

SUNDAY BRUNCH

Tilda®

Walk in the Park
Quilt Aqua



Walk in the Park Quilt

(Aqua colourway)

This gorgeous quilt would be ideal for a picnic in the park, basking in the sun under the bluest sky. It features a collection of charming picture motifs, including trees in full leaf, ornate gazebos and singing birds. The overall feel of the Sunday Brunch collection is restful but with flashes of fresh shades, with colours including teal, green, soft grey and blue, teamed with yellow, ginger, pink and sand. The quilt has mostly easy techniques but concentration is needed to achieve accurate results as there are many motifs and fabric pieces. This quilt has a bold aqua Chambray background, which is a lovely contrast to the prints. There is another quilt in this design with a putty white Chambray background, plus pillows in four different colourways – see tildasworld.com for the instructions.

Difficulty rating ***

Materials

- Fabric 1: 5¼yds (4.8m) – Chambray aqua (160032) (background)
- Fabric 2: about a 12in (30cm) square – White Flower teal (100581)
- Fabric 3: ¾yd (40cm) – Mille lime (100582)
- Fabric 4: ¼yd (25cm) – Pernille teal (100583)
- Fabric 5: about 12in x 4½in (30cm x 12cm) – Mia teal (100584)
- Fabric 6: ¼yd (25cm) – Sunday Brunch teal (100585)
- Fabric 7: about 12in x 4½in (30cm x 12cm) – Sunday Brunch grey (100586)
- Fabric 8: ½yd (15cm) – Mia sour yellow (100587)
- Fabric 9: a fat eighth or ¼yd (25cm) – Pernille yellow (100588)
- Fabric 10: about a 12in (30cm) square – Mille grey (100589)
- Fabric 11: about a 12in (30cm) square – White Flower sour yellow (100590)
- Fabric 12: about a 12in (30cm) square – White Flower pink (100591)
- Fabric 13: ¼yd (25cm) – Mille ginger (100592)
- Fabric 14: ¼yd (25cm) – Pernille pink (100593)
- Fabric 15: ½yd (15cm) – Mia pink (100594)
- Fabric 16: about 12in x 4½in (30cm x 12cm) – Sunday Brunch ginger (100595)
- Fabric 17: about 12in x 4½in (30cm x 12cm) – Sunday Brunch blue (100596)
- Fabric 18: about 12in x 4½in (30cm x 12cm) – Mia blue (100597)
- Fabric 19: about 12in x 4½in (30cm x 12cm) – Pernille sand (100598)
- Fabric 20: a fat eighth (*not* a long ½yd) – Mille sky (100599)
- Fabric 21: about 12in x 4½in (30cm x 12cm) – White Flower sand (100600)
- Fabric 22: ½yd (15cm) (* see Fabric Notes) – Topsy green (110114)
- Fabric 23: ½yd (15cm) * – Topsy teal (110115)
- Fabric 24: about a 12in (30cm) square – Topsy cream/blue (110116)
- Fabric 25: about a 12in (30cm) square – Topsy yellow (110117)
- Fabric 26: about a 6in (15cm) square – Topsy grey (110118)
- Fabric 27: ½yd (15cm) * – Topsy sour yellow (110119)
- Fabric 28: ½yd (15cm) – Topsy ginger (110120)
- Fabric 29: ½yd (15cm) – Topsy pink (110121)
- Fabric 30: about 12in x 4½in (30cm x 12cm) – Topsy cream/pink (110122)
- Fabric 31: ½yd (15cm) – Topsy blue (110123)
- Fabric 32: about a 12in (30cm) square – Topsy sky (110124)
- Fabric 33: ½yd (15cm) * – Topsy sand (110125)

- Fabric 34: ½yd (50cm) – Chambray moss (160034)
- Fabric 35: about a 6in (15cm) square – Chambray ginger (160041)
- Wadding (batting): 68in x 91in (173cm x 231cm)
- Backing fabric: 5yds (4.6m) – Sunday Brunch teal (100585)
- Binding fabric: ⅝yd (60cm) – Topsy sour yellow (110119)
- Piecing and quilting threads
- Quilter’s ruler, rotary cutter and mat

Fabric Notes

Where a long eighth or long quarter of a yard is given in the Materials list you could use a fat eighth or a fat quarter instead (unless otherwise stated). A fat eighth is assumed to be approximately 10½in x 18in (26.7cm x 45.7cm) and a fat quarter approximately 21in x 18in (53.3cm x 45.7cm). * If using a long ⅝yd (15cm), ensure that the cut is *at least* 4½in (12cm) deep.

Finished Size

59½in x 83in (151cm x 211cm)

General Notes

- Fabric quantities are based on a usable width of 42in (107cm), unless otherwise stated.
- Measurements are in imperial inches with metric conversions in brackets – use only *one* system throughout (preferably inches). Width measurements are generally given first.
- Before using your fabrics, press before cutting and trim as needed to square up the fabric pattern/weave, using a quilting ruler to cut the top raw edge at 90 degrees to the selvages.
- Use ¼in (6mm) seams unless otherwise instructed.
- Read all the instructions through before you start.
- Always make one complete block as a test before going on to make the remaining blocks.

Quilt Layout

1 The quilt is made up of twenty-six blocks, with six different picture motifs – Three Trees block, Gazebo block (in three different colourways), Garden Shed block (in two different colourways), Two Trees block, Grass block and Bird block. Two horizontal sashing pieces are added as fillers, with sashing used as a narrow border around the quilt. See **Fig A** for the fabrics used, **Fig B** for the quilt layout and **Fig C** for the block identifications.

Fig A Fabric swatches (Walk in the Park Quilt – Aqua)

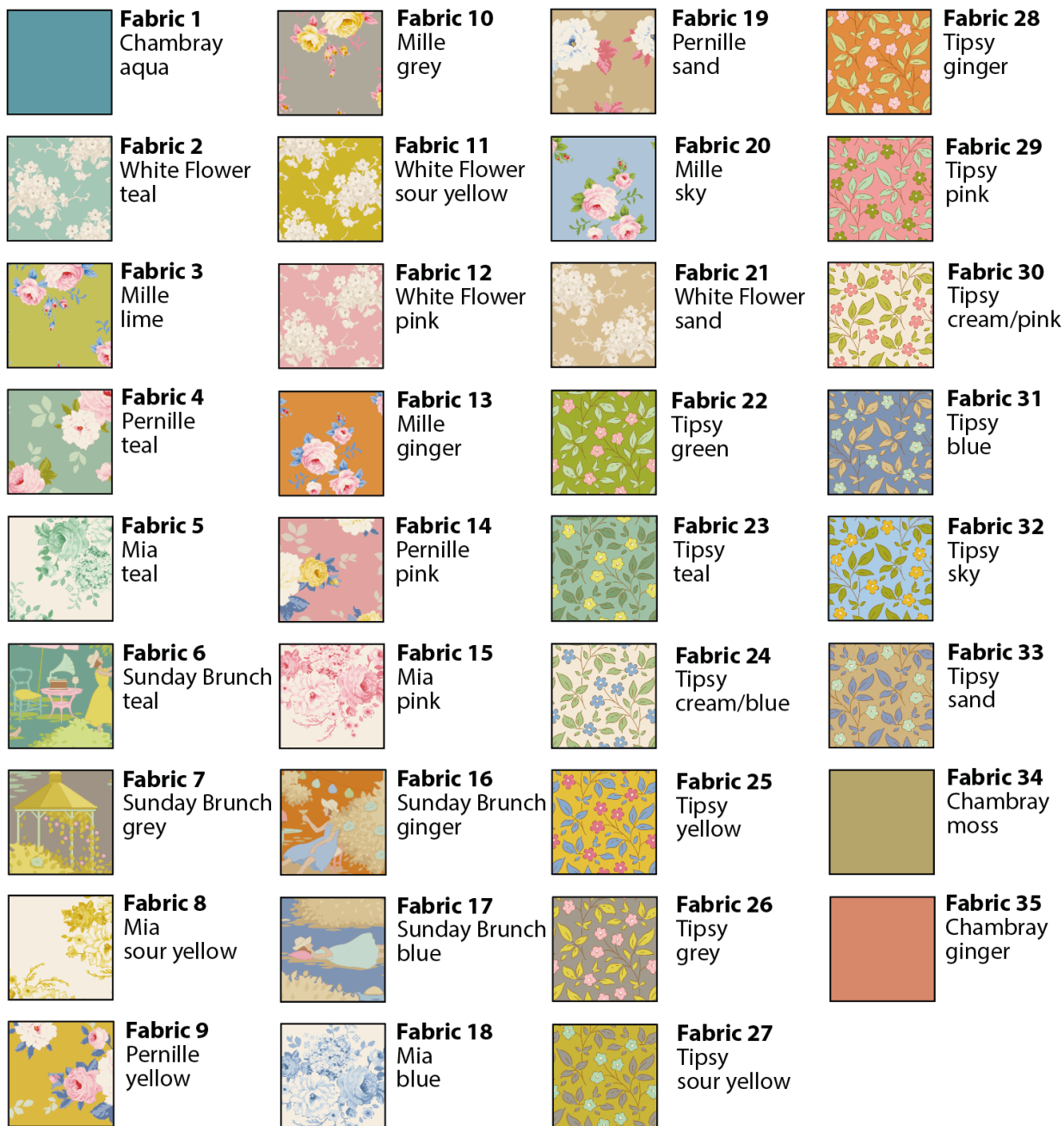


Fig B Quilt layout (Walk in the Park Quilt – Aqua)

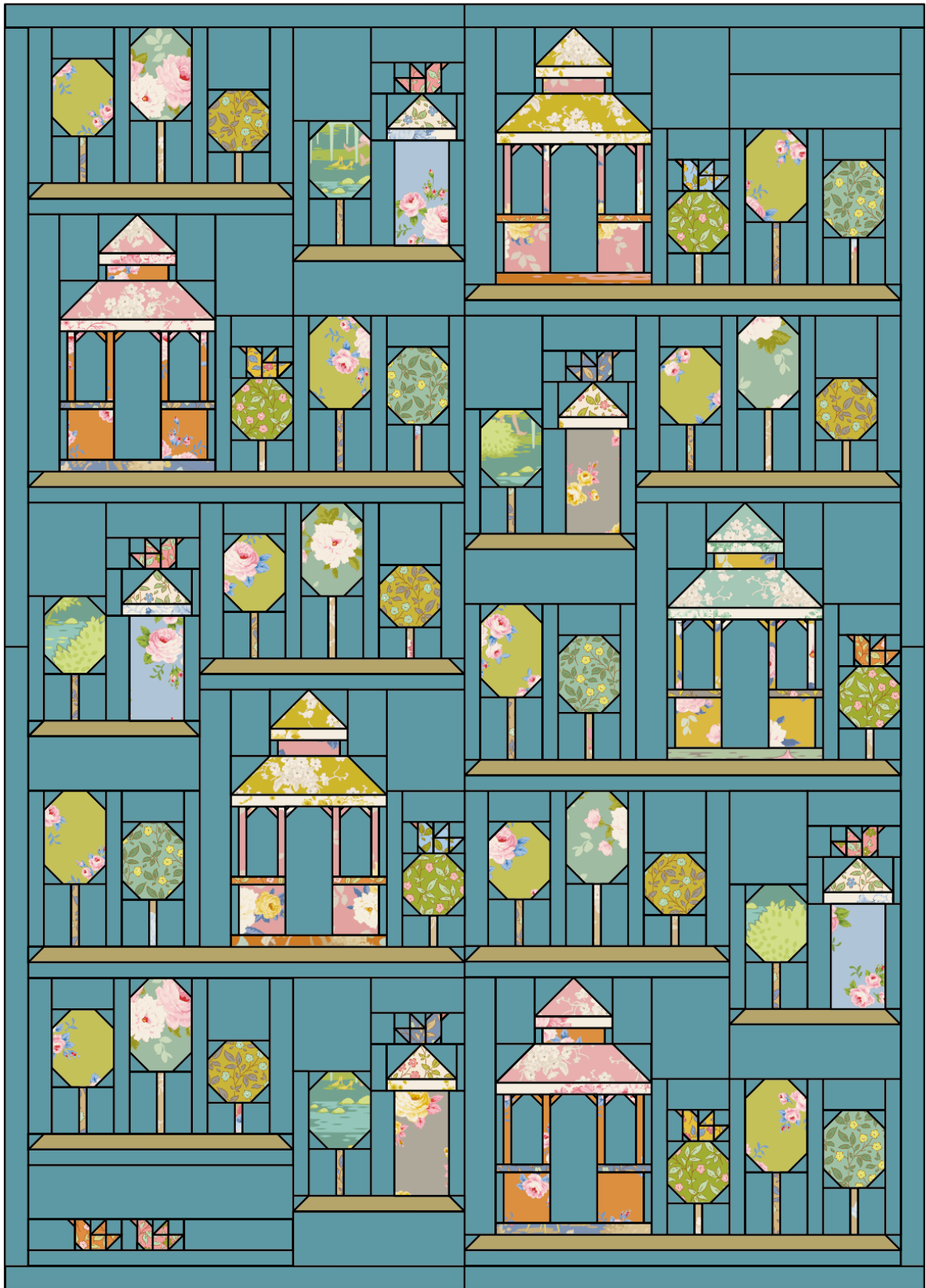
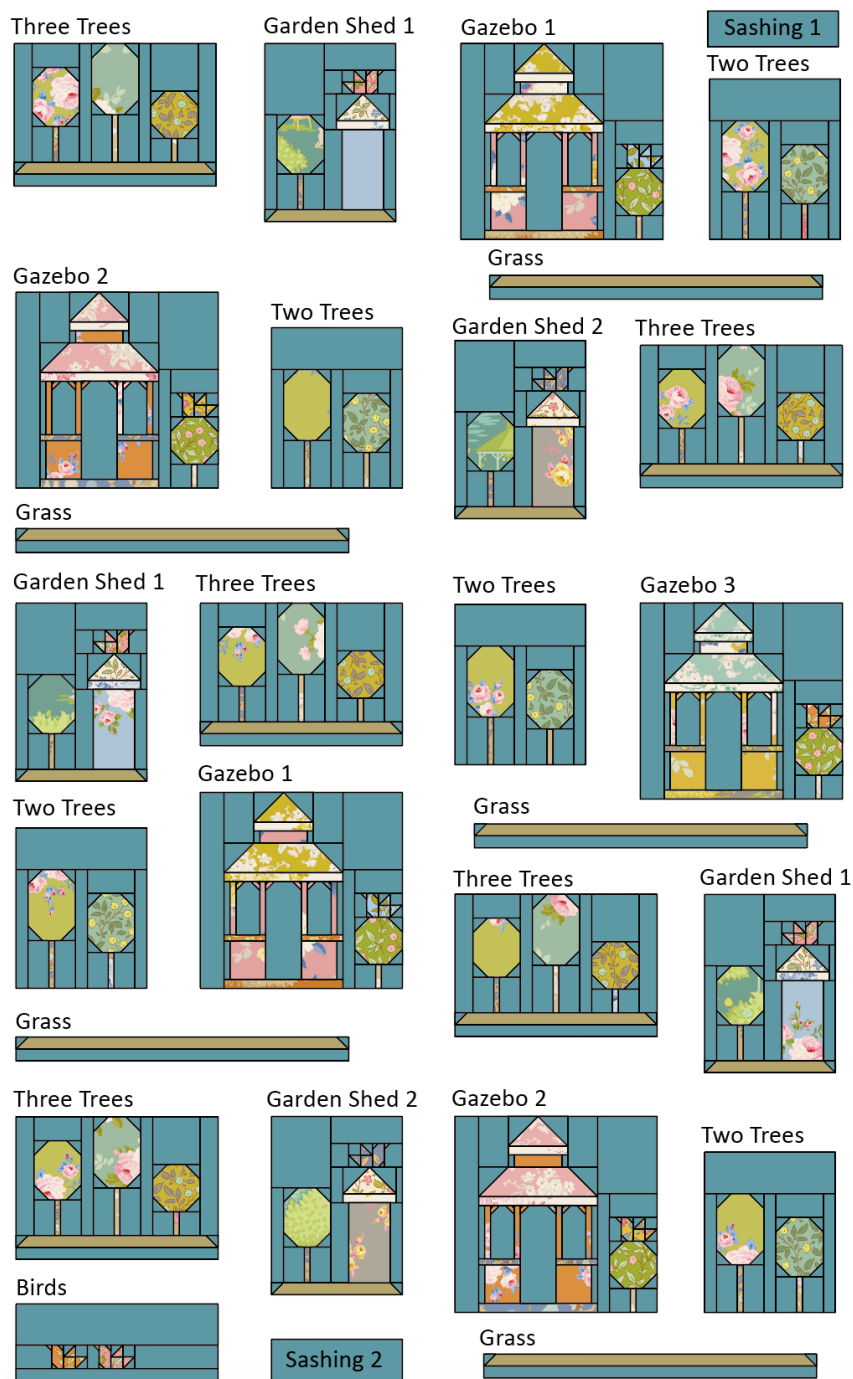


Fig C The quilt blocks



Cutting Out

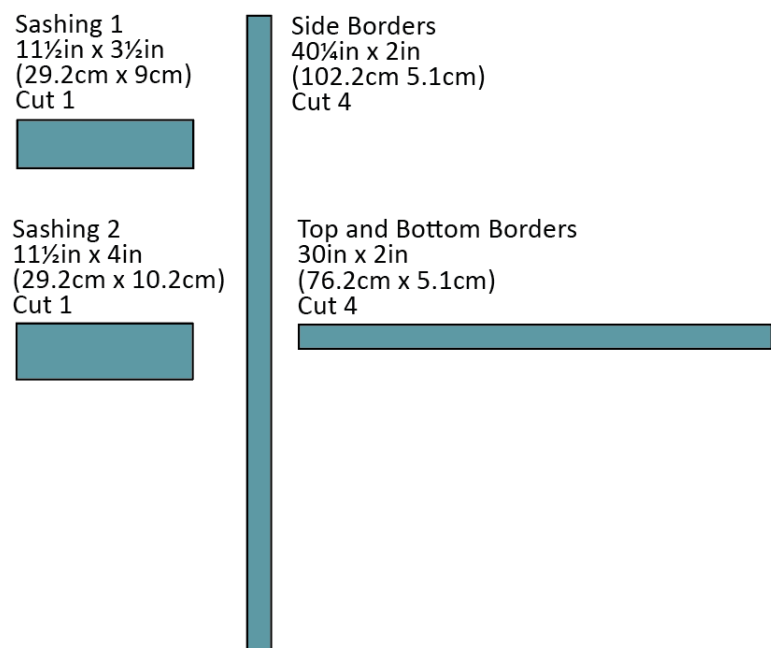
2 Start by cutting the sashing pieces for the quilt from the background fabric (Fabric 1) (see **Fig D**). The Chambray fabric can be cut in any direction, so cut the strips across the width of the fabric for ease of cutting.

- For Sashing 1, cut one piece 11½in x 3½in (29.2cm x 9cm).
- For Sashing 2, cut one piece 11½in x 4in (29.2cm x 10.2cm).
- For the sashing strips for the side border, cut four strips 40¼in x 2in (102.2cm x 5.1cm). Using ¼in (6mm) seams, sew together into two pairs to make two strips 80in (203.2cm) long. Press seams open.
- For the sashing strips for the top/bottom border, cut four strips 30in x 2in (76.2cm x 5.1cm). Using ¼in (6mm) seams, sew together into two pairs to make two strips 59½in (151cm) long. Press seams open.

Fig D

Cut measurements for the sashing and border pieces

Sizes include ¼ in (6mm) seam allowances



3 Cut the fabrics for the blocks following the measurements given in the following diagrams. Note that areas shown in white are the aqua background.

- Follow **Fig E** for the Three Trees block.
- Follow **Fig F** for the Gazebo block.
- Follow **Fig G** for the Garden Shed block.
- Follow **Fig H** for the Two Trees block.
- Follow **Fig I** for the Grass block.
- Follow **Fig J** for the Bird block.

For the fabric positions in the blocks, use **Fig K** for the Three Trees block and the three different Gazebo blocks. Use **Fig L** for the two different Garden Shed blocks and the Two Trees, Grass and Bird blocks.

4 Cut the backing fabric across the width into two pieces. Using a ¼in (6mm) seam, sew together along the long side and press the seam open. Trim to a piece about 68in x 91in (173cm x 231cm). This is about 4in (10.2cm) larger all round than the quilt top, to allow for quilting and finishing.

5 Cut the binding fabric into eight 2½in (6.4cm) x width of fabric strips. Sew the strips together end to end and press seams open. Press the binding in half along the length, wrong sides together.

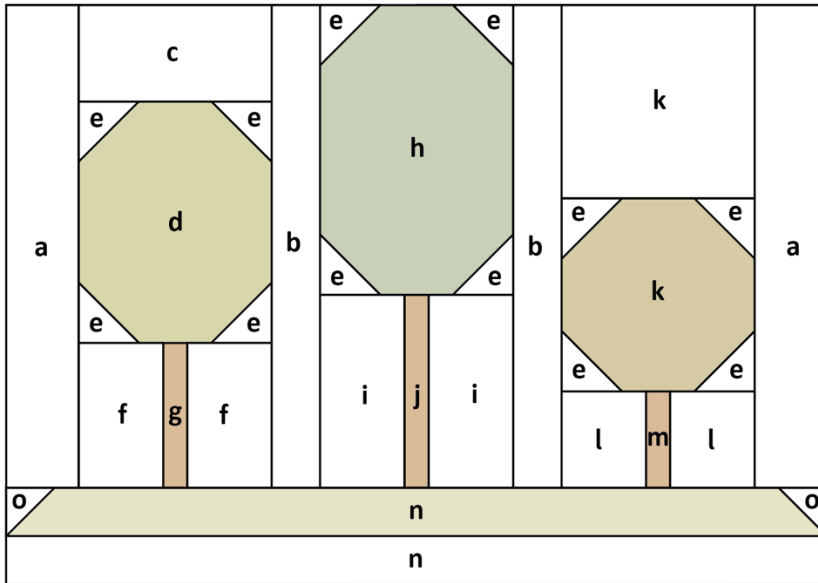
Fig E Cut measurements for a Three Trees Block

Sizes include 1/4in (6mm) seam allowances

All pieces to be cut initially as squares or rectangles

Three Trees Block

17 1/2in x 12 1/2in (44.5cm x 31.8cm) unfinished



- a 2in x 10 1/2in (5.1cm x 26.7cm)
- b 1 1/2in x 10 1/2in (3.8cm x 26.7cm)
- c 4 1/2in x 2 1/2in (11.4cm x 6.4cm)
- d 4 1/2in x 5 1/2in (11.4cm x 14cm)
- e 1 3/4in (4.4cm) square
- f 2 1/4in x 3 1/2in (5.7cm x 9cm)
- g 1in x 3 1/2in (2.5cm x 9cm)
- h 4 1/2in x 6 1/2in (11.4cm x 16.5cm)
- i 2 1/4in x 4 1/2in (5.7cm x 11.4cm)
- j 1in x 4 1/2in (2.5cm x 11.4cm)
- k 4 1/2in (11.4cm) square
- l 2 1/4in x 2 1/2in (5.7cm x 6.4cm)
- m 1in x 2 1/2in (2.5cm x 6.4cm)
- n 17 1/2in x 1 1/2in (44.5cm x 3.8cm)
- o 1 1/2in (3.8cm) square

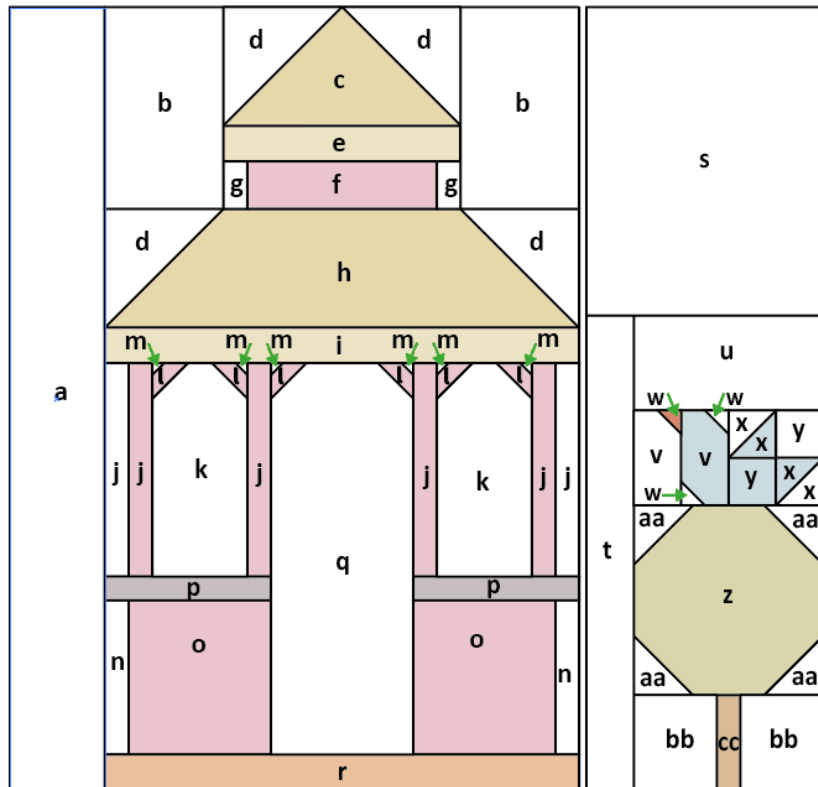
Fig F Cut measurements for a Gazebo Block

Sizes include 1/4in (6mm) seam allowances

All pieces to be cut initially as squares or rectangles

Gazebo Block

17 1/2in x 17in (44.5cm x 43.2cm) unfinished



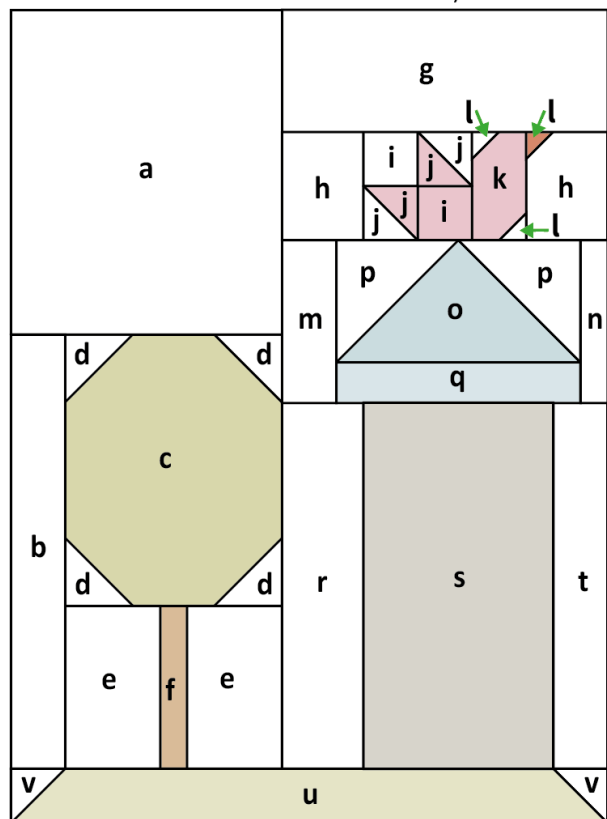
- a 2 1/2in x 17in (6.4cm x 43.2cm)
- b 3in x 4 3/4in (7.6cm x 12cm)
- c 5 1/2in x 3in (14cm x 7.6cm)
- d 3in (7.6cm) square
- e 5 1/2in x 1 1/4in (14cm x 3.2cm)
- f 4 1/2in x 1 1/4in (11.4cm x 3.8cm)
- g 1in x 1 1/2in (2.5cm x 3.8cm)
- h 10 1/2in x 3in (26.7cm x 7.6cm)
- i 10 1/2in x 1 1/4in (26.7cm x 3.2cm)
- j 1in x 5in (2.5cm x 12.7cm)
- k 2 1/2in x 5in (6.4cm x 12.7cm)
- l 1 1/4in (3.2cm) square
- m 3/4in (2cm) square
- n 1in x 3 1/4in (2.5cm x 9.5cm)
- o 3 1/2in x 3 1/2in (9cm x 9.5cm)
- p 4in x 1in (10.2cm x 2.5cm)
- q 3 1/2in x 8 3/4in (9cm x 22.2cm)
- r 10 1/2in x 1 1/4in (26.7cm x 3.2cm)
- s 5 1/2in x 7in (14cm x 17.8cm)
- t 1 1/2in x 10 1/2in (3.8cm x 26.7cm)
- u 4 1/2in x 2 1/2in (11.4cm x 6.4cm)
- v 1 1/2in x 2 1/2in (3.8cm x 6.4cm)
- w 1in (2.5cm) square
- x 1 1/2in (4.8cm) square, for 1 1/2in (3.8cm) unfinished half-square triangles
- y 1 1/2in (3.8cm) square
- z 4 1/2in (11.4cm) square
- aa 1 3/4in (4.4cm) square
- bb 2 1/2in x 2 1/2in (5.7cm x 6.4cm)
- cc 1in x 2 1/2in (2.5cm x 6.4cm)

Fig G Cut measurements for a Garden Shed Block

Sizes include 1/4in (6mm) seam allowances. All pieces to be cut initially as squares or rectangles

Garden Shed Block

11 1/2in x 15 1/2in (29.2cm x 39.4cm) unfinished



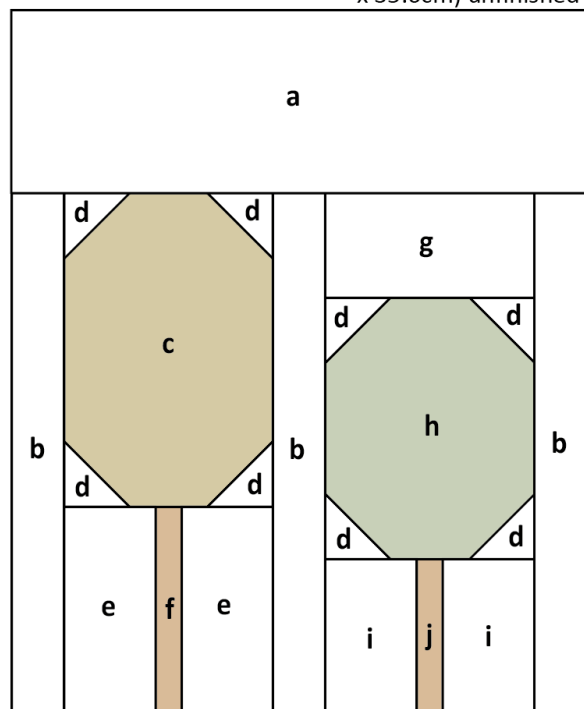
- a 5 1/2in x 6 1/2in (14cm x 16.5cm)
- b 1 1/2in x 8 1/2in (3.8cm x 21.6cm)
- c 4 1/2in x 5 1/2in (11.4cm x 14cm)
- d 1 3/4in (4.4cm) square
- e 2 1/4in x 3 1/2in (5.7cm x 9cm)
- f 1in x 3 1/2in (2.5cm x 9cm)
- g 6 1/2in x 2 3/4in (16.5cm x 7cm)
- h 2in x 2 1/2in (5.1cm x 6.4cm)
- i 1 1/2in (3.8cm) square
- j 1 1/2in (4.8cm) square, for 1 1/2in (3.8cm) unfinished half-square triangles
- k 1 1/2in x 2 1/2in (3.8cm x 6.4cm)
- l 1in (2.5cm) square
- m 1 1/2in x 3 1/2in (3.8cm x 9cm)
- n 1in x 3 1/2in (2.5cm x 9cm)
- o 5in x 2 3/4in (12.7cm x 7cm)
- p 2 3/4in (7cm) square
- q 5in x 1 1/4in (12.7cm x 3.2cm)
- r 2in x 7 1/4in (5.1cm x 18.4cm)
- s 4in x 7 1/4in (10.2cm x 18.4cm)
- t 1 1/2in x 7 1/4in (3.8cm x 18.4cm)
- u 11 1/2in x 1 1/2in (29.2cm x 3.8cm)
- v 1 1/2in (3.8cm) square

Fig H Cut measurements for a Two Trees Block

Sizes include 1/4in (6mm) seam allowances. All pieces to be cut initially as squares or rectangles

Two Trees Block

11 1/2in x 14in (29.2cm x 35.6cm) unfinished

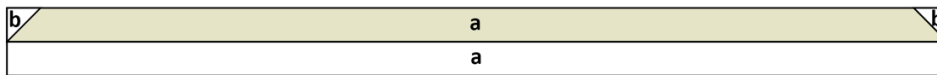


- a 11 1/2in x 4in (29.2cm x 10.2cm)
- b 1 1/2in x 10 1/2in (3.8cm x 26.7cm)
- c 4 1/2in x 6 1/2in (11.4cm x 16.5cm)
- d 1 3/4in (4.4cm) square
- e 2 1/4in x 4 1/2in (5.7cm x 11.4cm)
- f 1in x 4 1/2in (2.5cm x 11.4cm)
- g 4 1/2in x 2 1/2in (11.4cm x 6.4cm)
- h 4 1/2in x 5 1/2in (11.4cm x 14cm)
- i 2 1/4in x 3 1/2in (5.7cm x 9cm)
- j 1in x 3 1/2in (2.5cm x 9cm)

Fig I Cut measurements for a Grass Block

Sizes include 1/4in (6mm) seam allowances. All pieces to be cut initially as squares or rectangles

Grass Block 28 1/2in x 2 1/2in (72.4cm x 6.4cm) unfinished

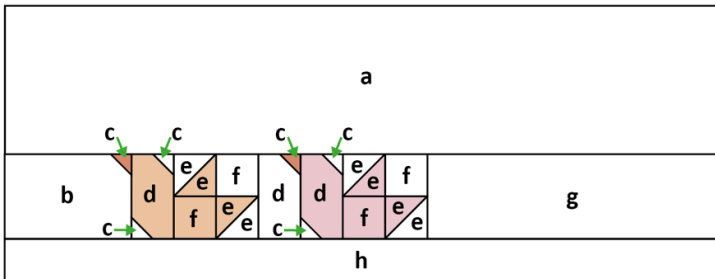


a 28 1/2in x 1 1/2in (72.4cm x 3.8cm) **b** 1 1/2in (3.8cm) square

Fig J Cut measurements for a Bird Block

Sizes include 1/4in (6mm) seam allowances. All pieces to be cut initially as squares or rectangles

Bird Block 17 1/2in x 7in (44.5cm x 17.8cm) unfinished



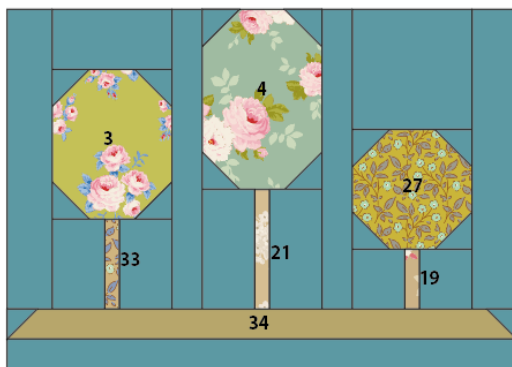
- a** 17 1/2in x 4in (44.5cm x 10.2cm)
- b** 3 1/2in x 2 1/2in (9cm x 6.4cm)
- c** 1in (2.5cm) square
- d** 1 1/2in x 2 1/2in (3.8cm x 6.4cm)
- e** 1 1/2in (4.8cm) square, for 1 1/2in (3.8cm) unfinished half-square triangles
- f** 1 1/2in (3.8cm) square
- g** 7 1/2in x 2 1/2in (19cm x 6.4cm)
- h** 17 1/2in x 1 1/2in (44.5cm x 3.8cm)

Fig K Block colourways for the Three Trees and Gazebo Blocks

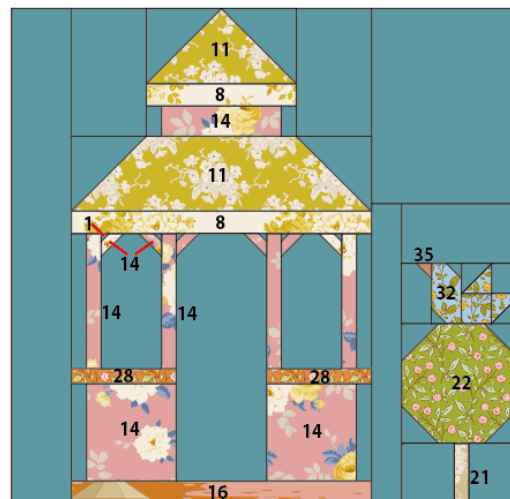
Bold numbers indicate fabrics to use (see Fig A). All background is Fabric 1.

Make the number of blocks indicated. Note the gazebo block is made in three different colourways

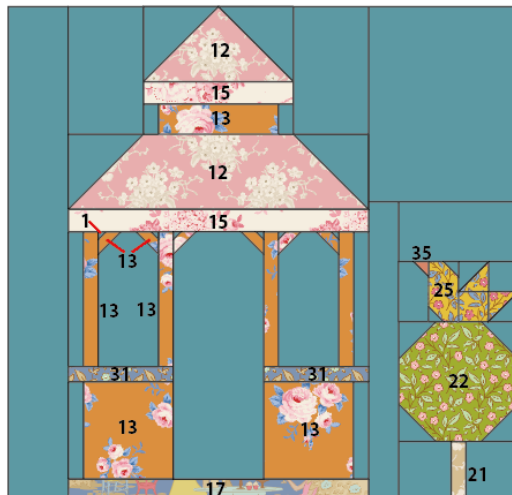
Three Trees Block – make 5



Gazebo Block 1 – make 2



Gazebo Block 2 – make 2



Gazebo Block 3 – make 1

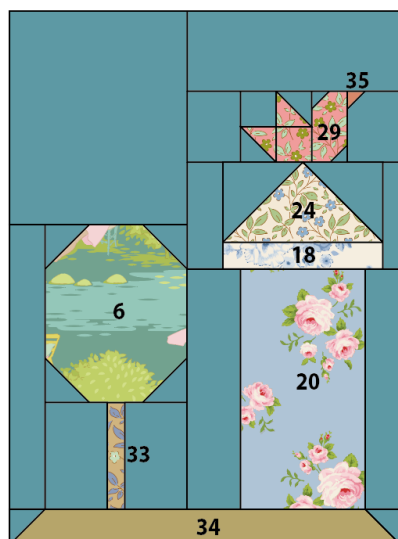


Fig L Block colourways for the Garden Shed, Two Trees, Bird and Grass Blocks

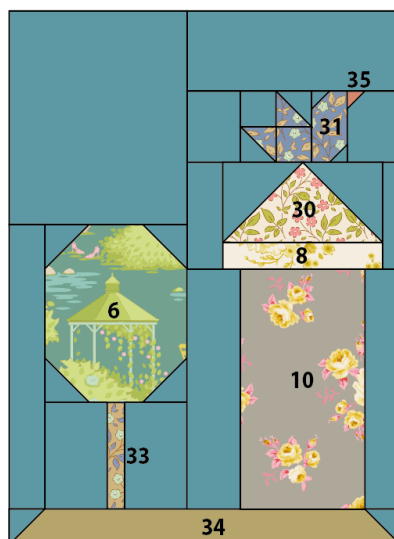
Bold numbers indicate fabrics to use (see Fig A). All background is Fabric 1.

Make the number of blocks indicated. Note the garden shed block is made in two different colourways

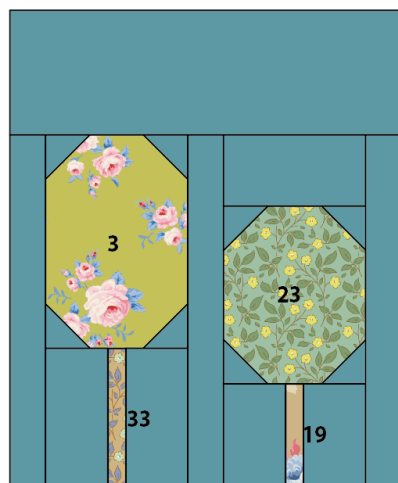
Garden Shed Block 1 – make 3



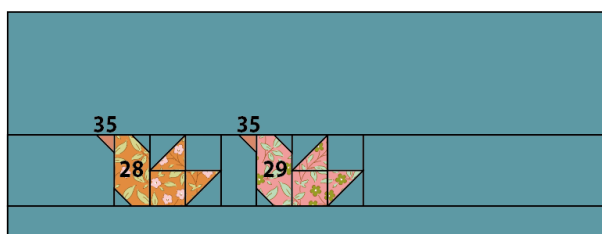
Garden Shed Block 2 – make 2



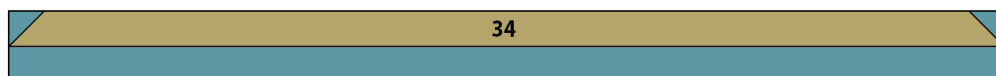
Two Trees Block – make 5



Bird Block – make 1



Grass Block – make 5



Making the Blocks

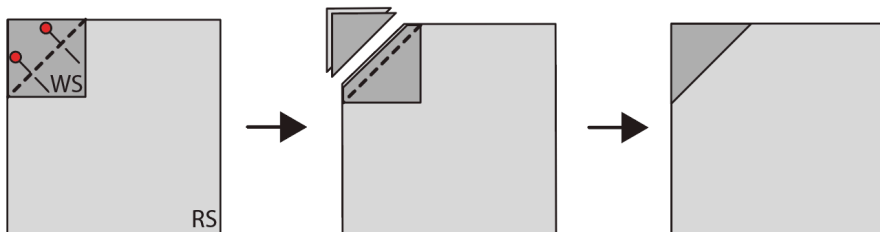
6 The blocks use two main techniques – corner triangle units and half-square triangle (HST) units. We will describe these techniques here, so refer back if needed when sewing the blocks.

7 Making corner triangle units: All of the blocks have areas where a triangle shape is needed to create more realistically shaped motifs and the basic process for creating these is shown in **Fig M 1**. Take the larger piece of fabric and place it right side (RS) up. On the smaller square, pencil mark the diagonal line on the wrong side. Pin the square right sides together with the larger fabric, aligning the edges as shown and with the diagonal line in the direction needed. Sew along the marked line. Trim off excess fabric $\frac{1}{4}$ in (6mm) outside the sewn line and press the triangle outwards. Check the unit is the size it is supposed to be (this will be the same size as the initial larger piece of fabric).

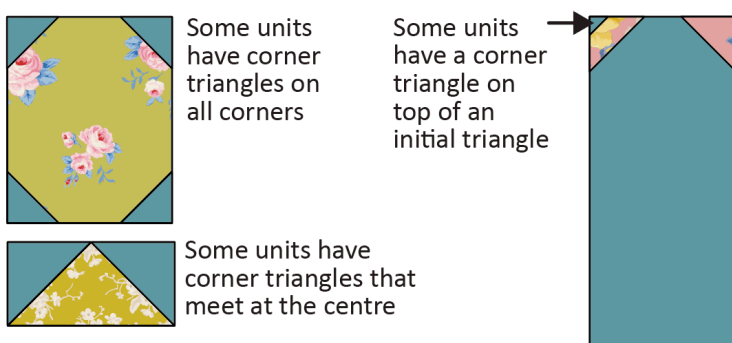
Fig M 2 indicates that units needing corner triangles can vary – some have triangles on each corner, some have triangles that meet in the centre and the gazebo block has a tiny triangle created on top of an initial triangle.

Fig M Making a corner triangle unit

1 Basic process

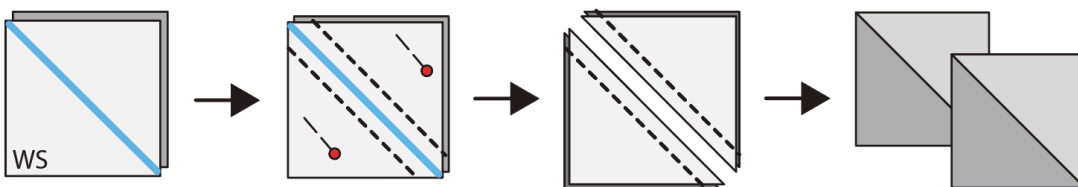


2 Variations



8 Making half-square triangle (HST) units: The small birds in the Gazebo, Garden Shed and Bird blocks use HSTs in their construction. The method described here makes two units at the same time. The process is shown in **Fig N**. Take two different squares and on the wrong side of the lighter square, pencil mark the diagonal line. Place the two squares right sides (RS) together and sew $\frac{1}{4}$ in (6mm) away from the marked line on both sides, as shown. Cut the units apart along the marked line and press the units. The seam is normally pressed towards the darker fabric. Check each unit is the size it is meant to be – for this quilt the HSTs should be $1\frac{1}{2}$ in (3.8cm) square (unfinished).

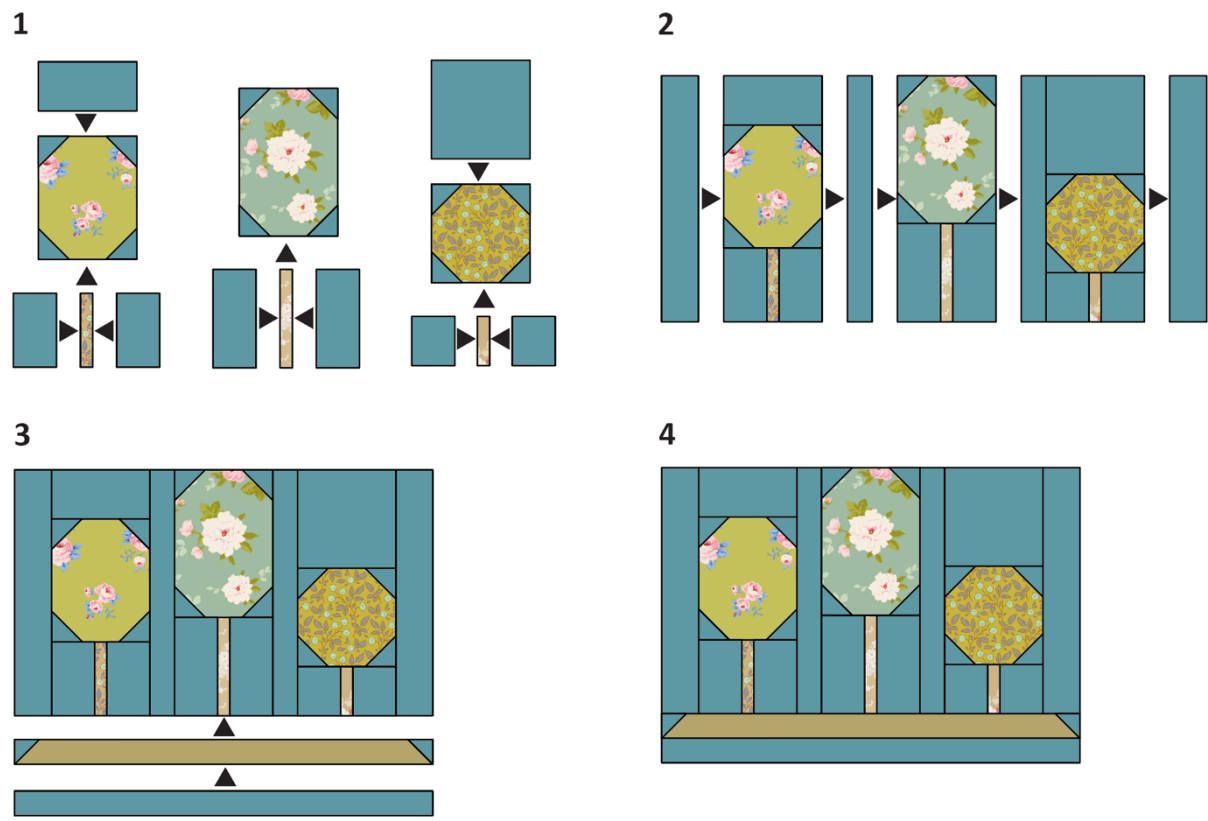
Fig N Making half-square triangle units



Making a Three Trees Block

9 The stages of making a Three Trees block are shown in **Fig O**. Prepare all of the units needing corner triangles first, referring back to Step 7 if needed. Lay out all the pieces for a block in roughly the shape of the block and then begin sewing them together. Use $\frac{1}{4}$ in (6mm) seams and press seams open or to one side. If a seam is only sewn for a short distance, reduce the stitch length on your machine, to better secure the seam. Once sewn, check the block is the size it is meant to be (given in **Fig E**).

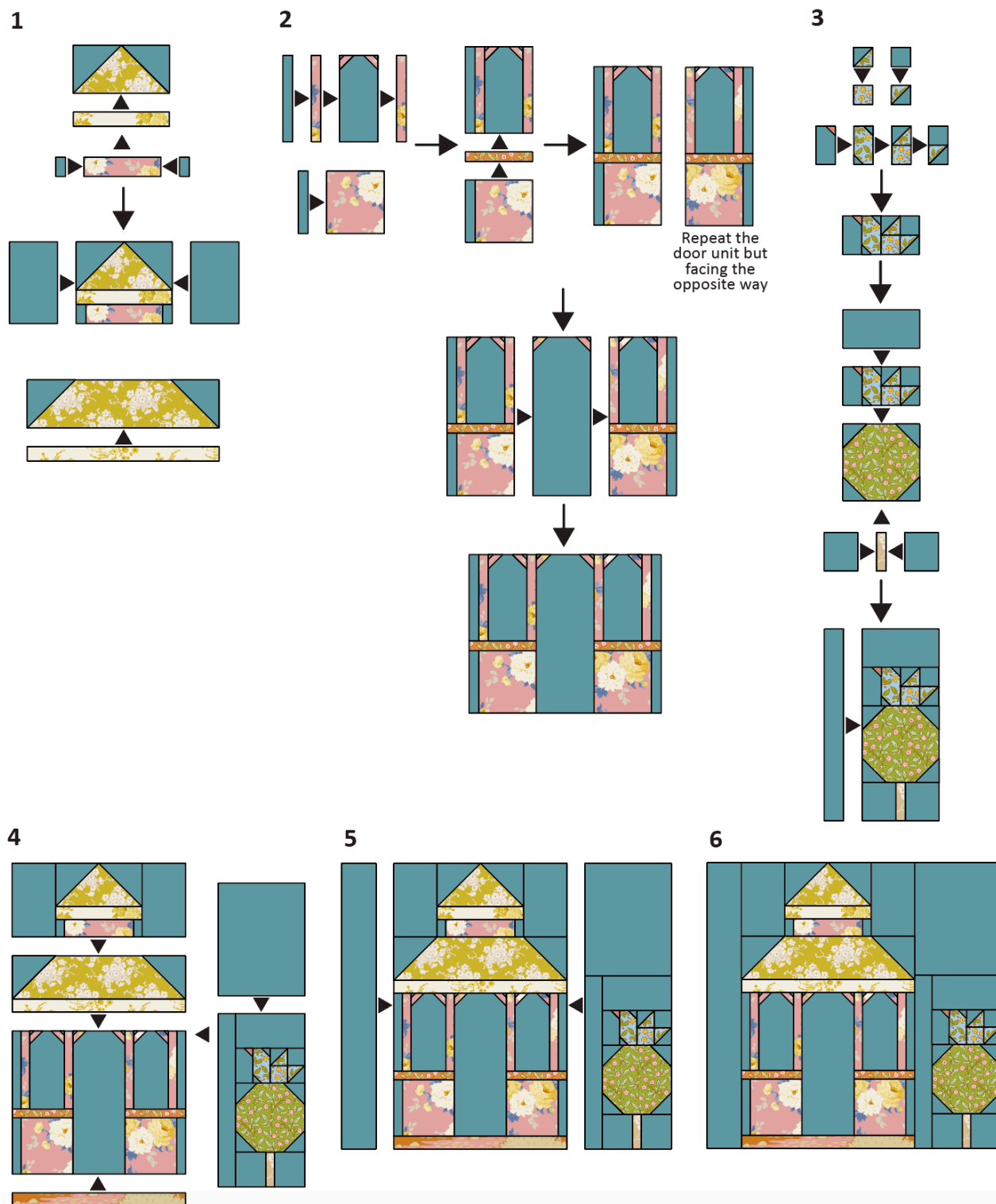
Fig O Making a Three Trees block



Making a Gazebo Block

10 The stages of making a Gazebo block are shown in **Fig P**. This block is the most complicated one, with lots of pieces, so take your time to sew accurately. Prepare all of the units needing corner triangles first. Lay out all the pieces in roughly the shape of the block and then begin sewing them together. Use $\frac{1}{4}$ in (6mm) seams and press seams open or to one side. If a seam is only sewn for a short distance, reduce the stitch length on your machine. Once sewn, check the block is the size it is meant to be (given in **Fig F**). Make the other Gazebo blocks in the same way, referring to **Fig K** for the colours.

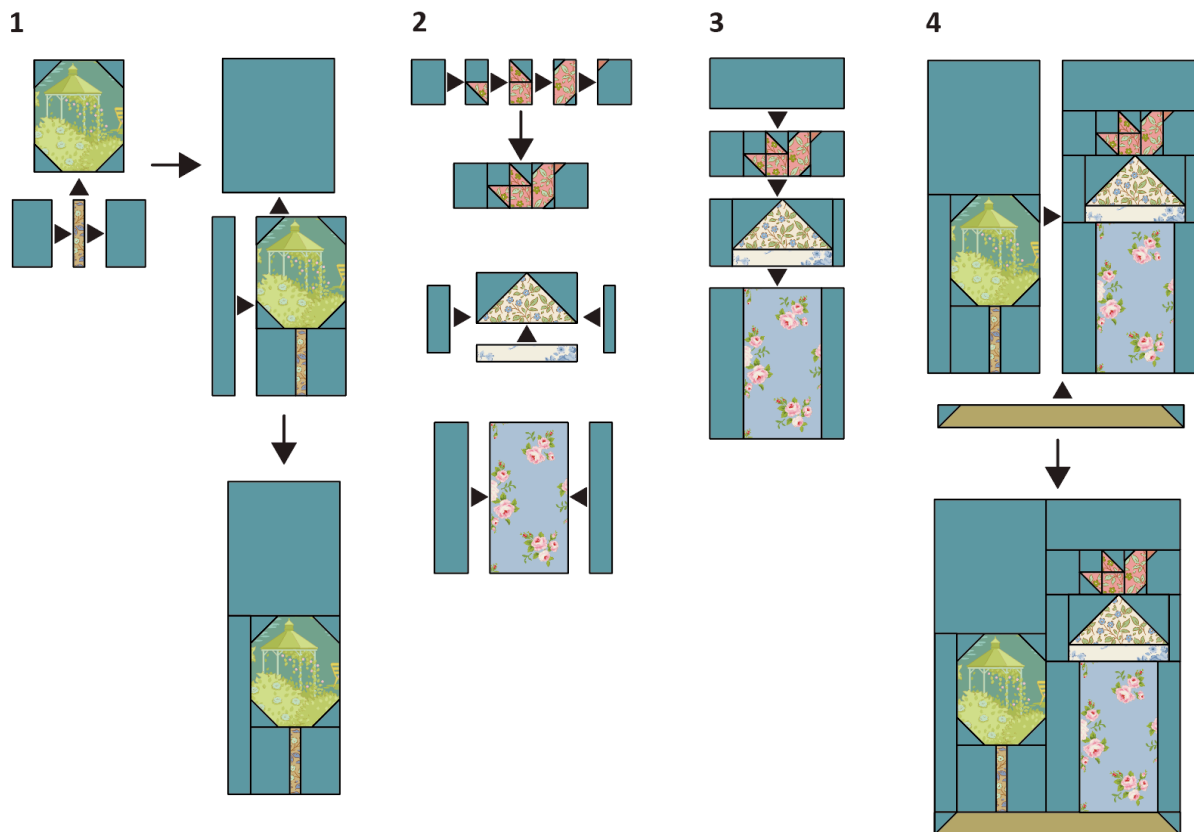
Fig P Making a Gazebo block
Gazebo 1 shown



Making a Garden Shed Block

11 The stages of making a Garden Shed block are shown in **Fig Q**. Prepare all of the units needing corner triangles first. Lay out all the pieces in roughly the shape of the block and then begin sewing them together. Use $\frac{1}{4}$ in (6mm) seams and press seams open or to one side. If a seam is only sewn for a short distance, reduce the stitch length on your machine. Once sewn, check the block is the size it is meant to be (given in **Fig G**). Make the other Garden Shed block in the same way, referring to **Fig L** for the colours.

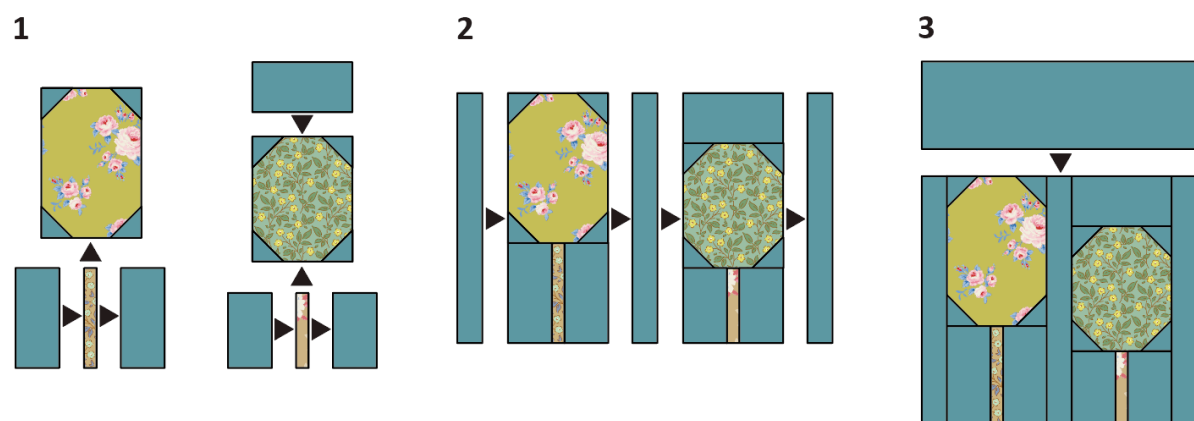
Fig Q Making a Garden Shed block
Garden Shed 1 shown



Making a Two Trees Block

12 The stages of making a Two Trees block are shown in **Fig R**. Prepare all of the units needing corner triangles first. Lay out all the pieces in roughly the shape of the block and then begin sewing them together. Use $\frac{1}{4}$ in (6mm) seams and press seams open or to one side. If a seam is only sewn for a short distance, reduce the stitch length on your machine. Once sewn, check the block is the size it is meant to be (given in **Fig H**).

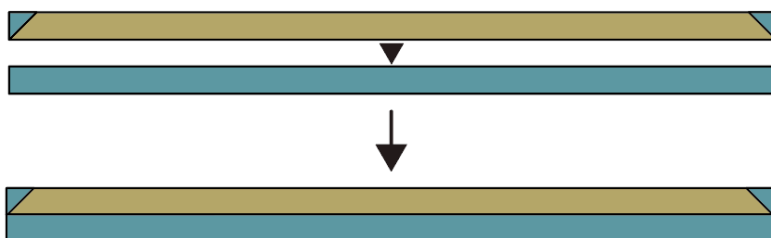
Fig R Making a Two Trees block



Making a Grass Block

13 A Grass block is easy and shown in **Fig S**. Prepare the corner triangles first. Lay out the two strips as shown and sew them together. Press the seam open. Once sewn, check the block is the size it is meant to be (given in **Fig I**).

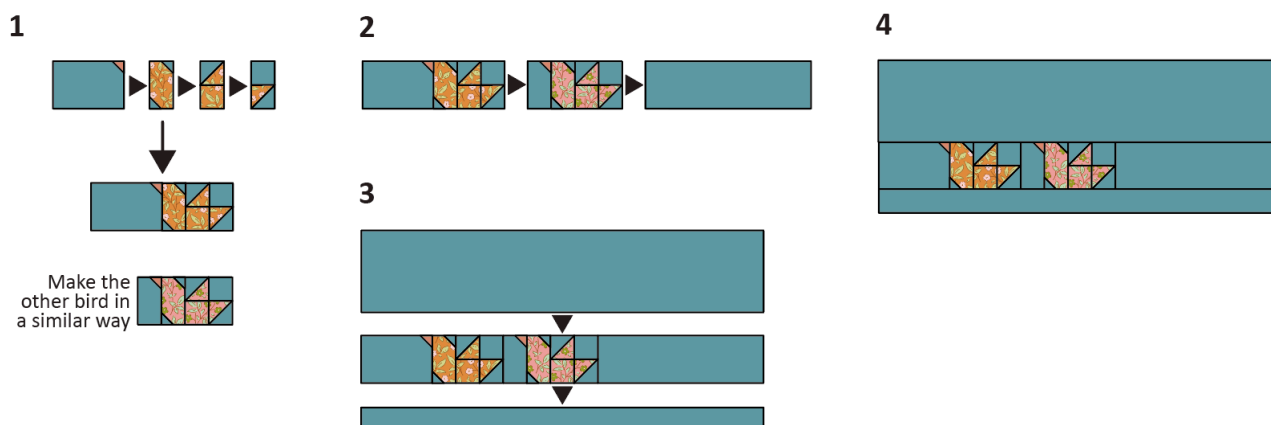
Fig S Making a Grass block



Making a Bird Block

14 The stages of making a Bird block are shown in **Fig T**. The birds are identical except made with different prints. Their assembly is similar to the bird in the Gazebo block. Prepare all of the units needing corner triangles first. Make the HST units. Lay out all the pieces in roughly the shape of the block and then begin sewing them together. Use ¼in (6mm) seams and press seams open or to one side. If a seam is only sewn for a short distance, reduce the stitch length on your machine. Once sewn, check the block is the size it is meant to be (given in **Fig J**).

Fig T Making a Bird block



Assembling the Quilt

15 When all of the blocks have been made, start assembling the quilt by sewing the blocks into small sections, as shown in **Fig U**. Press seams open or downwards. Generally, the quilt layout follows a vertical column format. To ensure that you are placing the blocks in the correct positions, refer also to **Fig C**, which identifies the blocks and their positions, showing the quilt layout in an expanded view.

16 Now sew the sub-sections together as shown in **Fig V**. You will see that the Grass blocks can be added at this stage. The larger sub-sections will now start to form two columns. Sew each column together, as in **Fig W**. Now sew the two columns together – there will be some seams to match up, so sew these neatly (**Fig X**). Check the quilt's size at this stage, which should be 56½in x 80in (143.5cm x 203.2cm). Now add the side border strips, pressing seams outwards. Finally, add the top and bottom borders and press. Your quilt top is now finished.

Fig U Assembling the blocks into sections

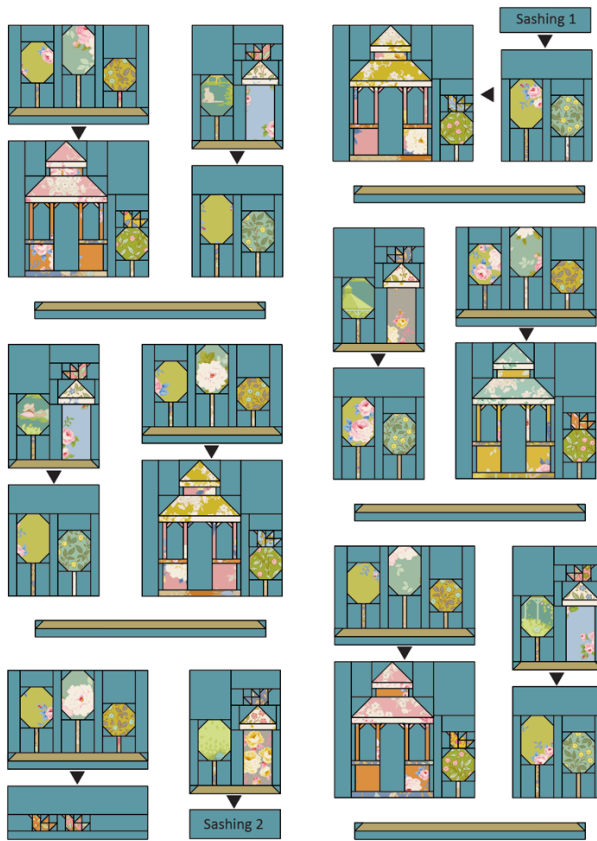


Fig V Starting to sew sections together

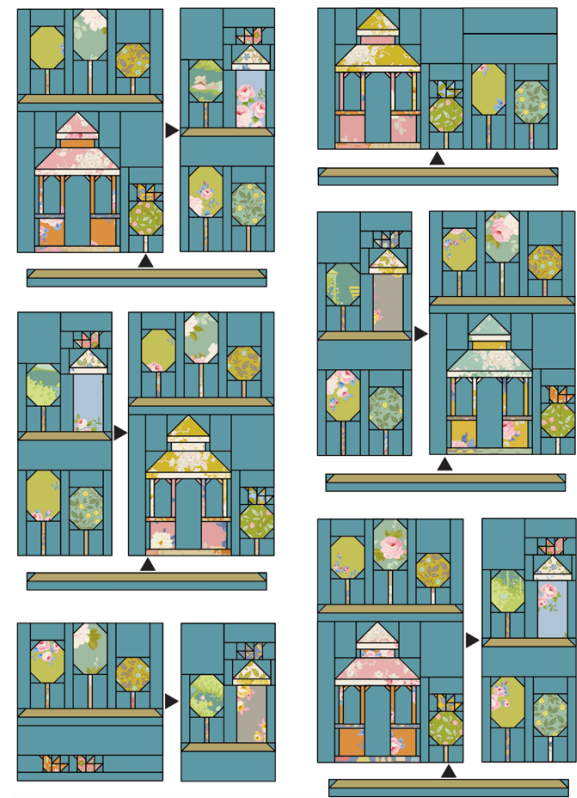


Fig W Sewing the larger sections together into two columns

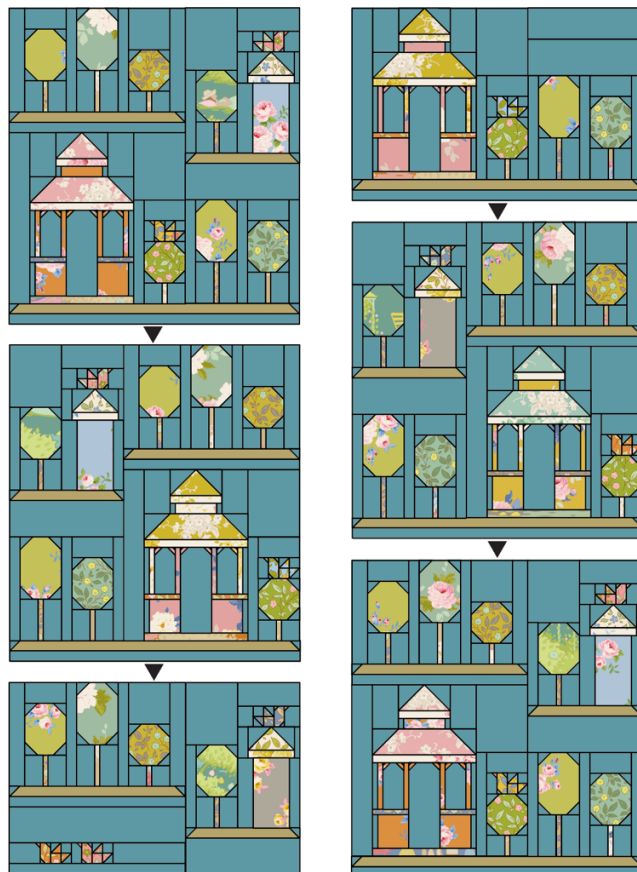
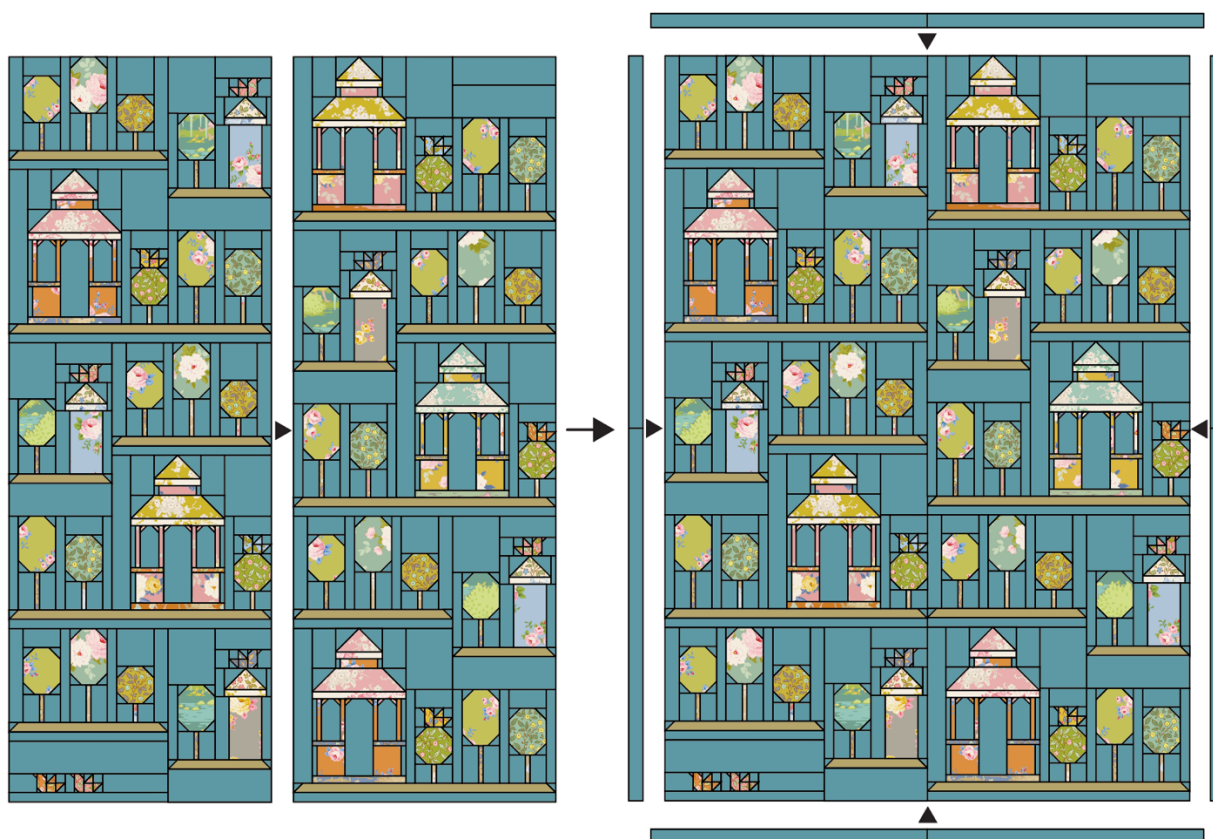


Fig X Finishing the assembly



Quilting and Finishing

17 If you are quilting the quilt yourself you now need to make a quilt sandwich – you can do this in various ways, as follows.

- Use large stitches to tack a grid through the layers of the quilt in both directions, with lines about 4in (10cm) apart.
- Use pins or safety pins to fix the layers together.
- Use fabric glue, sprayed onto the wadding to fix the layers together.

If you are sending the quilt off to be commercially long-arm quilted you won't need to make a sandwich, as this is done when the quilt is mounted on the machine. When the layers of the quilt are secured you can quilt as desired.

18 Use the prepared double-fold binding strip to bind your quilt. Sew the binding to the quilt by pinning the raw edge of the folded binding against the raw edge of the quilt. Don't start at a corner. Using a $\frac{1}{4}$ in (6mm) seam, sew the binding in place, starting at least 6in (15.2cm) away from the end of the binding. Sew to within a $\frac{1}{4}$ in (6mm) of a corner and stop. Take the quilt off the machine and fold the binding upwards, creating a mitred corner. Hold this in place, fold the binding back down and pin it in place. Begin sewing the $\frac{1}{4}$ in (6mm) seam again from the top of the folded binding to within $\frac{1}{4}$ in (6mm) of the next corner and then repeat the folding process. Do this on all corners. Leave a 6in (15.2cm) 'tail' of unsewn binding at the end.

19 To join the two ends of the binding, open up the beginning and end of the binding tails, lay them flat and fold the ends back so the two ends touch. Mark these folds by creasing or with pins – this is where your seam needs to be. Open out the binding and sew the pieces

together at these creases. Trim off excess fabric and press the seam. Re-fold the binding and finish stitching it in place on the front of the quilt.

20 With the quilt right side up, use a medium-hot iron to press the binding outwards all round. Now begin to turn the binding over to the back of the quilt, pinning it in place. Use matching sewing thread and tiny stitches to slipstitch the binding in place all round, creating neat mitres at each corner. Press the binding and your lovely quilt is finished.