



Tilda®

Creating Memories
WINTER

Winter Pillows

Winter Pillow

(Red Colourway)

Two pillows have been designed to be perfect companions to the Christmas Calendar Quilt. Each pillow features three of the festive motifs from the quilt. This pillow has a red Chambray background and there is a second pillow with a brown background (see page 11). Tilda buttons have been used as a decorative and functional feature on the pillow and can be used to hang little surprise gifts.

Difficulty Rating **

Materials

- Fabric 1: ½yd (50cm) – Chambray red (160001) (background)
- Fabric 2: about 9in (23cm) square – Solid dove white (120001)
- Fabric 3: 4in x 2¼in (10.2cm x 5.7cm) – Evie green (130145)
- Fabric 4: about 6in (15cm) square – Berrytangle burgundy (130147)
- Fabric 5: 1in x 2¾in (2.5cm x 7cm) – Lulu sand (130148)
- Fabric 6: about 9in (23cm) square – Frida red (130150)
- Fabric 7: 7½in x 4in (19cm x 10.2cm) – Gracie green (130151)
- Fabric 8: 2½in x 5in (6.4cm x 12.7cm) – Tiny Dot red (160081)
- Fabric 9: 5½in x 3in (14cm x 7.6cm) – Stripe green (160082)
- Fabric 10: 1½in (3.8cm) square – Seamstripe red (160083)
- Fabric 11: about 12in (30cm) square – Polka Dot red (160085)
- Fabric 12: about 6in (15cm) square – Gingham red (160087)
- Wadding (batting): 31in x 18in (79cm x 46cm)
- Lining fabric: 31in x 18in (79cm x 46cm) (optional)
- Fabric for back of pillow: ⅝yd (60cm) – Plaid burgundy (160086)
- Binding fabric: ¼yd (25cm) – Plaid burgundy (160086)
- Piecing and quilting threads
- Black and ginger stranded cottons (floss) for eye and nose embroidery
- Quilter's ruler, rotary cutter and mat
- Pack of Creating Memories Buttons in Christmas Reds and Greens 10mm and 12mm (400065)
- Pillow pad to fit cover

Finished Size

28½in x 15½in (72.4cm x 39.4cm)

Fabric Notes

For some of the fabrics only a single piece is required, so the exact cutting size is given in the Materials list.

General Notes

- Fabric quantities are based on a usable width of 42in (107cm), unless otherwise stated.
- Measurements are in imperial inches with metric conversions in brackets – use only *one* system throughout (preferably inches). Width measurements are generally given first.
- Press fabric before cutting and trim as needed to square up the fabric pattern/weave, using a quilting ruler to cut the top raw edge at 90 degrees to the selvages.
- Use ¼in (6mm) seams unless otherwise instructed.
- Read all the instructions through before you start.

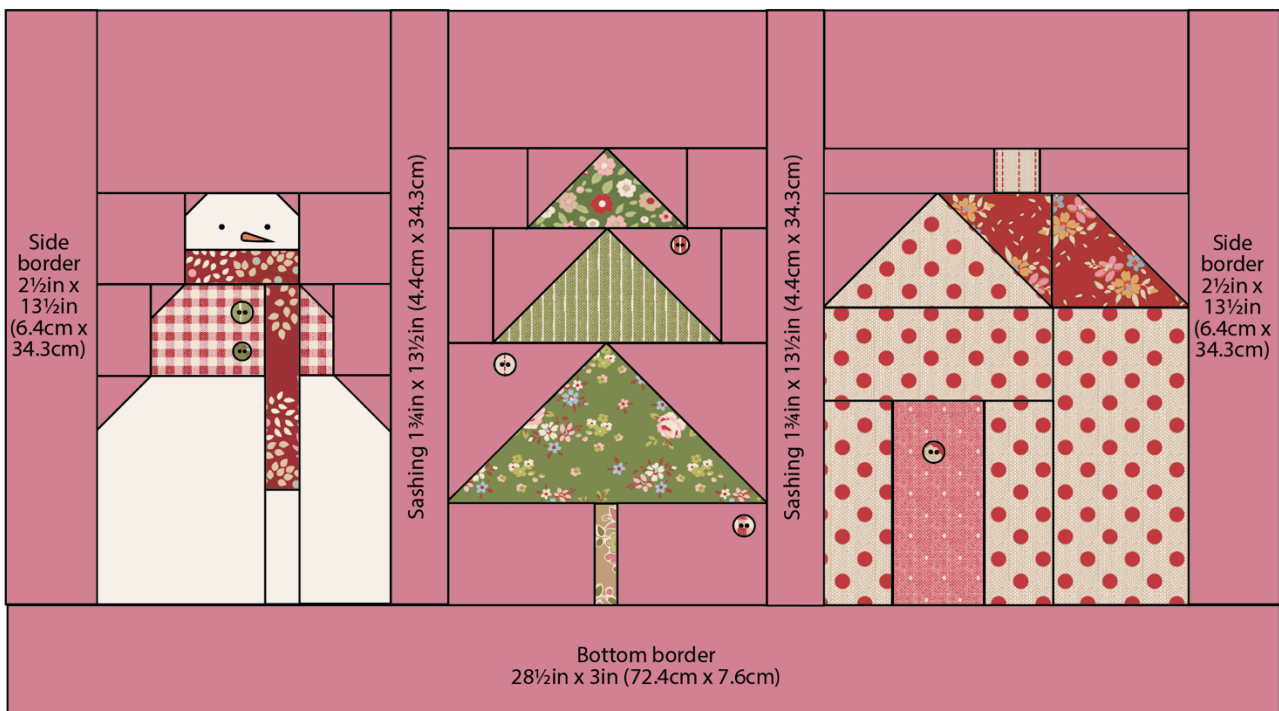
Pillow Layout

1 The pillow is made up of three different blocks, separated by strips of vertical sashing. There is a border at each side and at the bottom of the pillow. See **Fig A** for the fabrics used and **Fig B** for the pillow layout.

Fig A Fabric swatches (Winter Pillow – Red)



Fig B Pillow layout (Winter Pillow – Red)



Cutting Out

2 From Fabric 1 cut the sashing and border pieces first, cutting the following pieces (see **Fig B**).

- Sashing – two strips $1\frac{3}{4}\text{in} \times 13\frac{1}{2}\text{in}$ (4.4cm x 34.3cm).
- Side borders – two strips $2\frac{1}{2}\text{in} \times 13\frac{1}{2}\text{in}$ (6.4cm x 34.3cm).
- Lower border – one strip $28\frac{1}{2}\text{in} \times 3\text{in}$ (72.4cm x 7.6cm).

3 Each of the three blocks has a diagram giving the cut measurements, as well as the positions of the exact fabrics to use, so follow the diagrams carefully to cut the fabrics. Seam allowances of $\frac{1}{4}$ in (6mm) are included. (For some of the fabrics only a single piece is required, so the exact cutting size is also given in the Materials list.)

- **Fig C** for the Snowman block.
- **Fig D** for the Christmas Tree block.
- **Fig E** for the Gingerbread House block.

4 From the fabric for the back of the pillow, cut two pieces each about 29in x 11in (73.7cm x 28cm).

5 Cut the binding fabric into three $2\frac{1}{2}$ in (6.4cm) x width of fabric strips. Sew the strips together end to end and press seams open. Press the binding in half along the length, wrong sides together.

Fig C Cut measurements for the fabrics in a Snowman Block

Sizes include $\frac{1}{4}$ in (6mm) seam allowances

All pieces to be cut initially as squares or rectangles

Snowman Block:

7in x $13\frac{1}{2}$ in (17.8cm x 34.3cm) unfinished

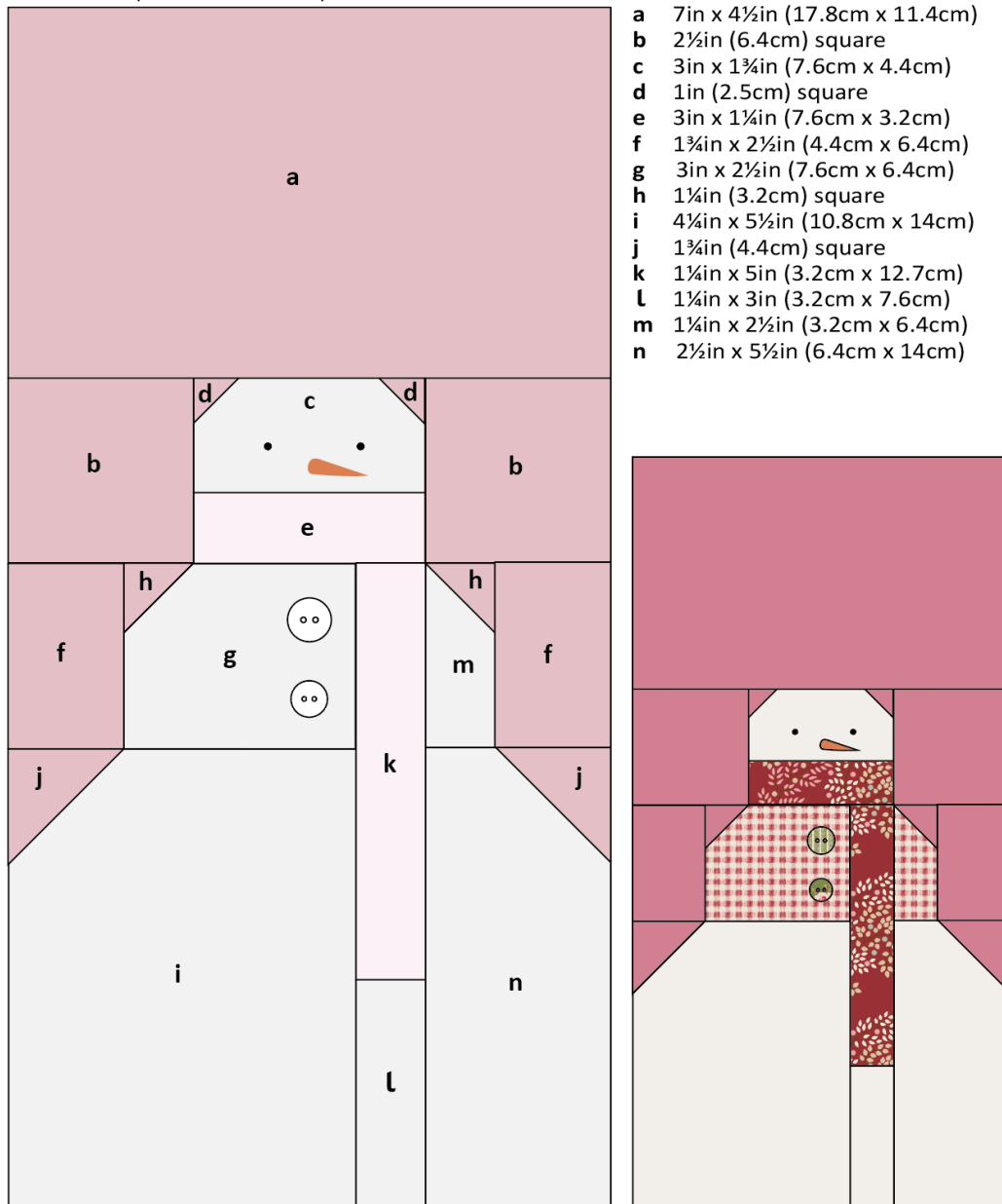


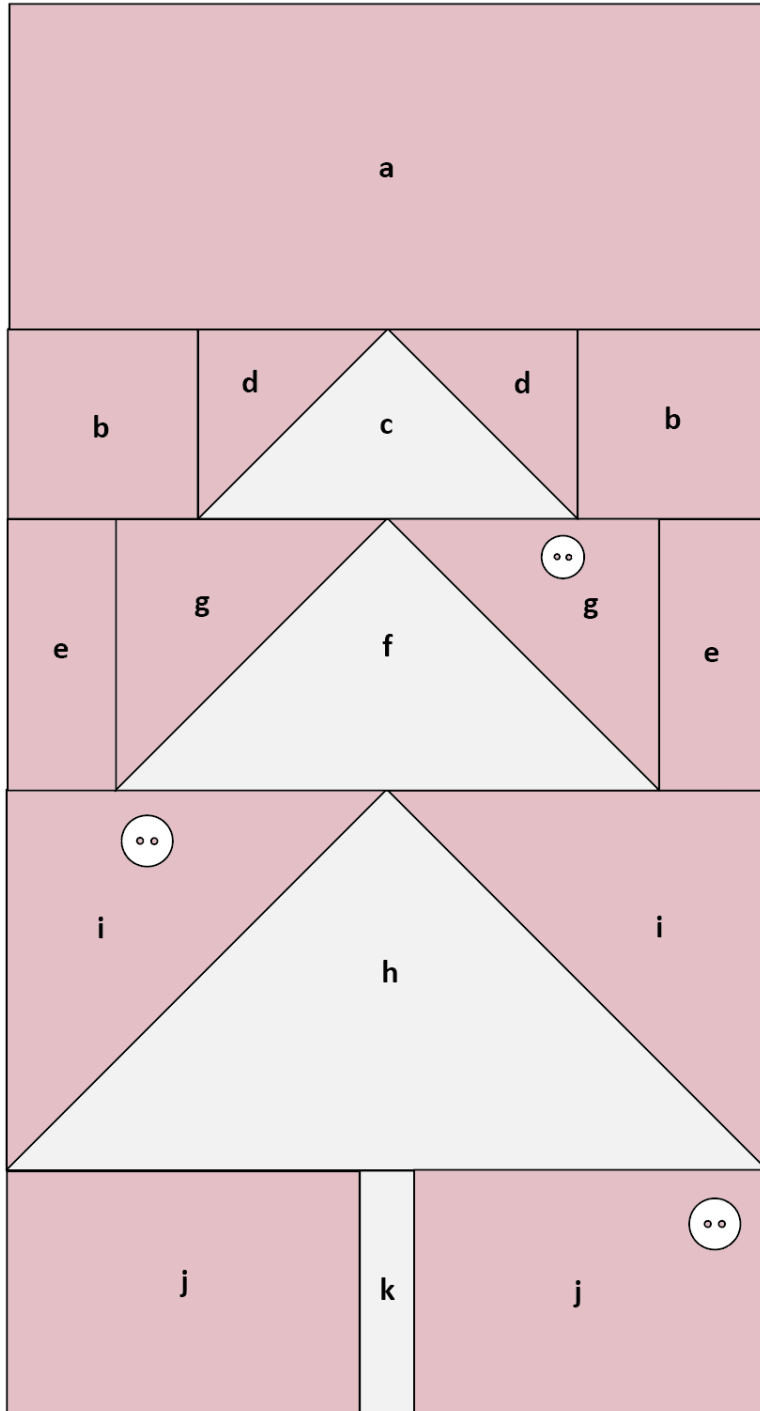
Fig D Cut measurements for the fabrics in a Christmas Tree Block

Sizes include $\frac{1}{4}$ in (6mm) seam allowances

All pieces to be cut initially as squares or rectangles

Christmas Tree Block:

$7\frac{1}{2}$ in x $13\frac{1}{2}$ in (19cm x 34.3cm) unfinished



- a $7\frac{1}{2}$ in x $3\frac{1}{2}$ in (19cm x 9cm)
- b $2\frac{1}{4}$ in (5.7cm) square
- c 4 in x $2\frac{1}{4}$ in (10.2cm x 5.7cm)
- d $2\frac{1}{4}$ in (5.7cm) square
- e $1\frac{1}{2}$ in x 3 in (3.8cm x 7.6cm)
- f $5\frac{1}{2}$ in x 3 in (14cm x 7.6cm)
- g 3 in (7.6cm) square
- h $7\frac{1}{2}$ in x 4 in (19cm x 10.2cm)
- i 4 in (10.2cm) square
- j $3\frac{3}{4}$ in x $2\frac{3}{4}$ in (9.5cm x 7cm)
- k 1 in x $2\frac{1}{4}$ in (2.5cm x 7cm)

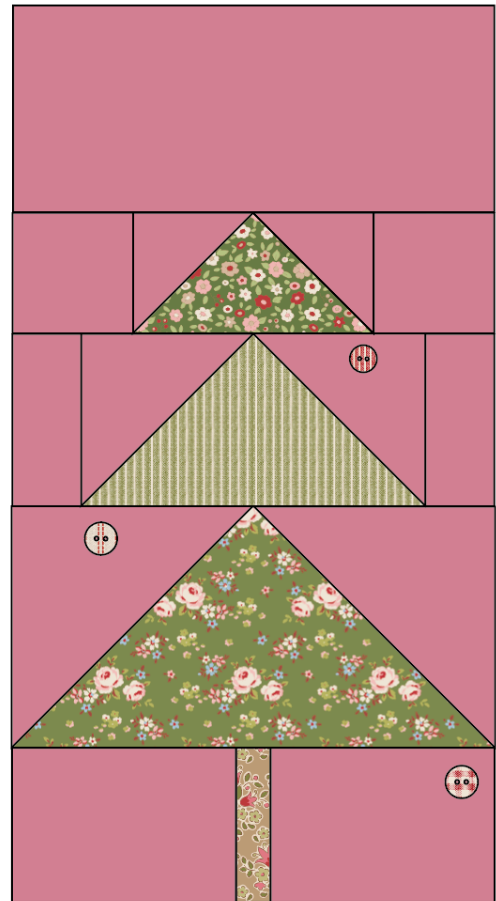


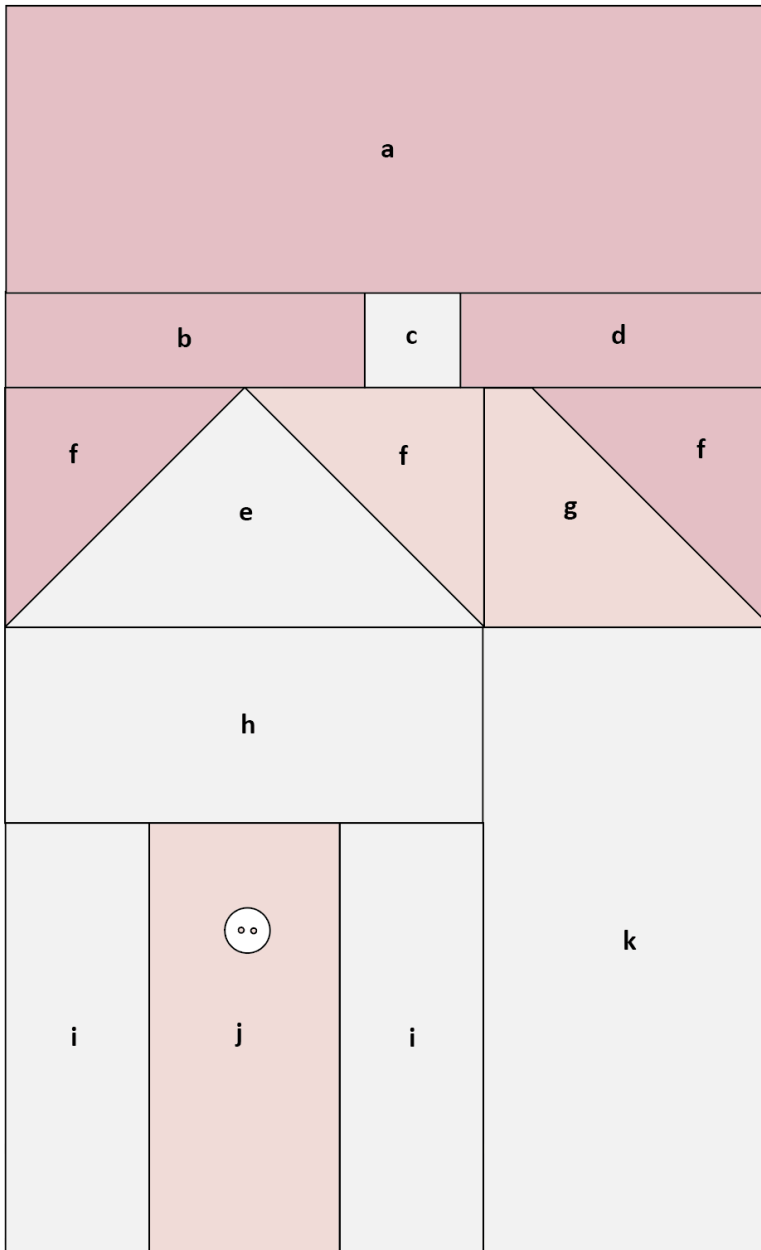
Fig E Cut measurements for the fabrics in a Gingerbread House Block

Sizes include $\frac{1}{4}$ in (6mm) seam allowances

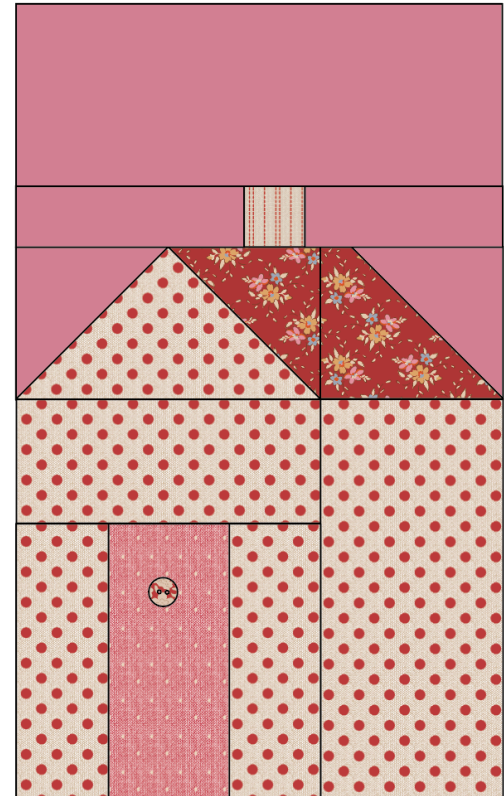
All pieces to be cut initially as squares or rectangles

Gingerbread House Block:

$8\frac{1}{2}$ in x $13\frac{1}{2}$ in (21.6cm x 34.3cm) unfinished



- a $8\frac{1}{2}$ in x $3\frac{1}{2}$ in (21.6cm x 9cm)
- b $4\frac{1}{4}$ in x $1\frac{1}{2}$ in (10.8cm x 3.8cm)
- c $1\frac{1}{2}$ in (3.8cm) square
- d $3\frac{3}{4}$ in x $1\frac{1}{2}$ in (9.5cm x 3.8cm)
- e $5\frac{1}{2}$ in x 3in (14cm x 7.6cm)
- f 3in (7.6cm) square
- g $3\frac{1}{2}$ in x 3in (9cm x 7.6cm)
- h $5\frac{1}{2}$ in x $2\frac{1}{2}$ in (14cm x 6.4cm)
- i 2in x 5in (5.1cm x 12.7cm)
- j $2\frac{1}{2}$ in x 5in (6.4cm x 12.7cm)
- k $3\frac{1}{2}$ in x 7in (9cm x 17.8cm)



Making the Blocks

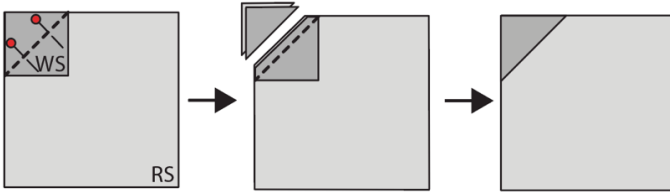
6 Each block is described and illustrated in detail, but there are some common techniques and these will be described first. Refer back to these techniques when needed.

Making corner triangle units:

7 Fig F shows the stages of creating a corner triangle. Place the larger piece of fabric right side up (RS). Take the small square and pencil mark a diagonal line on the wrong side (WS). Pin the square right sides together with the larger fabric piece, aligning the edges as shown and with the diagonal line in the direction needed. Sew along the marked line. Trim off excess fabric $\frac{1}{4}$ in (6mm) outside the sewn line and press the triangle outwards. Check the unit is the same size as the original larger piece of fabric, with no distortion.

All corner triangle units are made this way, but sometimes more than one triangle corner is needed, or the triangles are different sizes.

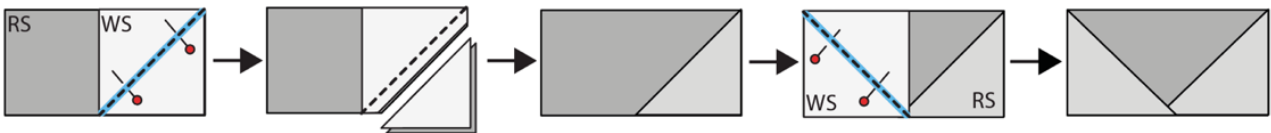
Fig F Making a corner triangle unit



Making a flying goose unit:

8 The Christmas tree and the gingerbread house use flying geese units. These are made using the same principle as corner square triangles, with the stages shown in **Fig G**.

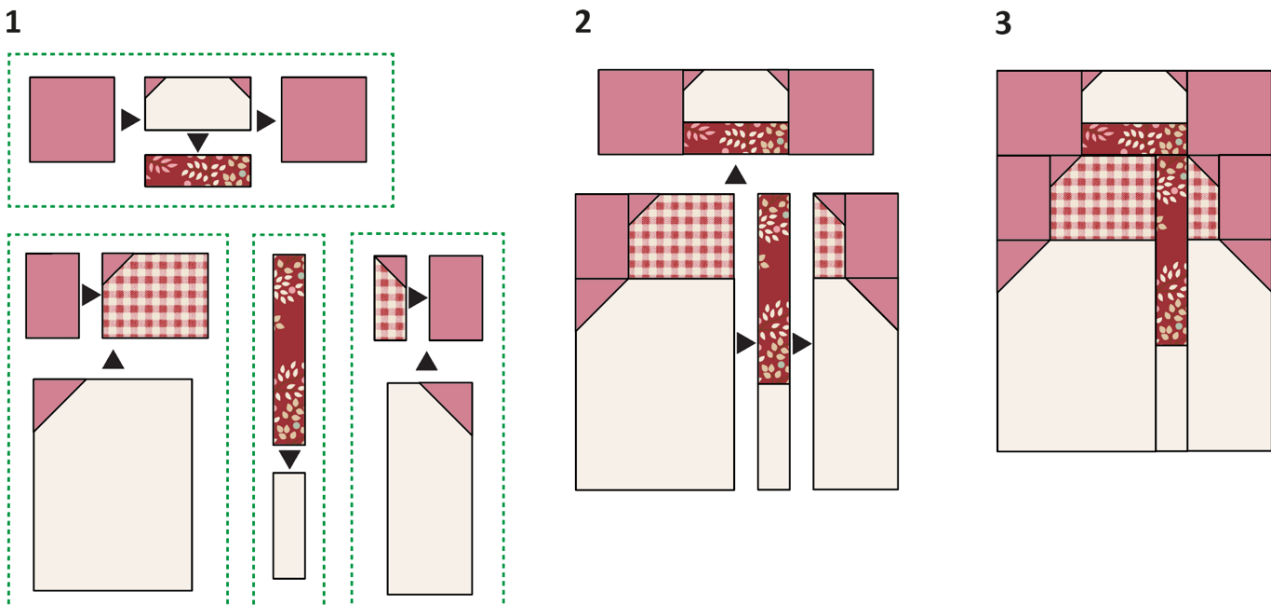
Fig G Making a flying goose unit



Making the Snowman

9 The stages of sewing the snowman block together are shown in **Fig H**. The green dotted boxes show how the smaller sub-sections are sewn together (**Fig H 1**). Use $\frac{1}{4}$ in (6mm) seam allowances and press the seams open or to one side. Now sew the sections together as in **Fig H 2**, to complete the block (**Fig H 3**). Once the block is pressed check it is the size it should be (as given in **Fig C**).

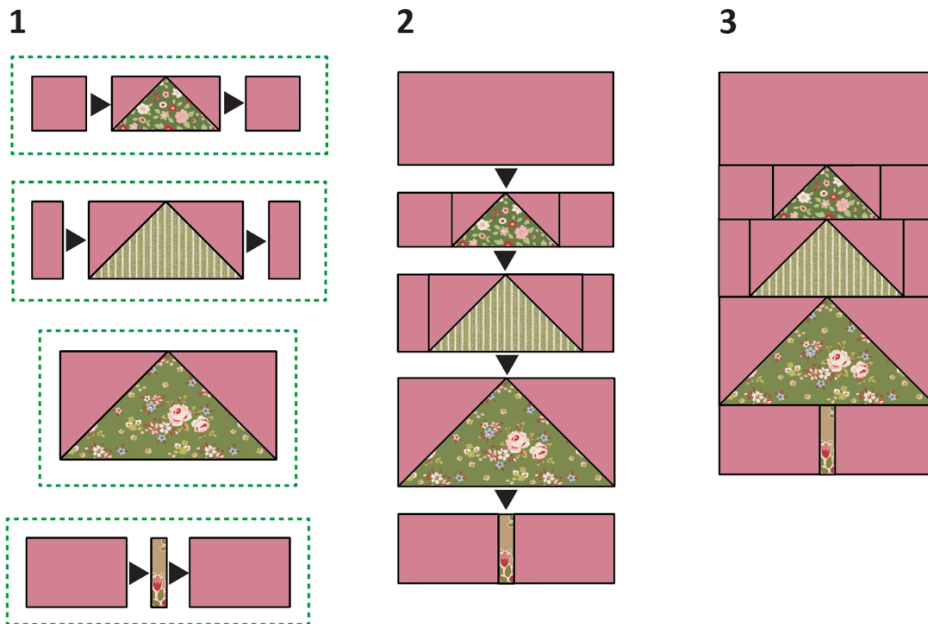
Fig H Making the snowman



Making the Christmas Tree

10 The stages of sewing the Christmas tree block together are shown in **Fig I**. Once the block is pressed check it is the size it should be (as given in **Fig D**).

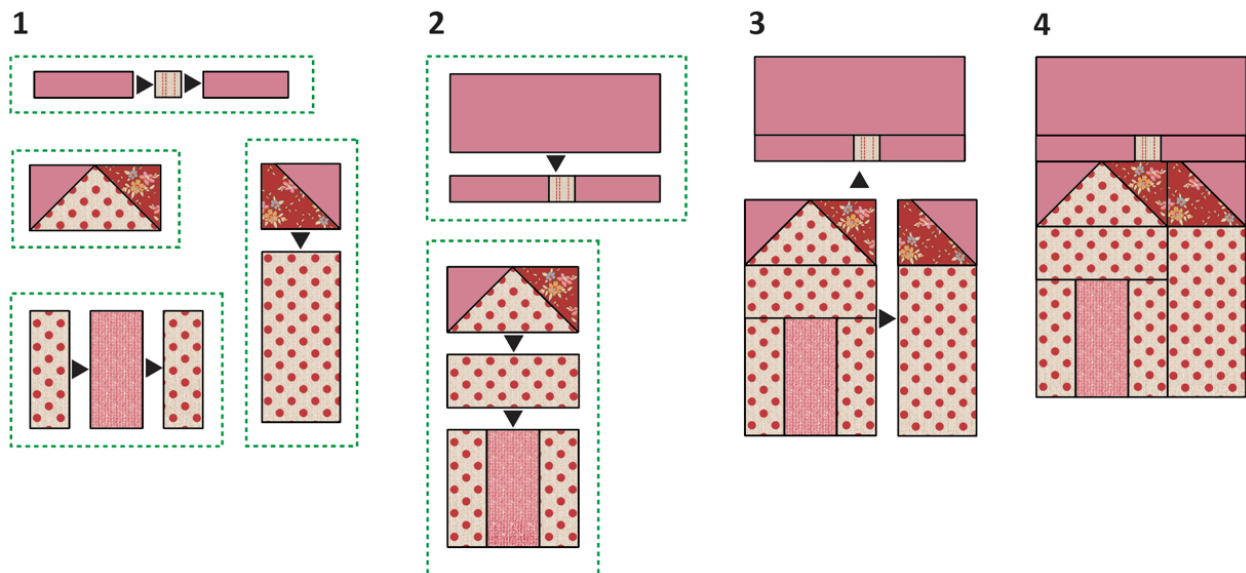
Fig I Making the Christmas tree



Making the Gingerbread House

11 The stages of sewing the gingerbread house block together are shown in **Fig J**. Once the block is pressed check it is the size it should be (as given in **Fig E**).

Fig J Making the gingerbread house



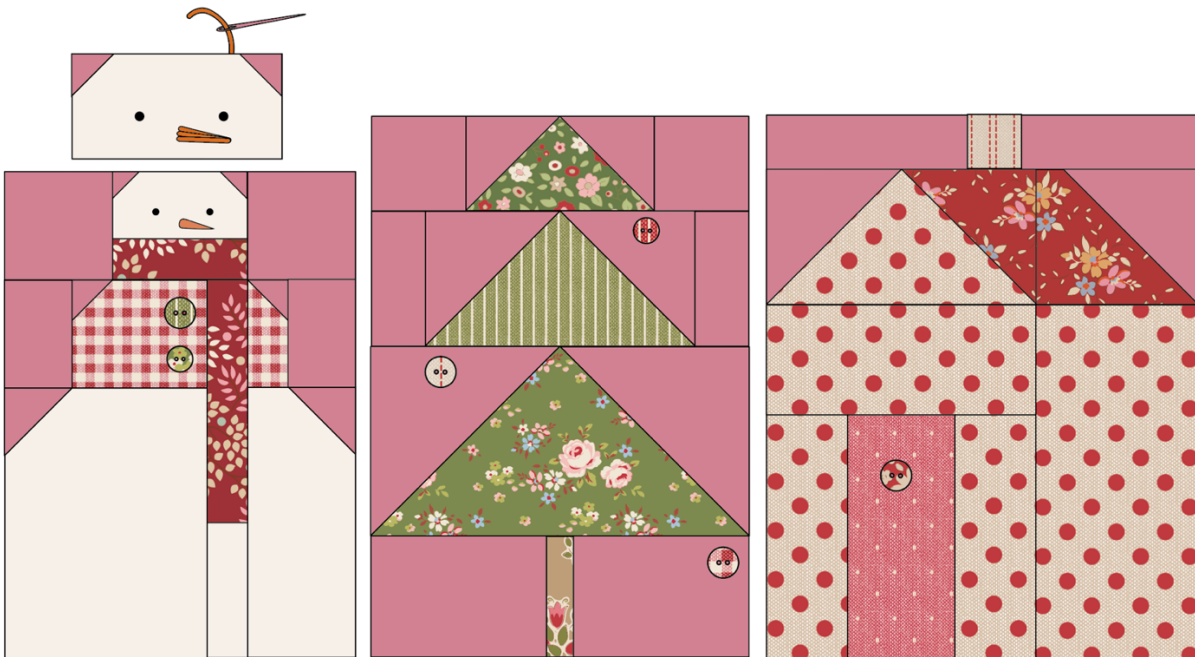
Adding the Embroidery and Buttons

12 When the blocks have been made, the embroidery and buttons can be added – it is easier to do this before all of the blocks are sewn together.

- For the eyes on the snowman, work French knots using six strands of black embroidery thread wrapped twice around the needle.
- For the nose on the snowman, use six strands of ginger embroidery thread and work two or three long stitches, tapering the stitches to a point, as shown in **Fig K**.
- For the buttons, use matching sewing thread to sew them into place in the positions shown in **Fig K**. They can be a mixture of 10mm and 12mm diameter buttons, as shown.

Fig K Adding the buttons, nose and French knots

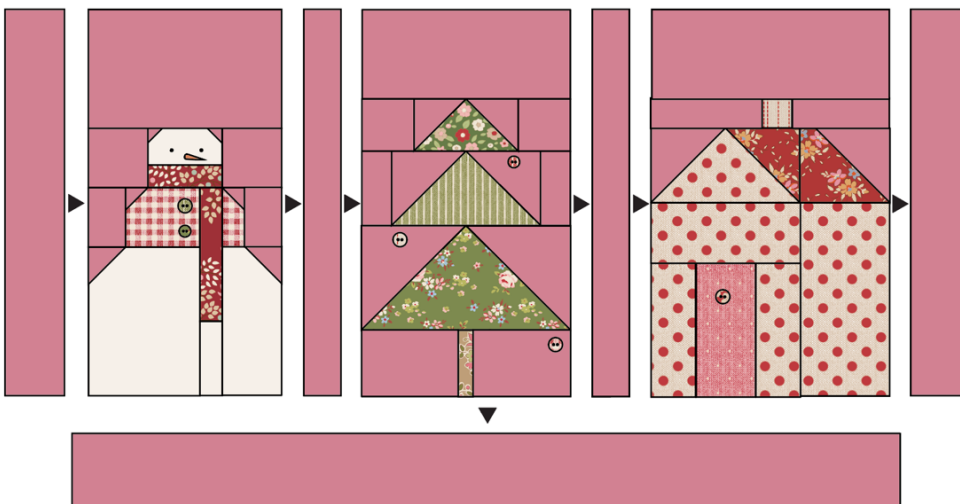
Note, the top area of each block has been omitted to show the buttons and stitching in more detail



Assembling the Pillow

13 Sew the blocks together with the two sashing strips in between and the borders at the sides, as in **Fig L**. Press seams towards the border/sashing pieces. Now add the bottom border strip and press seams outwards.

Fig L Sewing the patchwork together



Quilting and Finishing

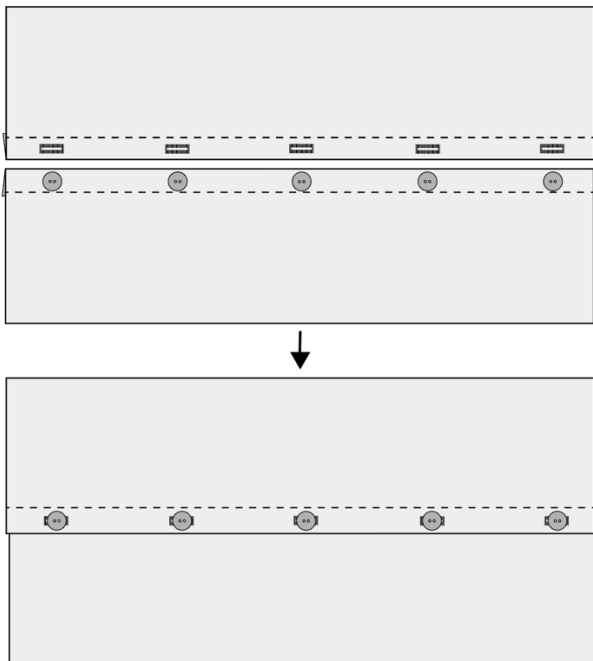
14 Make a quilt sandwich of the patchwork, wadding (batting) and lining fabric (if using). Quilt as desired. Trim off excess wadding and lining fabric to match the patchwork size.

15 To make up the pillow cover, take the two pieces of fabric for the cushion back and on one long edge of each piece, create a hem by turning the edge over by 1in (2.5cm), twice. Sew the seams with matching thread and press (**Fig M**). The diagram is shown in greys, so you can use the Tilda fabric and buttons suggested in the Materials list, or those of your choice.

16 For the fastening, using your sewing machine, create five equally spaced buttonholes within the hem of one of the pieces. Sew five buttons onto the other piece, matching their positions to the buttonholes. Note: Instead of making buttonholes, you could use a hook and loop fastening, such as Velcro, to fasten the cover and sew on the buttons as a decorative feature.

17 The pillow has a bound edge, so the pieces are assembled with right sides out, as follows. On the backing, fasten the buttons into the buttonholes and place the whole piece right side down. Place the quilted patchwork on top, right side up. Make sure the outer edges of all pieces are aligned. Pin or tack (baste) the layers together and then bind as normal. As you sew the binding in place it will fix the other layers together. Press the cover and insert a pillow pad to finish.

Fig M Making up the cover



Winter Pillow

(Brown Colourway)

Two charming pillows have been designed to feature three of the festive motifs from the Christmas Calendar Quilt, which means that they complement the quilt perfectly. This pillow has a brown Chambray background and there is a second pillow with a red Chambray background (see tildasworld.com for the red pillow and also the quilt instructions). Pretty Tilda buttons have been used as a decorative and functional feature on the pillow and can be used to hang little surprise gifts.

Difficulty Rating **

Materials

- Fabric 1: ½yd (50cm) – Chambray brown (160035) (background)
- Fabric 2: about 9in (23cm) square – Solid dove white (120001)
- Fabric 3: 5in x 2in (12.7cm x 5.1cm) – Avery red (130144)
- Fabric 4: 1¼in x 2in (3.2cm x 5.1cm) – Harper pink (130146)
- Fabric 5: 1in x 2in (2.5cm x 5.1cm) – Lulu sand (130148)
- Fabric 6: about 5in (13cm) square – Brie red (130149)
- Fabric 7: 6½in x 6in (16.5cm x 15.2cm) – Carla red (130152)
- Fabric 8: 2¾in x 3in (7cm x 7.6cm) – Stripe green (160082)
- Fabric 9: about 12in (30.5cm) square – Seamstripe red (160083)
- Fabric 10: about 5in (13cm) square – Tiny Stripe red (160084)
- Fabric 11: about 5in (13cm) square – Plaid burgundy (160086)
- Wadding (batting): 30in x 18in (76cm x 46cm)
- Lining fabric: 30in x 18in (76cm x 46cm) (optional)
- Fabric for back of pillow: ⅝yd (60cm) – Lulu sand (130148)
- Binding fabric: ¼yd (25cm) – Lulu sand (130148)
- Piecing and quilting threads
- Black stranded cotton (floss) for eye embroidery
- Quilter's ruler, rotary cutter and mat
- Pack of Creating Memories Buttons in Christmas Reds and Greens 10mm and 12mm (400065)
- Pillow pad to fit cover

Finished Size

27¼in x 15½in (69.2cm x 39.4cm)

Fabric Notes

For some of the fabrics only a single piece is required, so the exact cutting size is given in the Materials list.

General Notes

- Fabric quantities are based on a usable width of 42in (107cm), unless otherwise stated.
- Measurements are in imperial inches with metric conversions in brackets – use only *one* system throughout (preferably inches). Width measurements are generally given first.

- Press fabric before cutting and trim as needed to square up the fabric pattern/weave, using a quilting ruler to cut the top raw edge at 90 degrees to the selvages.
- Use 1/4in (6mm) seams unless otherwise instructed.
- Read all the instructions through before you start.

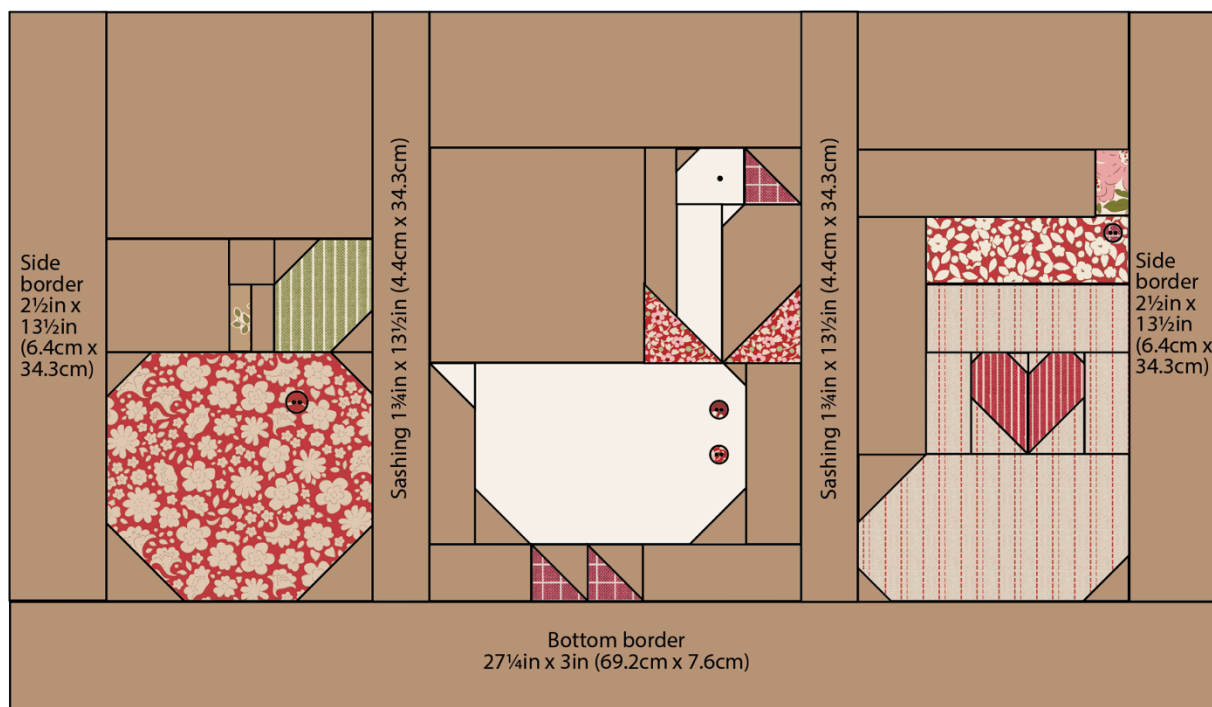
Pillow Layout

1 The pillow is made up of three different blocks, separated by strips of vertical sashing. There is a border at each side and at the bottom of the pillow. See **Fig A** for the fabrics used and **Fig B** for the pillow layout.

Fig A Fabric swatches (Winter Pillow – Brown)



Fig B Pillow layout (Winter Pillow – Brown)



Cutting Out

2 From Fabric 1 cut the sashing and border pieces first, cutting the following pieces (**Fig B**).

- Sashing – two strips 1¾in x 13½in (4.4cm x 34.3cm).
- Side borders – two strips 2½in x 13½in (6.4cm x 34.3cm).
- Lower border – one strip 27¼in x 3in (69.2cm x 7.6cm).

3 Each of the three blocks has a diagram giving the cut measurements, as well as the positions of the exact fabrics to use, so follow the diagrams carefully to cut the fabrics. Seam allowances of ¼in (6mm) are included. (For some of the fabrics only a single piece is required, so the exact cutting size is also given in the Materials list.)

- **Fig C** for the Apple block.
- **Fig D** for the Goose block.
- **Fig E** for the Christmas Stocking block.

4 From the fabric for the back of the pillow, cut two pieces, each about 29in x 11in (73.7cm x 28cm).

5 Cut the binding fabric into three 2½in (6.4cm) x width of fabric strips. Sew the strips together end to end and press seams open. Press the binding in half along the length, wrong sides together.

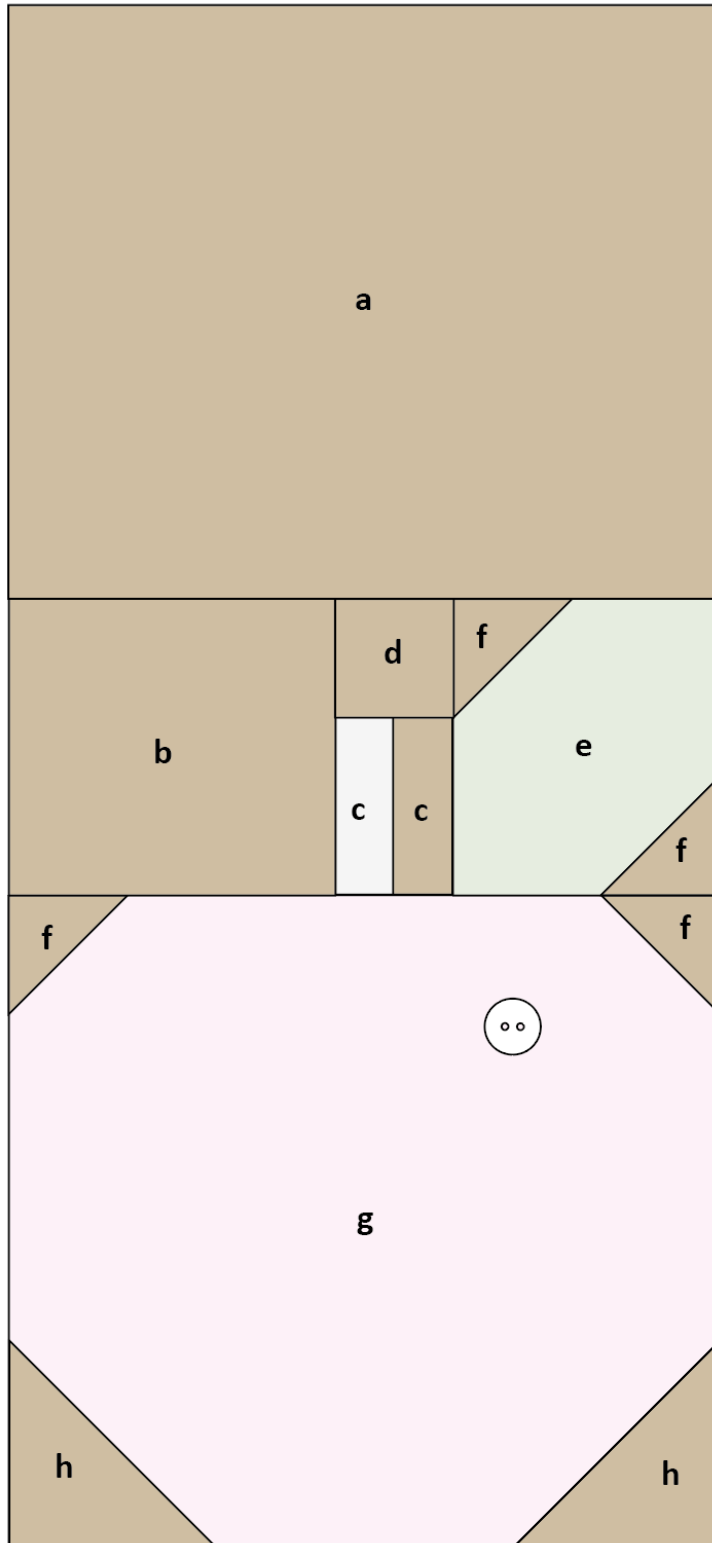
Fig C Cut measurements for the fabrics in an Apple Block

Sizes include $\frac{1}{4}$ in (6mm) seam allowances

All pieces to be cut initially as squares or rectangles

Apple Block:

$6\frac{1}{2}$ in x $13\frac{1}{2}$ in (16.5cm x 34.3cm) unfinished



- a** $6\frac{1}{2}$ in x $5\frac{1}{2}$ in (16.5cm x 14cm)
- b** $3\frac{1}{4}$ in x 3in (8.3cm x 7.6cm)
- c** 1in x 2in (2.5cm x 5.1cm)
- d** $1\frac{1}{2}$ in (3.8cm) square
- e** $2\frac{3}{4}$ in x 3in (7cm x 7.6cm)
- f** $1\frac{1}{2}$ in (3.8cm) square
- g** $6\frac{1}{2}$ in x 6in (16.5cm x 15.2cm)
- h** $2\frac{1}{4}$ in (5.7cm) square

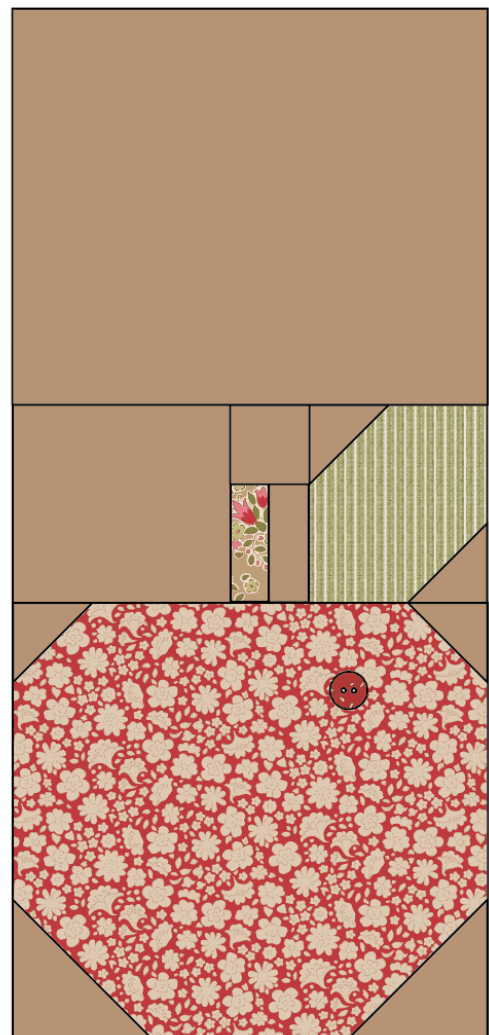


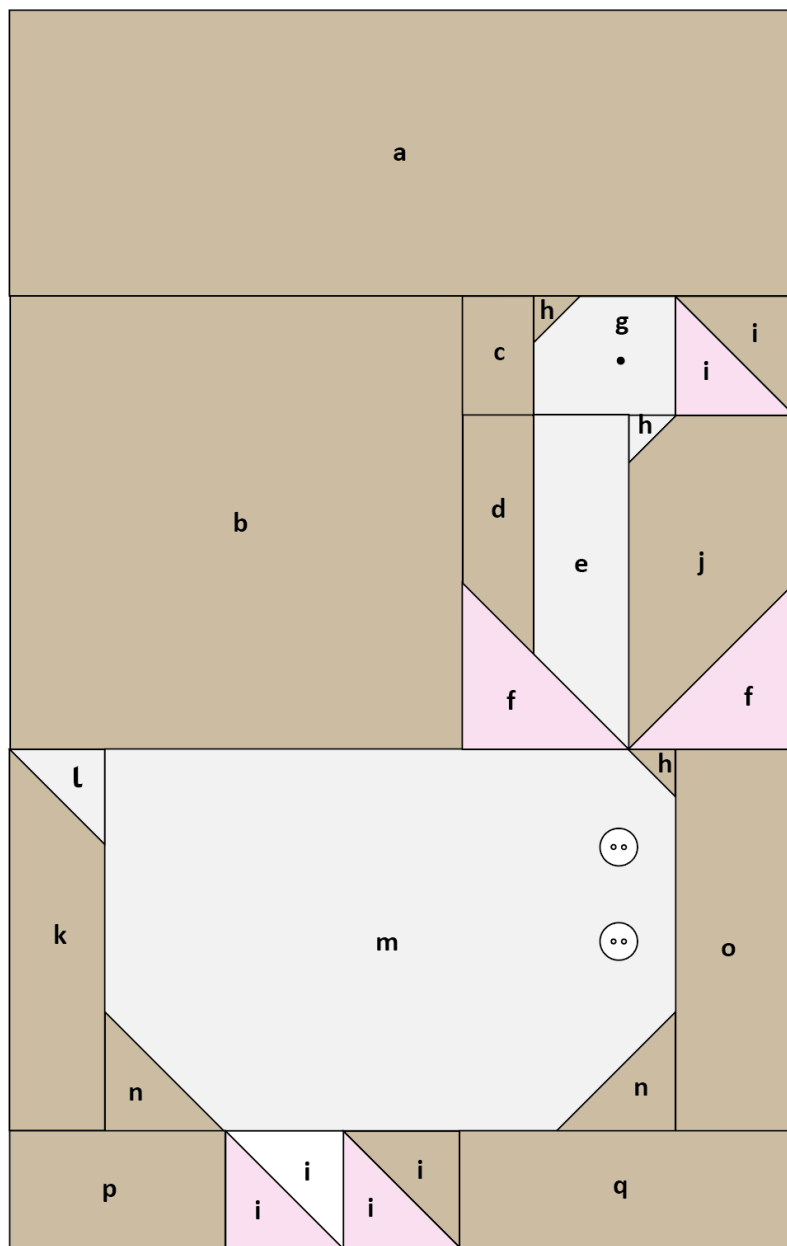
Fig D Cut measurements for the fabrics in a Goose Block

Sizes include $\frac{1}{4}$ in (6mm) seam allowances

All pieces to be cut initially as squares or rectangles

Goose Block:

$8\frac{3}{4}$ in x $13\frac{1}{2}$ in (22.2cm x 34.3cm) unfinished



- a $8\frac{3}{4}$ in x $3\frac{1}{2}$ in (22.2cm x 9cm)
- b $5\frac{1}{2}$ in (13.3cm) square
- c $1\frac{1}{4}$ in x $1\frac{3}{4}$ in (3.2cm x 4.4cm)
- d $1\frac{1}{4}$ in x 4in (3.2cm x 10.2cm)
- e $1\frac{1}{2}$ in x 4in (3.8cm x 10.2cm)
- f $2\frac{1}{4}$ in (5.7cm) square
- g 2in x $1\frac{3}{4}$ in (5.1cm x 4.4cm)
- h 1in (2.5cm) square
- i $2\frac{1}{4}$ in (5.7cm) square,
for $1\frac{3}{4}$ in (4.4cm) half-square
triangle (unfinished)
- j $2\frac{1}{4}$ in x 4in (5.7cm x 10.2cm)
- k $1\frac{1}{2}$ in x $4\frac{1}{2}$ in (3.8cm x 11.4cm)
- l $1\frac{1}{2}$ in (3.8cm) square
- m $6\frac{1}{2}$ in x $4\frac{1}{2}$ in (16.5cm x 11.4cm)
- n $1\frac{3}{4}$ in (4.4cm) square
- o $1\frac{3}{4}$ in x $4\frac{1}{2}$ in (4.4cm x 11.4cm)
- p $2\frac{3}{4}$ in x $1\frac{3}{4}$ in (7cm x 4.4cm)
- q 4in x $1\frac{3}{4}$ in (10.2cm x 4.4cm)

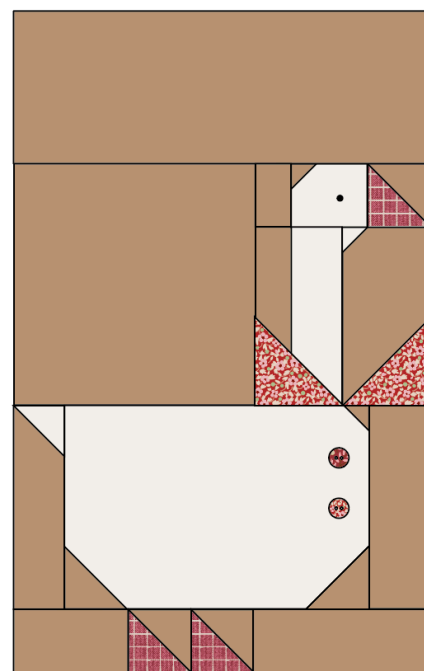


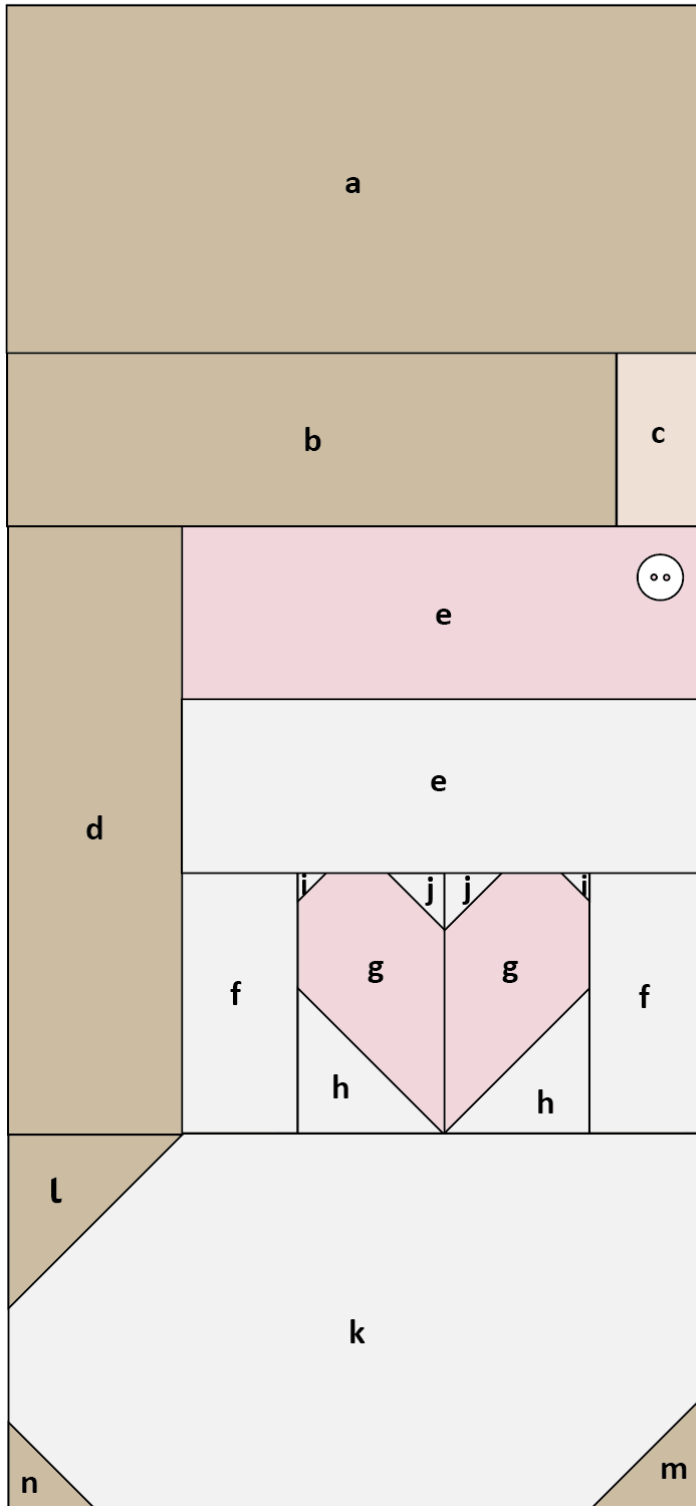
Fig E Cut measurements for the fabrics in a Christmas Stocking Block

Sizes include $\frac{1}{4}$ in (6mm) seam allowances

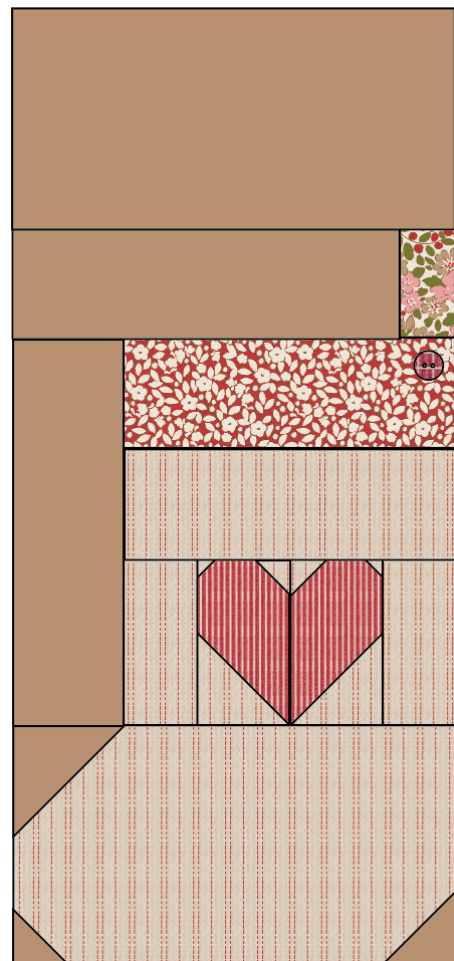
All pieces to be cut initially as squares or rectangles

Christmas Stocking Block:

$6\frac{1}{2}$ in x $13\frac{1}{2}$ in (16.5cm x 34.3cm) unfinished



- a** $6\frac{1}{2}$ in x $3\frac{1}{2}$ in (16.5cm x 9cm)
- b** $5\frac{3}{4}$ in x 2in (14.6cm x 5.1cm)
- c** $1\frac{1}{4}$ in x 2in (3.2cm x 5.1cm)
- d** 2in x $5\frac{3}{4}$ in (5.1cm x 14.6cm)
- e** 5in x 2in (12.7cm x 5.1cm)
- f** $1\frac{1}{2}$ in x $2\frac{3}{4}$ in (3.8cm x 7cm)
- g** $1\frac{3}{4}$ in x $2\frac{3}{4}$ in (4.4cm x 7cm)
- h** $1\frac{3}{4}$ in (4.4cm) square
- i** $\frac{3}{4}$ in (2cm) square
- j** 1in (2.5cm) square
- k** $6\frac{1}{2}$ in x $3\frac{3}{4}$ in (16.5cm x 9.5cm)
- l** 2in (5.1cm) square
- m** $1\frac{1}{2}$ in (3.8cm) square
- n** $1\frac{1}{4}$ in (3.2cm) square



Making the Blocks

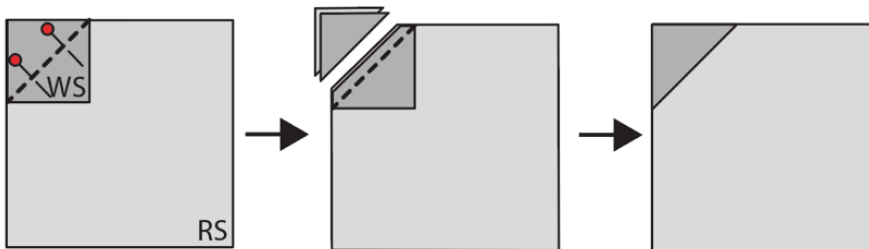
6 Each block is described and illustrated in detail, but there are some common techniques and these will be described first. Refer back to these techniques when needed.

Making corner triangle units:

7 **Fig F** shows the stages of creating a corner triangle. Place the larger piece of fabric right side up (RS). Take the small square and pencil mark a diagonal line on the wrong side (WS). Pin the square right sides together with the larger fabric piece, aligning the edges as shown and with the diagonal line in the direction needed. Sew along the marked line. Trim off excess fabric $\frac{1}{4}$ in (6mm) outside the sewn line and press the triangle outwards. Check the unit is the same size as the original larger piece of fabric, with no distortion.

All corner triangle units are made this way, but sometimes more than one triangle corner is needed, or the triangles are different sizes.

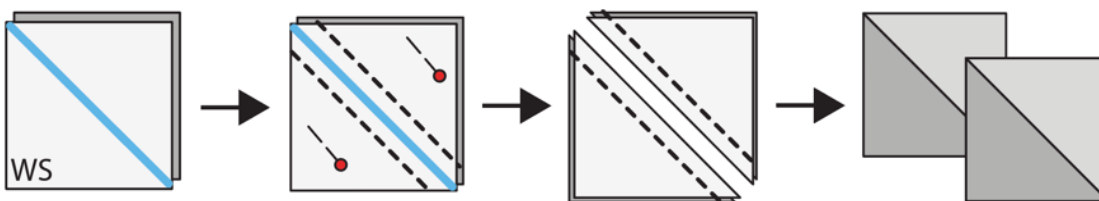
Fig F Making a corner triangle unit



Making half-square triangle units:

8 The goose block uses some half-square triangle (HST) units. **Fig G** shows the stages of making these units. This method makes two units at once. Take two different squares and on the wrong side of the lighter square, pencil mark the diagonal line. Place the two squares right sides (RS) together and sew $\frac{1}{4}$ in (6mm) away from the marked line on both sides, as shown. Cut the units apart along the marked line and press the units, normally towards the darker fabric. Check each unit is $1\frac{3}{4}$ in (4.4cm) square (unfinished).

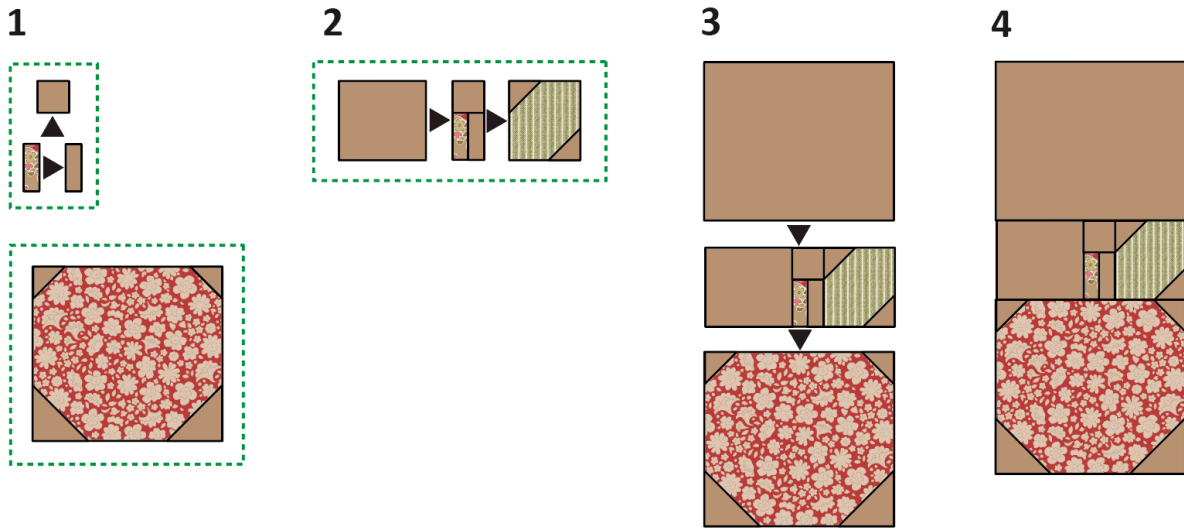
Fig G Making half-square triangle units



Making the Apple

9 The stages of sewing the apple block together are shown in **Fig H**. The green dotted boxes show how the smaller sub-sections are sewn together (**Fig H 1**). Use $\frac{1}{4}$ in (6mm) seam allowances and press the seams open or to one side. Now sew the sections together as in **Fig H 2**, to complete the block (**Fig H 3**). Once the block is pressed check it is the size it should be (as given in **Fig C**).

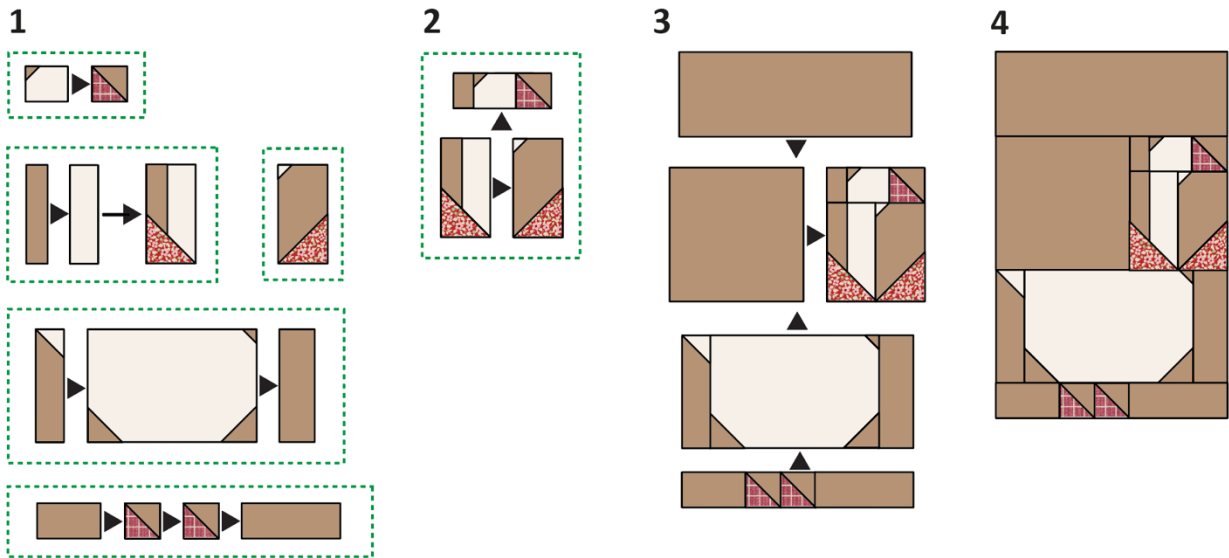
Fig H Making the apple



Making the Goose

10 The stages of sewing the goose block together are shown in **Fig I**. Once the block is pressed check it is the size it should be (as given in **Fig D**).

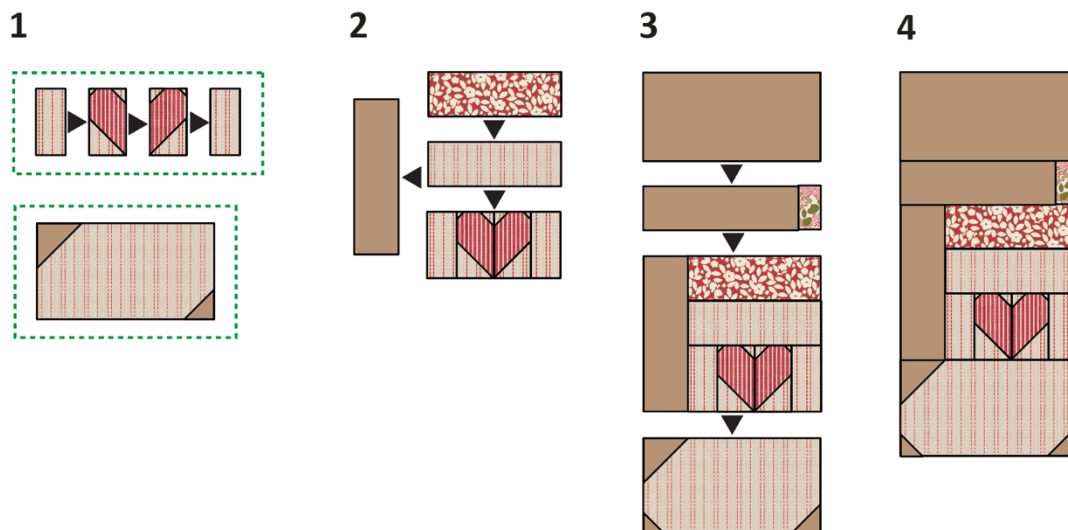
Fig I Making the goose



Making the Christmas Stocking

11 The stages of sewing the Christmas stocking block together are shown in **Fig J**. Once the block is pressed check it is the size it should be (as given in **Fig E**).

Fig J Making the Christmas stocking



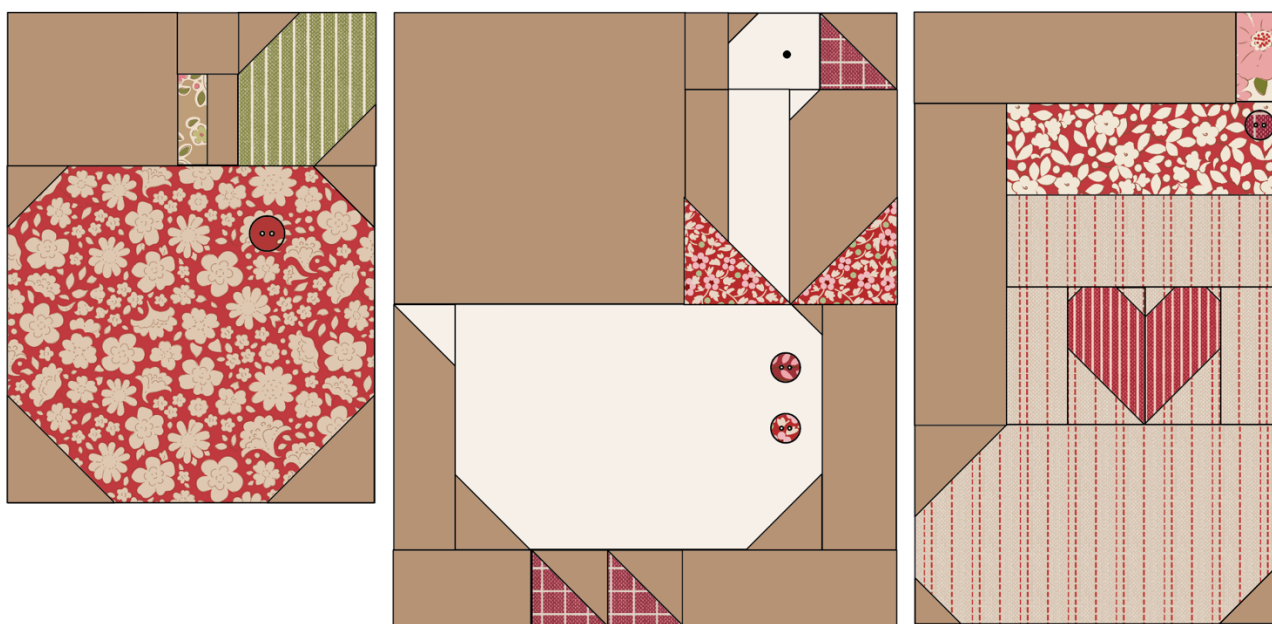
Adding the Embroidery and Buttons

12 When the blocks have been made, the embroidery and buttons can be added – it is easier to do this before all of the blocks are sewn together.

- For the eye on the goose, work a French knot using six strands of black embroidery thread wrapped twice around the needle.
- For the buttons, use matching sewing thread to sew them into place in the positions shown in **Fig K**. They can be a mixture of 10mm and 12mm diameter buttons, as shown.

Fig K Adding the buttons and French knot

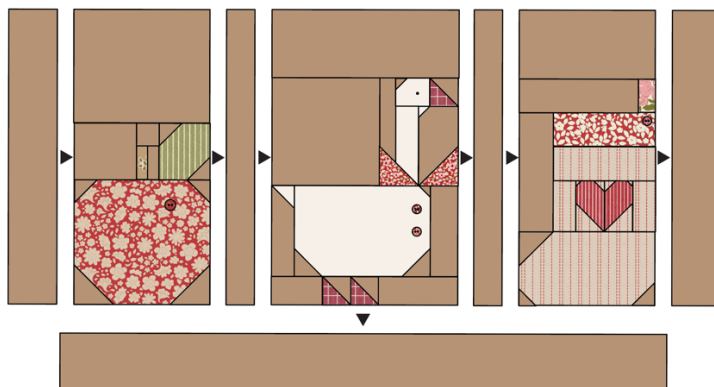
Note, the top area of each block has been omitted to show the buttons and stitching in more detail



Assembling the Pillow

13 Sew the blocks together with the two sashing strips in between and the borders at the sides, as in **Fig L**. Press seams towards the border/sashing pieces. Now add the bottom border strip and press seams outwards.

Fig L Sewing the patchwork together



Quilting and Finishing

14 Make a quilt sandwich of the patchwork, wadding (batting) and lining fabric (if using). Quilt as desired. Trim off excess wadding and lining fabric to match the patchwork size.

15 To make up the pillow cover, take the two pieces of fabric for the cushion back and on one long edge of each piece, create a hem by turning the edge over by 1 in (2.5cm), twice. Sew the seams with matching thread and press (**Fig M**). The diagram is shown in greys, so you can use the Tilda fabric and buttons suggested in the Materials list, or those of your choice.

16 For the fastening, using your sewing machine, create five equally spaced buttonholes within the hem of one of the pieces. Sew five buttons onto the other piece, matching their positions to the buttonholes. Note: Instead of making buttonholes, you could use a hook and loop fastening, such as Velcro, to fasten the cover and sew on the buttons as a decorative feature.

17 The pillow has a bound edge, so the pieces are assembled with right sides out, as follows. On the backing, fasten the buttons into the buttonholes and place the whole piece right side down. Place the quilted patchwork on top, right side up. Make sure the outer edges of all pieces are aligned. Pin or tack (baste) the layers together and then bind as normal. As you sew the binding in place it will fix the other layers together. Press the cover and insert a pillow pad to finish.

Fig M Making up the cover

