



Tilda®

*Creating Memories*  
SUMMER

Blue Whale  
Pillows



## Whale Pillows (Lulu)

Two delightful whales, Lulu and Evie, make wonderful pillows, and are perfectly suited to the Blue Whale Quilt. The Lulu pillow has a striped background and is described in detail, using only two fabrics. The Evie version of the pillow has a tiny dot background and uses the same instructions, with the fabrics and layout given at the end of these instructions. If you want to make Blue Whale Quilt, visit [tildasworld.com](http://tildasworld.com) for the instructions.

Difficulty Rating \*\*

### Materials (Lulu Whale)

- Fabric 1:  $\frac{3}{8}$ yd (40cm) – Stripe blue (160068) (background)
- Fabric 2:  $\frac{1}{4}$ yd (25cm) or fat quarter – Lulu blue (130130)
- Wadding (batting): 25in x 14in (63.5cm x 35.5cm)
- Lining fabric: 25in x 14in (63.5cm x 35.5cm) (optional)
- Fabric for back of pillow:  $\frac{5}{8}$ yd (60cm) – Tiny Stripe blue (160070)
- Binding fabric:  $\frac{1}{4}$ yd (25cm) – Harper blue (130128)
- Piecing and quilting threads
- Black stranded cotton (floss) for eye embroidery
- Quilter's ruler, rotary cutter and mat
- Five buttons for back fastening (optional): Sailboat and Ocean Blue 10mm and 12mm (400063)
- Pillow pad to fit cover

### Finished Size

24in x 13in (61cm x 33cm)

### Fabric Notes

There is enough of Fabric 1 to cut the border pieces so the stripe in the pattern runs in the same direction on each piece.

### General Notes

- Fabric quantities are based on a usable width of 42in (107cm), unless otherwise stated.
- Measurements are in imperial inches with metric conversions in brackets – use only *one* system throughout (preferably inches). Width measurements are generally given first.
- Press fabric before cutting and trim as needed to square up the fabric pattern/weave, using a quilting ruler to cut the top raw edge at 90 degrees to the selvages.
- Use  $\frac{1}{4}$ in (6mm) seams unless otherwise instructed.
- Read all the instructions through before you start.

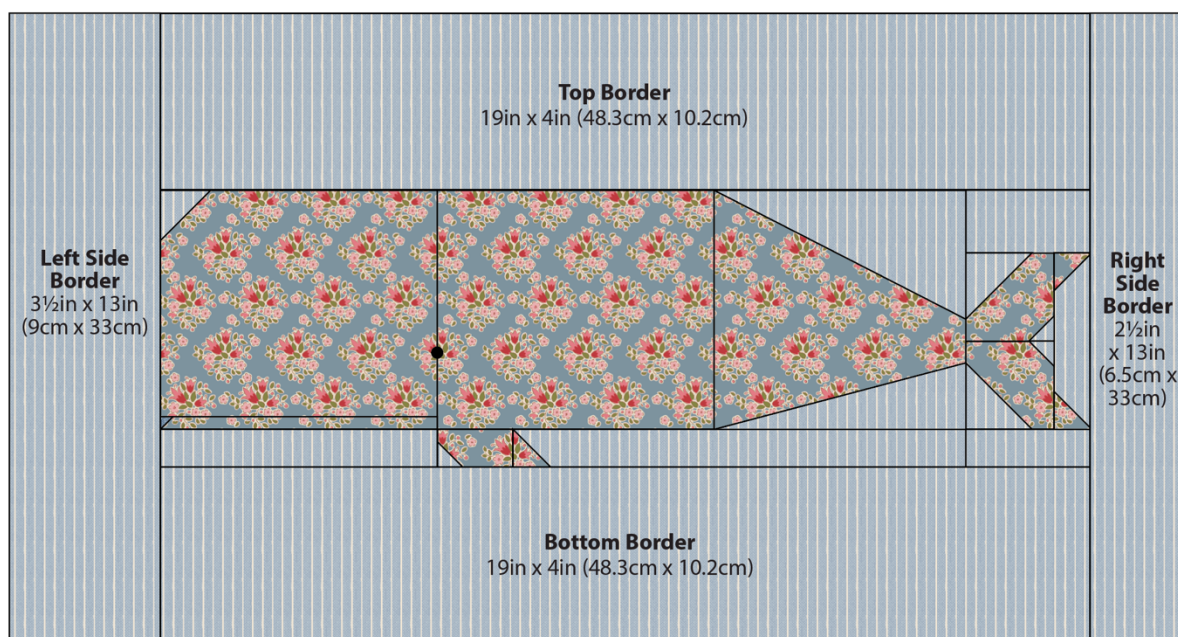
## Pillow Layout

**1** The pillow is made up of a single whale block, bordered by fabric strips at the sides, top and bottom. Refer to **Fig A** for the fabrics used and **Fig B** for the pillow layout.

**Fig A** Fabric swatches (Lulu Whale Pillow)



**Fig B** Pillow layout (Lulu)



## Cutting Out

**2** From Fabric 1 cut the border strips first, as follows (see also, **Fig B**). It is best to have the stripes in the pattern running in the same direction.

- Top and bottom of pillow – two strips 19in x 4in (48.3cm x 10.2cm).
- Sides of pillow – one strip 3 1/2in x 13in (9cm x 33cm) for left-hand side and one strip 2 1/2in x 13in (6.5cm x 33cm) for the right-hand side.

**3** For the block, cut the following pieces from Fabric 1, following **Fig C** for the cut measurements.

**4** For the block, cut the following pieces from Fabric 2, following **Fig C** for the cut measurements.

**5** To cut the fabric for the back of the pillow, remove any selvages and cut the fabric into two pieces each about 25in x 10in (63.5cm x 25.5cm).

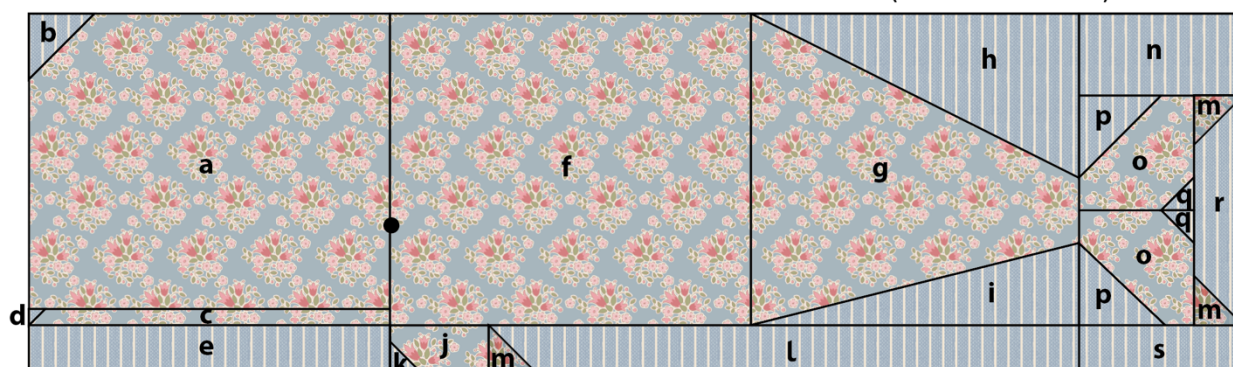
**6** Cut the binding fabric into three strips 2 1/2in (6.4cm) x width of fabric. Sew them together end to end and press seams open. Press in half along the length, wrong sides together.

**Fig C** Cut measurements for the whale block

Sizes include  $\frac{1}{4}$ in (6mm) seam allowances

All pieces to be cut initially as squares or rectangles

**Whale Block:** 19in x 6in (48.3cm x 15.2cm) unfinished



<b>a</b> 6in x 5in (15.2cm x 12.7cm)	<b>h</b> $5\frac{1}{2}$ in x 3in (14cm x 7.6cm)	<b>o</b> $2\frac{1}{4}$ in (5.7cm) square
<b>b</b> $1\frac{1}{2}$ in (3.8cm) square	<b>i</b> $5\frac{1}{2}$ in x $1\frac{1}{4}$ in (14cm x 4.4cm)	<b>p</b> $1\frac{3}{4}$ in (4.4cm) square
<b>c</b> 6in x $\frac{3}{4}$ in (15.2cm x 2cm)	<b>j</b> 2in x $1\frac{1}{4}$ in (5.1cm x 3.2cm)	<b>q</b> 1in (2.5cm) square
<b>d</b> $\frac{3}{4}$ in (2cm) square	<b>k</b> 1in (2.5cm) square	<b>r</b> $1\frac{1}{4}$ in x 4in (3.2cm x 10.2cm)
<b>e</b> 6in x $1\frac{1}{4}$ in (15.2cm x 3.2cm)	<b>l</b> $9\frac{1}{2}$ in x $1\frac{1}{4}$ in (24.1cm x 3.2cm)	<b>s</b> 3in x $1\frac{1}{4}$ in (7.6cm x 3.2cm)
<b>f</b> 6in x $5\frac{1}{4}$ in (15.2cm x 13.3cm)	<b>m</b> $1\frac{1}{4}$ in (3.2cm) square	
<b>g</b> $5\frac{1}{2}$ in x $5\frac{1}{4}$ in (14cm x 13.3cm)	<b>n</b> 3in x $1\frac{3}{4}$ in (7.6cm x 4.4cm)	

**Eye** French knot (see instructions)

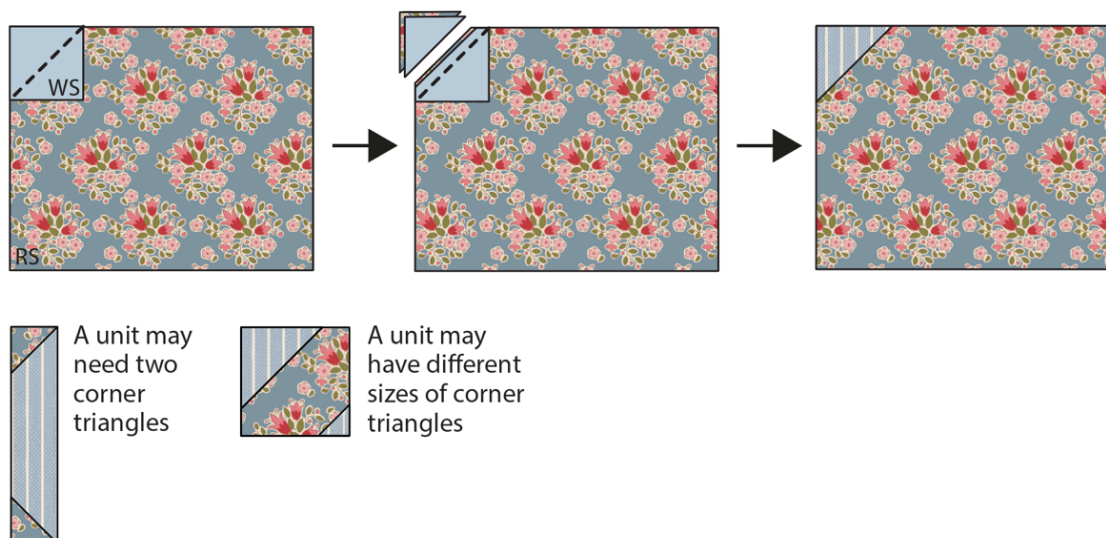
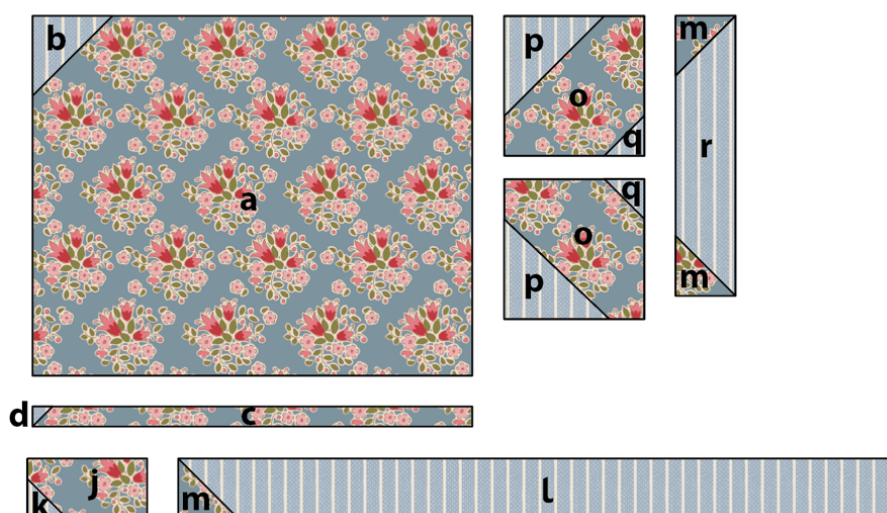
**Making the Whale Block**

**7** The piecing is easy for the block, but a special method is needed to make the triangles in the lower body (described in Step 8). The rest of the piecing uses a corner triangle technique, as follows.

**Corner triangle units:** **Fig D** shows the stages of creating corner triangles. Place the larger piece of fabric right side up (RS). Take the square and pencil mark a diagonal line on the wrong side. Pin the square right sides together with the larger fabric piece, aligning the edges as shown and with the diagonal line in the direction indicated. Sew along the marked line.

Trim off excess fabric  $\frac{1}{4}$ in (6mm) outside the sewn line and press the triangle outwards.

All of the units with corner triangles are made using this basic method. Note that some units have two triangles, while some have different sizes of triangle. The direction of the diagonal line will need to be altered, depending on which corner needs a triangle. **Fig E** shows where in the block corner triangle units are needed. Make all of those needed for the block.

**Fig D** Making corner triangle units**Fig E** Units in the block with corner triangles

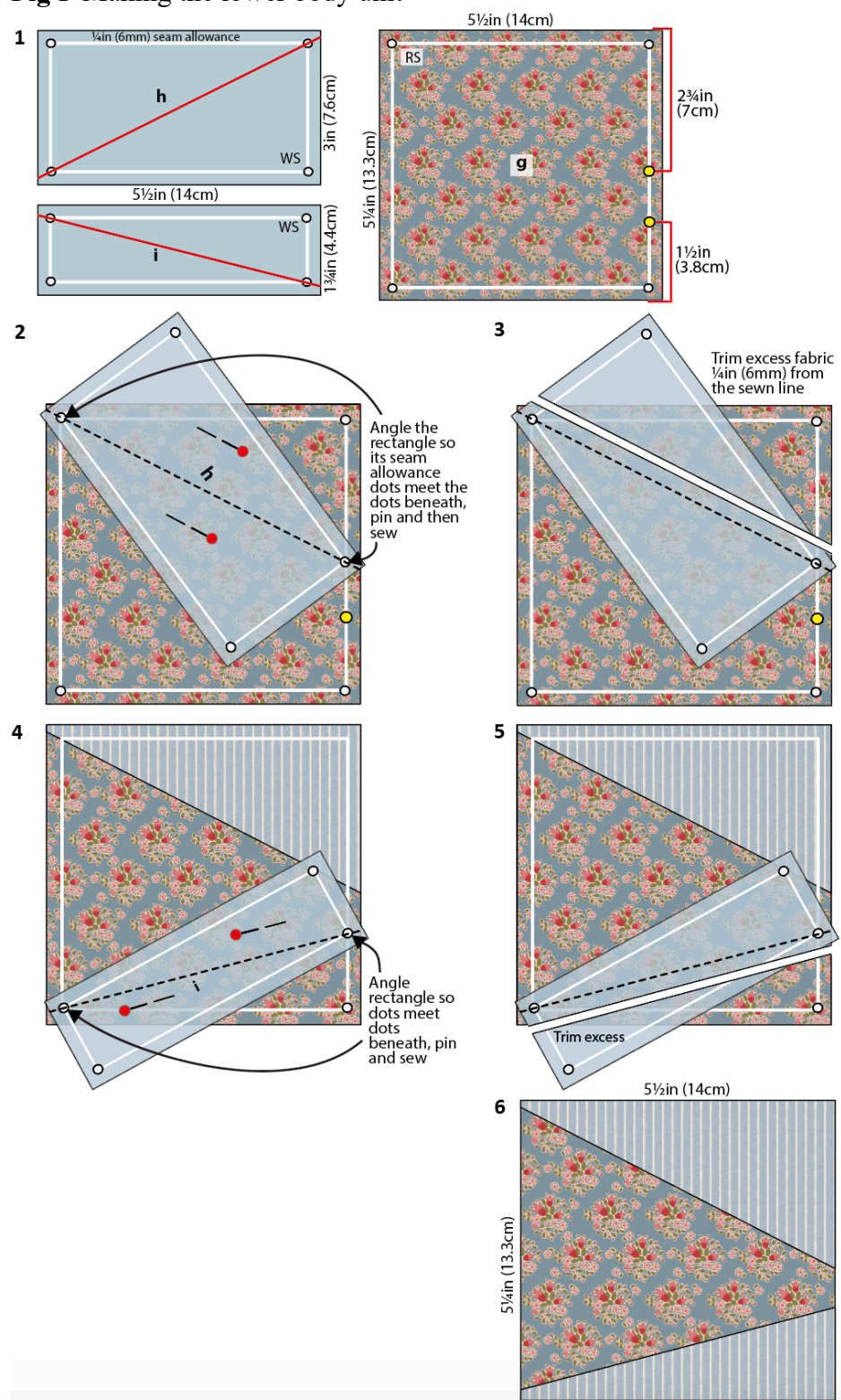
**8 Lower body unit:** Fig F shows the stages of making the lower body unit **g/h/i**. Begin by taking background pieces **h** and **i** and on the wrong side (WS) mark the  $\frac{1}{4}$ in (6mm) seam allowances (these can be pencil lines or just dots at the corners (see Fig F 1). Mark the diagonal lines, as shown, making sure the lines go through the seam allowance dots (and *not* the outer corners of the fabric).

On print fabric piece **g**, on the right side (RS), use a removeable marker to mark the  $\frac{1}{4}$ in (6mm) seam allowance. On the right-hand edge mark dots on the seam allowance (shown in yellow), one  $2\frac{3}{4}$ in (7cm) down from the top edge and one  $1\frac{1}{2}$ in (3.8cm) up from the bottom edge.

**9** Now take background piece **h** and, with right sides together, angle it following Fig F 2, so two of its seam allowance dots meet the dots beneath on the print fabric. Note that the alignment of the dots on the right-hand edge is for the  $2\frac{3}{4}$ in (7cm) dot. Pin in place and then sew along the marked diagonal line. Using a quilting ruler, trim off excess fabric  $\frac{1}{4}$ in (6mm) away from the sewn line, as in Fig F 3. Press the triangle outwards and check that its edges are aligned with the print fabric piece.

**10** Repeat this process with background piece **i**, angling the piece as shown in **Fig F 4**, so two of its seam allowance dots meet the dots beneath on the print fabric. Note that the alignment on the right-hand edge is now for the  $1\frac{1}{2}$ in (3.8cm) dot. Pin in place and then sew along the marked diagonal line. Trim off excess fabric  $\frac{1}{4}$ in (6mm) away from the sewn line, as in **Fig F 5**. Press the triangle outwards and check that its edges are aligned with the print fabric piece. Check the unit's size – it should be  $5\frac{1}{2}$ in x  $5\frac{1}{4}$ in (14cm x 13.3cm) (**Fig F 6**).

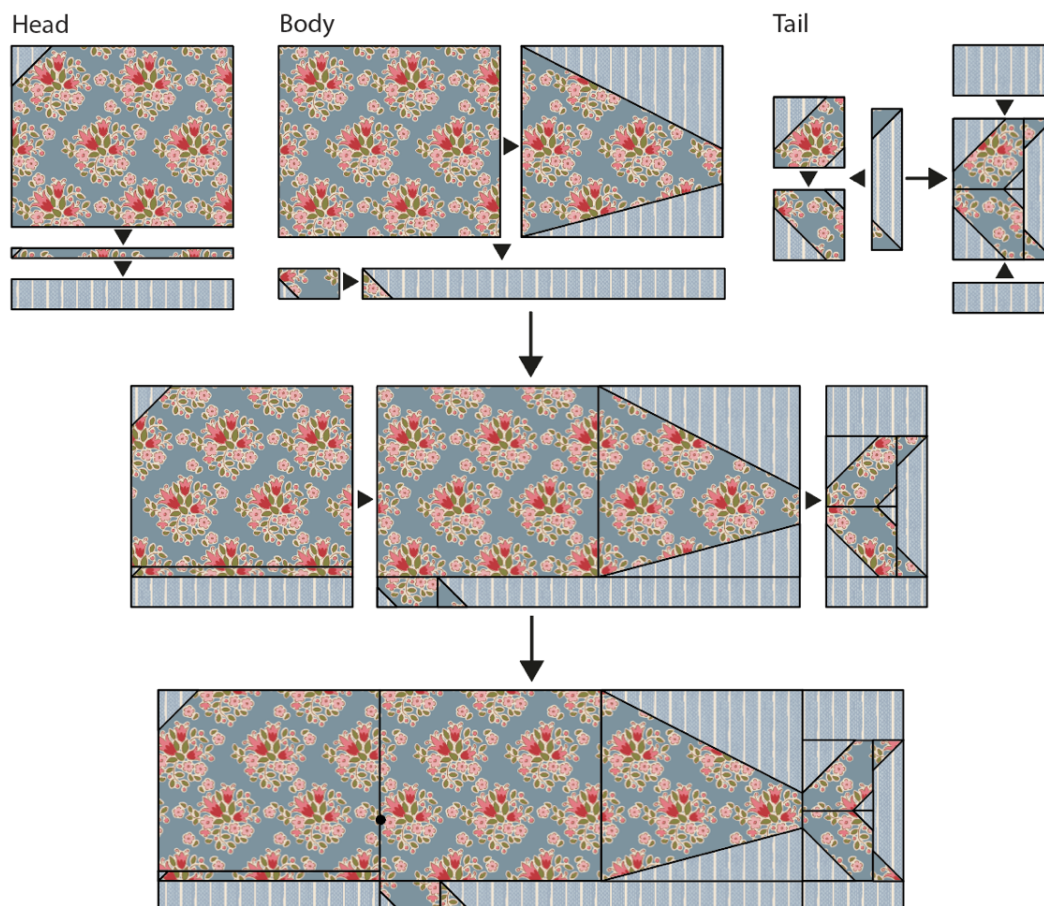
**Fig F** Making the lower body unit



## Assembling the Block

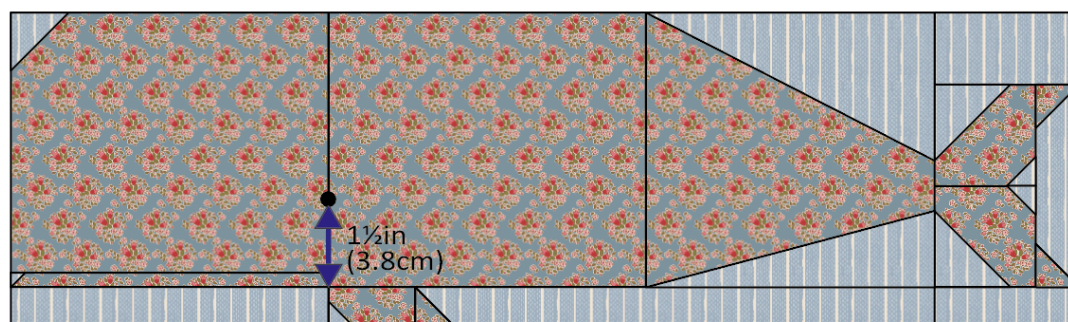
**11** When all of the units for the block have been pieced, the block can be assembled. Start by sewing the sub-units together as in **Fig G**, pressing seams open or to one side. Now sew these larger sections together and press. Check the block is 19in x 6in (48.3cm x 15.2cm).

**Fig G** Assembling the whale block



**12** When the block is assembled, sew the eye on the whale using a French knot with six strands of black stranded cotton wrapped twice around the needle. An eye is positioned on the seam between the head and the body, about 1½in (3.8cm) up from the fin seam, as shown in **Fig H**.

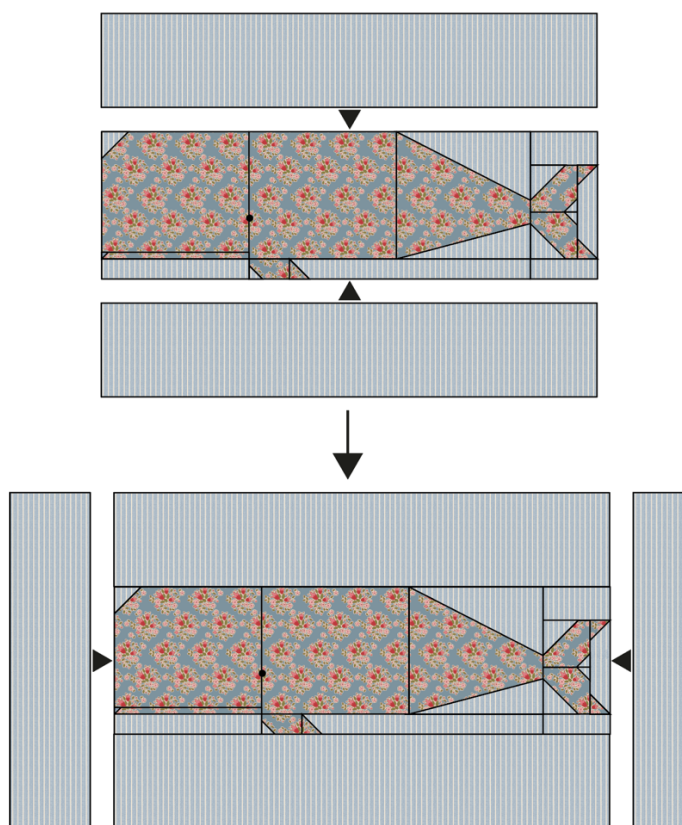
**Fig H** Adding the eyes



## Assembling the Pillow

**13** Sew the longer border strips to the top and bottom of the block and press the seams outwards (**Fig I**). Now add the shorter border strips to the sides of the work, with the slightly wide piece on the left-hand side. Press seams outwards.

**Fig I** Adding the border



## Quilting and Finishing

**14** Make a quilt sandwich of the patchwork, wadding (batting) and lining fabric (if using). Quilt as desired. Trim off excess wadding and lining fabric to match the patchwork size.

**15** To make up the pillow cover, take the two pieces of fabric for the pillow back and on one long edge of each piece, create a hem by turning the edge over by 1in (2.5cm), twice. Sew the seams with matching thread and press (**Fig J**). The diagram is shown in greys, so you can use the Tilda fabric and buttons suggested in the Materials list, or those of your choice.

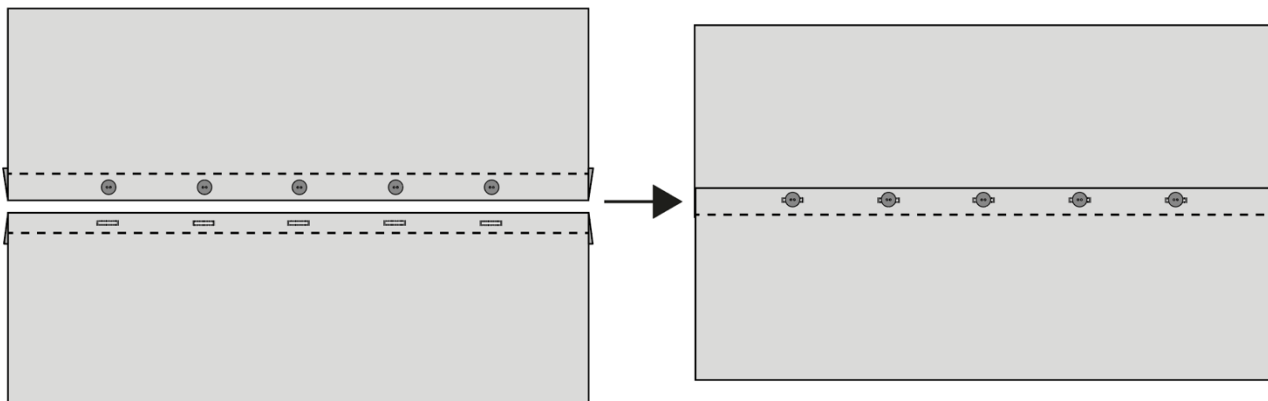
**16** For the fastening, using your sewing machine, create four equally spaced buttonholes within the hem of one of the pieces. Sew four buttons onto the other piece, matching their positions to the buttonholes. Note: Instead of making buttonholes, you could use a hook and loop fastening, such as Velcro to fasten the cover and sew on the buttons as a decorative feature.

**17** The pillow has a bound edge, so the pieces are assembled with right sides out, as follows. On the backing, fasten the buttons into the buttonholes and place the whole piece right side



down. Place the quilted patchwork on top, right side up. Check the wadding/lining is the same size as the patchwork, trimming any raw edges as needed. Make sure the outer edges of all pieces are aligned. Pin or tack (baste) the layers together and then bind as normal. As you sew the binding in place it will fix the other layers together. Press the cover and insert a pillow pad to finish.

**Fig J** Making up the cover



## Whale Pillows (Evie)

The Evie version of the whale pillow has a tiny dot background and a different print fabric for the whale but is made in the same way as Lulu.

Difficulty Rating \*\*

### Materials (Evie Whale)

- Fabric 1:  $\frac{3}{8}$ yd (40cm) – Tiny Dot blue (160067) (background)
- Fabric 2:  $\frac{1}{4}$ yd (25cm) or fat quarter – Evie blue (130133)
- Wadding (batting): 25in x 14in (63.5cm x 35.5cm)
- Lining fabric: 25in x 14in (63.5cm x 35.5cm) (optional)
- Fabric for back of pillow:  $\frac{5}{8}$ yd (60cm) – Frida blue (130132)
- Binding fabric:  $\frac{1}{4}$ yd (25cm) – Carla blue (130134)
- Piecing and quilting threads
- Black stranded cotton (floss) for eye embroidery
- Quilter's ruler, rotary cutter and mat
- Five buttons for back fastening (optional): Sailboat and Ocean Blue 10mm and 12mm (400063)
- Pillow pad to fit cover

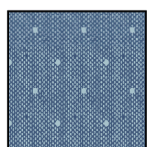
### Finished Size

24in x 13in (61cm x 33cm)

### Pillow Layout

1 The pillow is made up of a single whale block, bordered by fabric strips at the sides, top and bottom. Refer to **Fig A** below for the fabrics used and **Fig B** for the Evie pillow layout.

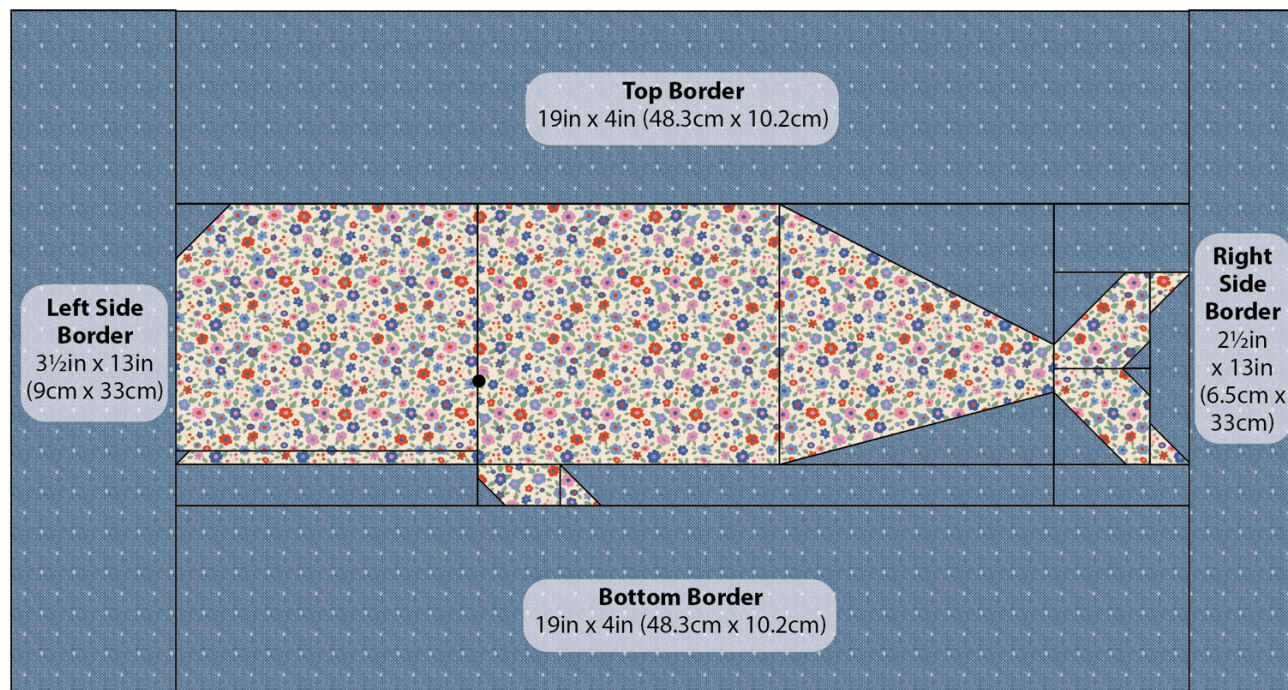
**Fig A** Fabric swatches (Evie Whale Pillow)



**Fabric 1**  
Tiny Dot  
blue  
160067



**Fabric 2**  
Evie  
blue  
130133

**Fig B** Pillow layout (Evie)

## Cutting Out

**2** From Fabric 1 cut the border strips first, as follows (see also, **Fig B**).

- Top and bottom of pillow – two strips 19in x 4in (48.3cm x 10.2cm).
- Sides of pillow – one strip 3 1/2in x 13in (9cm x 33cm) for left-hand side and one strip 2 1/2in x 13in (6.5cm x 33cm) for the right-hand side.

**3** For the block, cut the following pieces from Fabric 1, following **Fig C** for the cut measurements.

**4** For the block, cut the following pieces from Fabric 2, following **Fig C** for the cut measurements.

**5** To cut the fabric for the back of the pillow, remove any selvages and cut the fabric into two pieces each about 25in x 10in (63.5cm x 25.5cm).

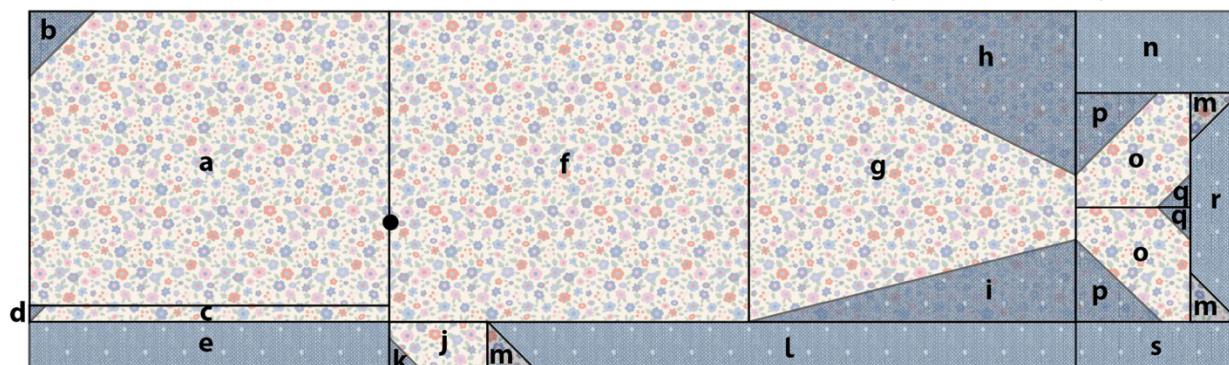
**6** Cut the binding fabric into three strips 2 1/2in (6.4cm) x width of fabric. Sew them together end to end and press seams open. Press in half along the length, wrong sides together.

**Fig C** Cut measurements for the whale block

Sizes include  $\frac{1}{4}$ in (6mm) seam allowances

All pieces to be cut initially as squares or rectangles

**Whale Block:** 19in x 6in (48.3cm x 15.2cm) unfinished



<b>a</b> 6in x 5in (15.2cm x 12.7cm)	<b>h</b> $5\frac{1}{2}$ in x 3in (14cm x 7.6cm)	<b>o</b> $2\frac{1}{4}$ in (5.7cm) square
<b>b</b> $1\frac{1}{2}$ in (3.8cm) square	<b>i</b> $5\frac{1}{2}$ in x $1\frac{1}{4}$ in (14cm x 4.4cm)	<b>p</b> $1\frac{3}{4}$ in (4.4cm) square
<b>c</b> 6in x $\frac{3}{4}$ in (15.2cm x 2cm)	<b>j</b> 2in x $1\frac{1}{4}$ in (5.1cm x 3.2cm)	<b>q</b> 1in (2.5cm) square
<b>d</b> $\frac{3}{4}$ in (2cm) square	<b>k</b> 1in (2.5cm) square	<b>r</b> $1\frac{1}{4}$ in x 4in (3.2cm x 10.2cm)
<b>e</b> 6in x $1\frac{1}{4}$ in (15.2cm x 3.2cm)	<b>l</b> $9\frac{1}{2}$ in x $1\frac{1}{4}$ in (24.1cm x 3.2cm)	<b>s</b> 3in x $1\frac{1}{4}$ in (7.6cm x 3.2cm)
<b>f</b> 6in x $5\frac{1}{4}$ in (15.2cm x 13.3cm)	<b>m</b> $1\frac{1}{4}$ in (3.2cm) square	
<b>g</b> $5\frac{1}{2}$ in x $5\frac{1}{4}$ in (14cm x 13.3cm)	<b>n</b> 3in x $1\frac{3}{4}$ in (7.6cm x 4.4cm)	<b>Eye</b> French knot (see instructions)

**Making the Pillow**

7 Follow Steps 7–17 of the Lulu Pillow, for making the block, adding the border and making up the pillow cover. Use the Lulu diagrams (**Figs D to J**) but using the Evie fabrics.

Tilda®  
FABRICS