

Tilda®

Creating Memories
AUTUMN

Pumpkins



Pumpkin

A deliciously rounded pumpkin is easy to make and a good companion to a butternut squash, especially if made using the Creating Memories fabrics in the Autumn and Thanksgiving colours. Patterns are provided for three sizes of pumpkin, small, medium and large, with the large size described in detail here. The medium and small sizes will need slightly smaller pieces of fabric, so use the patterns as a guide.

Materials (for large pumpkin)

- Eight fabrics for the pumpkin, each 4in x 13in (10.2cm x 33cm)
- One fabric for the stalk 7½in x 5in (19cm x 12.7cm)
- Toy stuffing (fibrefill)
- Wooden stick for stuffing
- Doll needle
- Embroidery yarn

Finished sizes of the pumpkins (approximate)

Small: 6in x 5in (15cm x 13cm)

Medium: 6¾in x 6in (17cm x 15cm)

Large: 6¾in x 7½in (17cm x 19cm)

General Notes

- Read all the project instructions through before you start.
- Use thick paper for copying patterns, ensuring the patterns are full size.
- On the patterns, the solid line is the sewing line. This allows you to add your own seam allowance.
- When sewing the seams, reduce your stitch length to 1.5mm–1.6mm.
- To get a good shape, cut snips in the seam allowance where a seam curves tightly inwards.
- After turning, pull the wooden stick along the inside of the seam to make sure you press out all the creases and folds before ironing.
- Stuff well, using a stick to fill small areas.
- Sew up gaps with matching thread and small slipstitches.

Making a Pumpkin

1 Copy the full size pattern pieces onto thick paper and cut out the shapes. Take the eight fabrics for pumpkin and trace one whole pumpkin shape on each fabric. Cut out the shapes adding a ¼in (6mm) seam allowance before you cut.

2 Take the eight sections and arrange them in the order you like. Take the first two sections and place them right sides together (**Fig A**). Sew a seam down the long side, starting and stopping at the points of the marked shape. Repeat with the other three pairs.

3 Now sew the pairs together, starting and stopping at the ends of the sewn seams. On the final seam, leave a gap in the straight section for turning through. Turn the pumpkin through to the right side and stuff well. Hand sew up the gap (**Fig B**).

Fig A

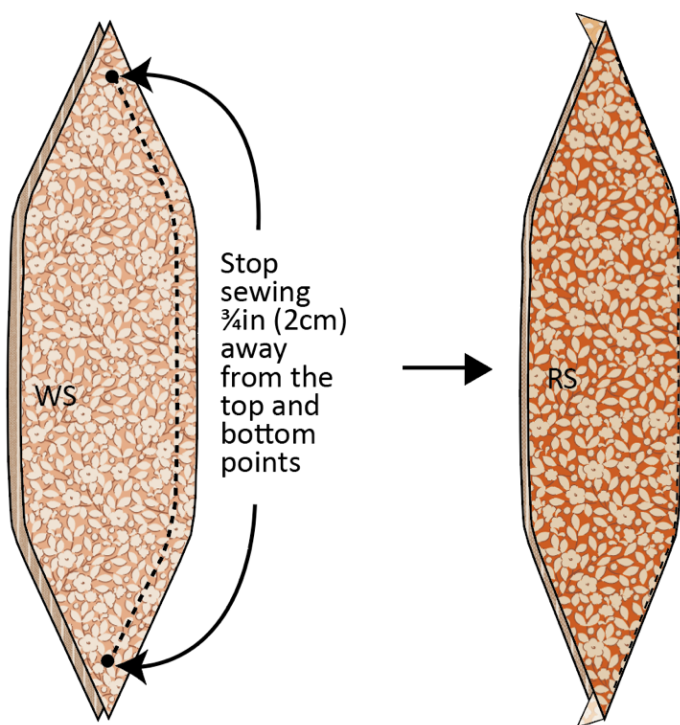
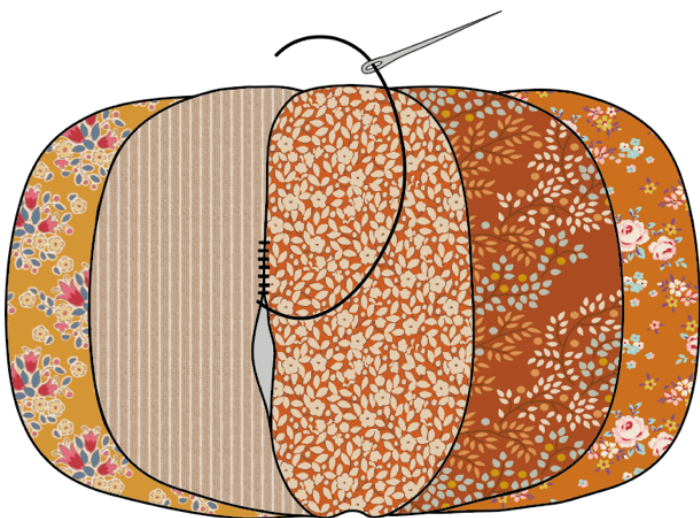


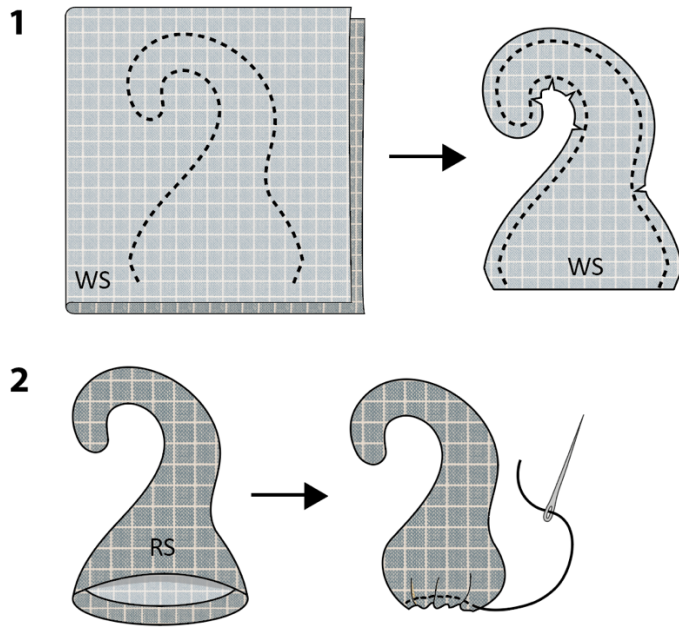
Fig B



4 To turn the ball into a pumpkin shape, thread the doll needle with the embroidery yarn. Tie a large knot in the end. Pass the needle through the top of the pumpkin, down and out at the bottom and then back up again. Pull really firmly on the thread to create a squashed shape and an indentation at the top and bottom, and then tie off securely.

5 To make the stalk, take the piece of fabric and fold and press it in half, right sides together (**Fig C 1**). Mark the stalk pattern and sew the shape, as shown, using a smaller stitch length of about 1.6. Cut out with a small seam allowance and snip notches in the inward curves, as shown. Turn through to the right side, turn the extra seam allowance under and press in place (**Fig C 2**). Stuff the stalk with the help of a wooden stick. Sew around the opening and pull up the thread to form a gathered neck.

Fig C



6 Squeeze the bottom of the stalk against the dent in the top of the pumpkin and create a round shape using pins, as shown in **Fig D**. Now hand sew the stalk to the pumpkin to finish.

Fig D



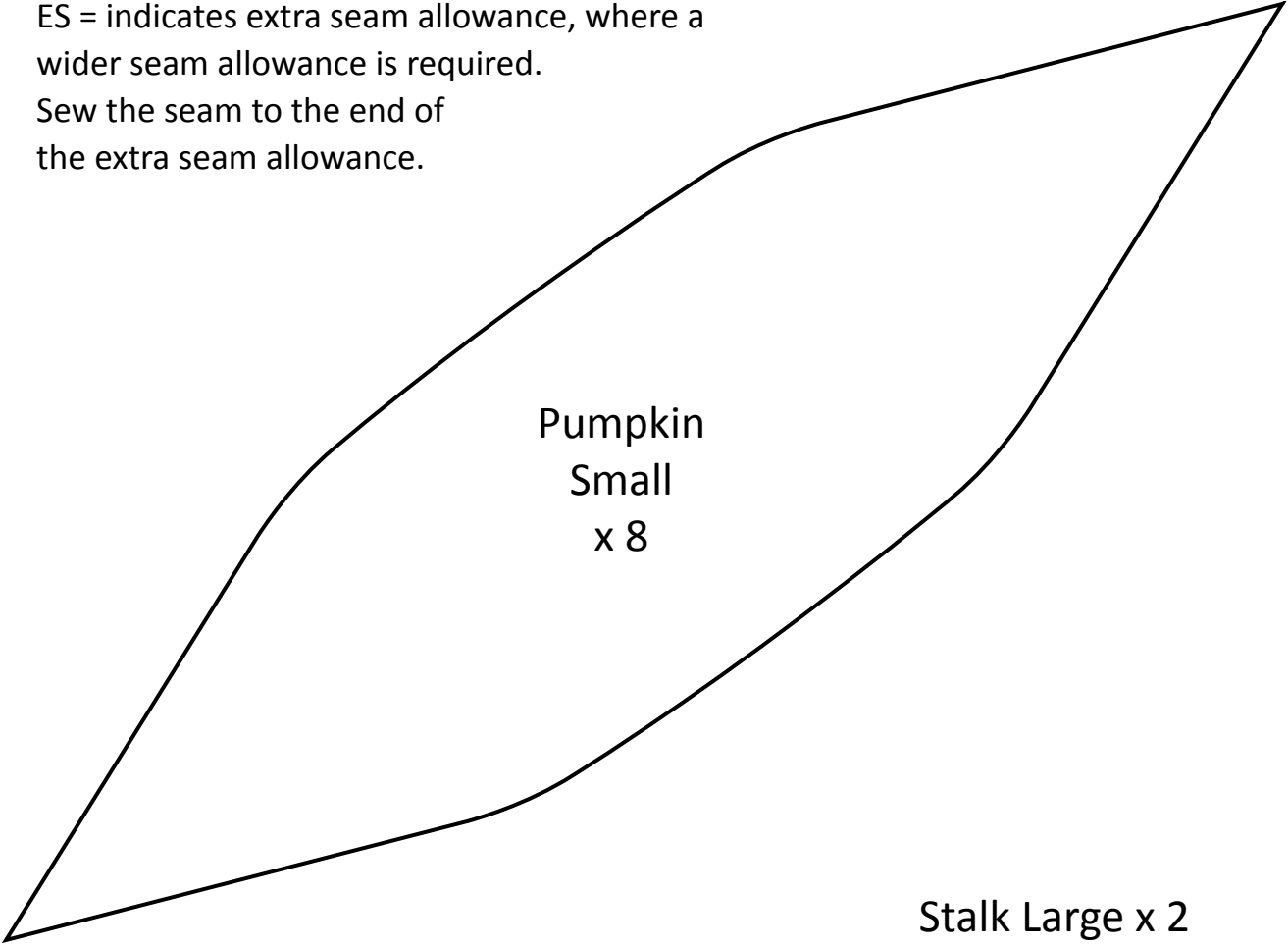
Pumpkin Patterns

Full size

The solid line is the sewing line.

ES = indicates extra seam allowance, where a wider seam allowance is required.

Sew the seam to the end of the extra seam allowance.

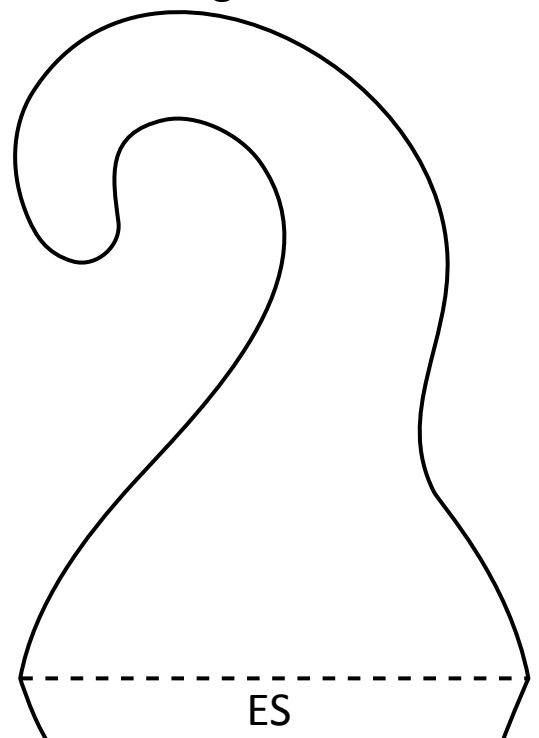
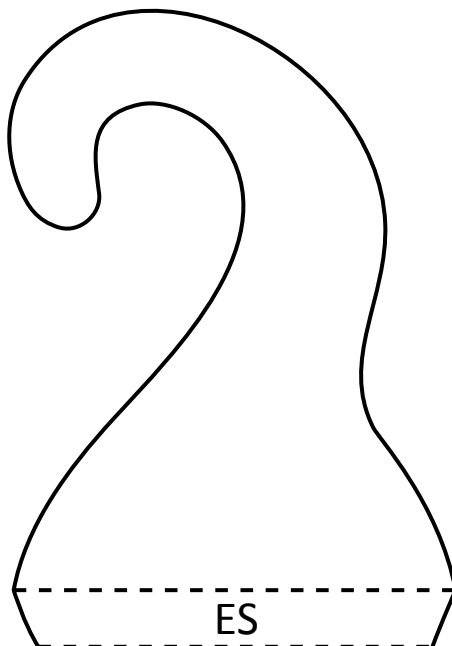
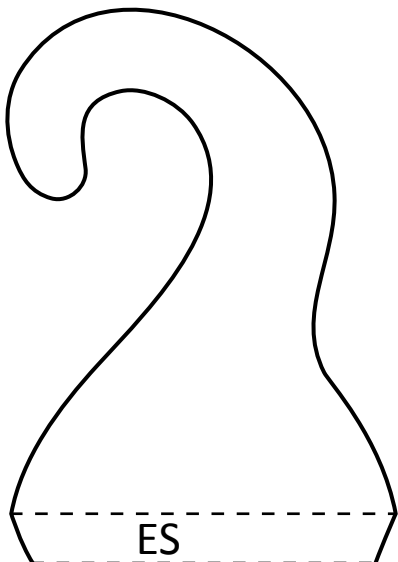


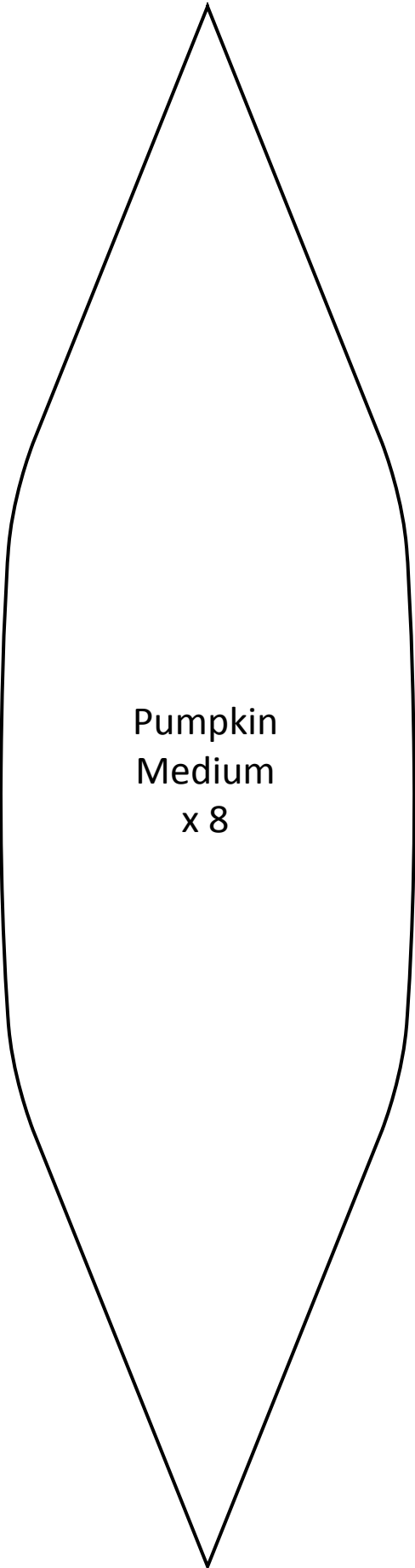
Pumpkin
Small
x 8

Stalk Large x 2

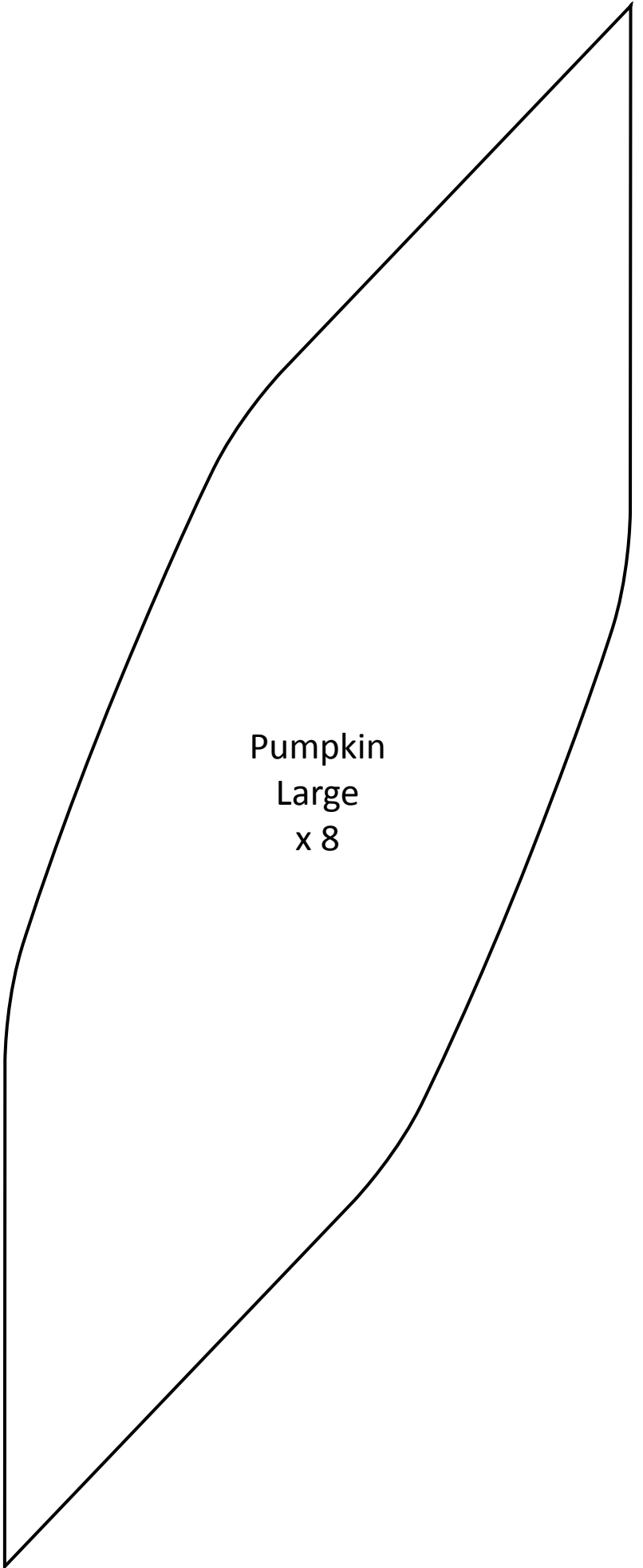
Stalk Medium x 2

Stalk Small x 2





Pumpkin
Medium
x 8



Pumpkin
Large
x 8