

Tilda®

Creating Memories
SPRING

Egg Pillow



Easter Egg Pillow

Three yummy Easter eggs are used to decorate this pillow, making it perfect for spring and Easter celebrations. The curved sewing required is well explained, so fear not! The lovely spring colours of the Creating Memories fabric collection match those of the Easter Egg Quilt and for this pillow are accompanied by a Chambray background in a delicate olive colour. For the free quilt pattern see tildasworld.com.

Difficulty Rating ***

Materials

- Fabric 1: ½yd (50cm) – Chambray olive (160012) (background)
- Fabric 2: about 5in (12.7cm) square – Gracie yellow (130117)
- Fabric 3: about 5in (12.7cm) square – Carla pink (130118)
- Fabric 4: about 5in (12.7cm) square – Avery yellow (130120)
- Fabric 5: about 5in (12.7cm) square – Brie green (130121)
- Fabric 6: about 5in (12.7cm) square – Harper yellow (130122)
- Fabric 7: about 5in (12.7cm) square – Lulu yellow (130123)
- Fabric 8: about 5in (12.7cm) square – Frida pearl (130124)
- Fabric 9: about 5in (12.7cm) square – Evie dove white (130125)
- Fabric 10: about 5in (12.7cm) square – Seamstripe teal (160060)
- Fabric 11: about 5in (12.7cm) square – Tiny Stripe pink (160063)
- Fabric 12: about 5in (12.7cm) square – Polka Dot yellow (160064)
- Fabric 13: about 5in (12.7cm) square – Gingham yellow (160065)
- Wadding (batting): 32in x 15in (81.3cm x 38cm)
- Lining fabric: 32in x 15in (81.3cm x 38cm) (optional)
- Fabric for back of pillow: ⅝yd (60cm) – Frida lime (130119)
- Binding fabric: ¼yd (25cm) – Frida lime (130119)
- Piecing and quilting threads
- Quilter's ruler, rotary cutter and mat
- Thick paper or thin card to cut pattern shapes
- Pack of Creating Memories Buttons in Spring and Easter Pastels 10mm and 12mm (400062)
- Pillow pad to fit cover

Finished Size

29½in x 12½in (75cm x 31.8cm)

Fabric Notes

The Chambray fabric can be cut in any direction for the most economical use of the fabric.

General Notes

- Fabric quantities are based on a usable width of 42in (107cm), unless otherwise stated.
- Measurements are in imperial inches with metric conversions in brackets – use only *one* system throughout (preferably inches). Width measurements are generally given first.
- Press fabric before cutting and trim as needed to square up the fabric pattern/weave, using a quilting ruler to cut the top raw edge at 90 degrees to the selvages.

- Use ¼in (6mm) seams unless otherwise instructed.
- Read all the instructions through before you start.
- Always make one complete block as a test before going on to make the remaining blocks.

Pillow Layout

1 The pillow is made up of three Easter Egg blocks, with a border at each side of the pillow and at the top and bottom.

Patterns are needed to make the Easter Egg blocks – Patterns A, B, C and D are supplied full size, with ¼in (6mm) seam allowances included. To create Patterns A Reversed, B Reversed, C Reversed and D Reversed, simply flip the A, B, C, D patterns over to reverse the shapes (mirror images). Print out the patterns and cut out the shapes from thick paper or thin card. See **Fig A** for the fabrics used, **Fig B** for the pillow layout and **Fig C** for a diagram of how the patterns create the egg shape.

Fig A Fabric swatches (Easter Egg Pillow)



Fig B Pillow layout

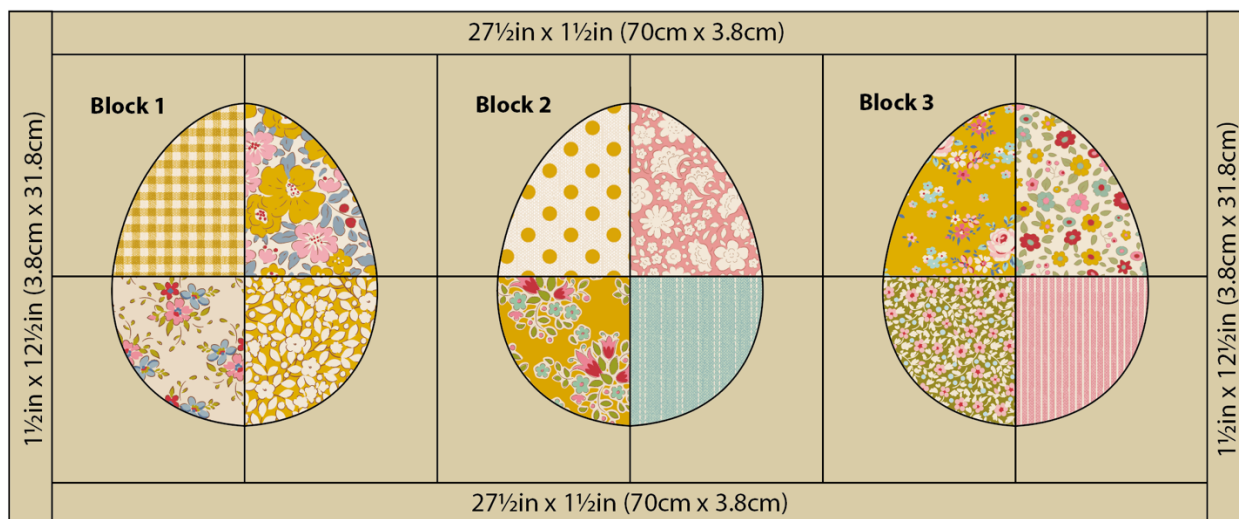
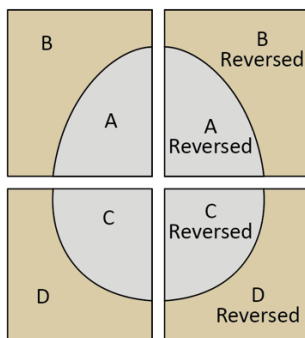


Fig C Patterns required to make the egg shape



Cutting Out

2 From Fabric 1 cut the border strips first, cutting the following pieces (as in **Fig B**).

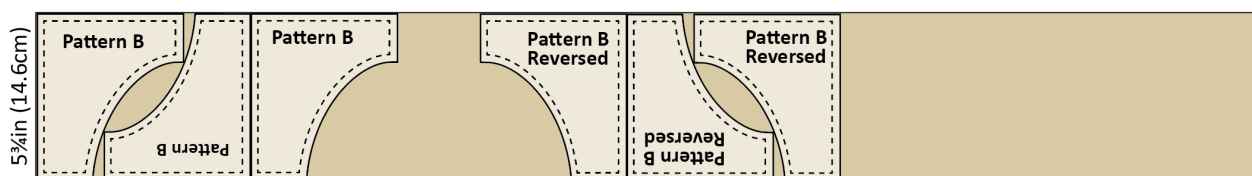
- Top and bottom borders – two strips $27\frac{1}{2}$ in x $1\frac{1}{2}$ in (70cm x 3.8cm).
- Side borders – two strips $1\frac{1}{2}$ in x $12\frac{1}{2}$ in (3.8cm x 31.8cm).

3 Cut the Fabric 1 background pieces for the blocks as shown in **Fig D**, using the patterns to cut the shapes. Note that the suggested depth of the strip is $5\frac{3}{4}$ in (14.6cm) for Pattern B and B reversed, and $5\frac{1}{2}$ in (14cm) for Pattern D and D Reversed, which is enough depth to contain the patterns. You could allow a little more depth if you wish. Place the pattern on the fabric, draw around the shape and cut out. Place the pattern back on top briefly, to check that you have cut the shape exactly.

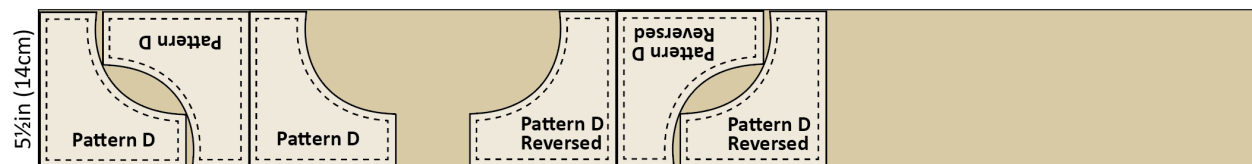
- Cut three using Pattern B.
- Cut three using Pattern B Reversed.
- Cut three using Pattern D.
- Cut three using Pattern D Reversed.

Fig D Cutting Fabric 1 for the blocks

Pattern B and B Reversed – 3 of each required



Pattern D and D Reversed – 3 of each required



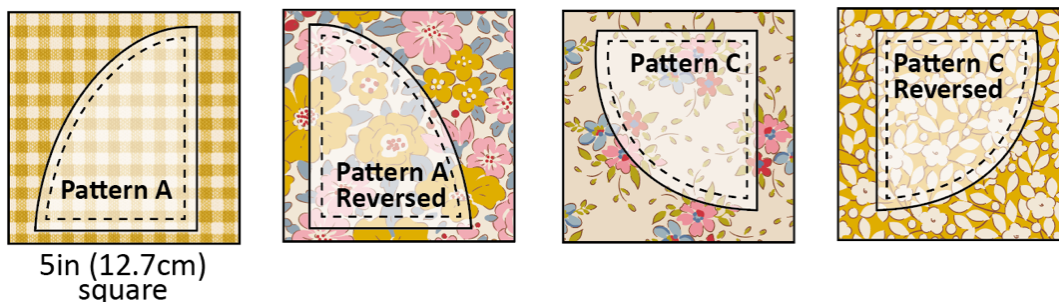
4 For the print fabrics, use Patterns A, A Reversed, C and C Reversed. Each of the patterns will fit on a 5in (12.7cm) square of fabric. As an example, **Fig E** shows the shapes needed for Block 1. Cut the following shapes.

- Cut one using Pattern A in Fabrics 2, 12 and 13.
- Cut one using Pattern A Reversed in Fabrics 3, 6 and 9.

- Cut one using Pattern C in Fabrics 5, 7 and 8.
- Cut one using Pattern C Reversed in Fabrics 4, 10 and 11.

Fig E Cutting the print fabrics for the blocks

Block 1 shown as an example



5 Cut the fabric for the back of the pillow into two pieces each about 30in x 10in (76cm x 25.5cm).

6 Cut the binding fabric into three 2½in (6.4cm) x width of fabric strips. Sew the strips together end to end and press seams open. Press the binding in half along the length, wrong sides together.

Making the Blocks

7 An Easter Egg block is made up of eight shapes (see **Fig C**), with the left half of the egg a mirror image of the right half. Four print fabrics are used for an egg, with Fabric 1 as the background pieces. You will see as you used the patterns to cut the fabrics that the units for the top of the egg are slightly different sizes to the units for the bottom of the egg. Place the shapes for Block 1 roughly in the egg layout, to be sure you are sewing the correct shapes together. **Fig F** shows the process for sewing Patterns A and B together using a curved seam. The same technique is used for sewing Patterns A Reversed and B Reversed together, and then Patterns C and D and finally Patterns C Reversed and D Reversed.

8 Take the Pattern A and B fabric shapes and mark or crease the centre points on the curves of both shapes (**Fig F 1**).

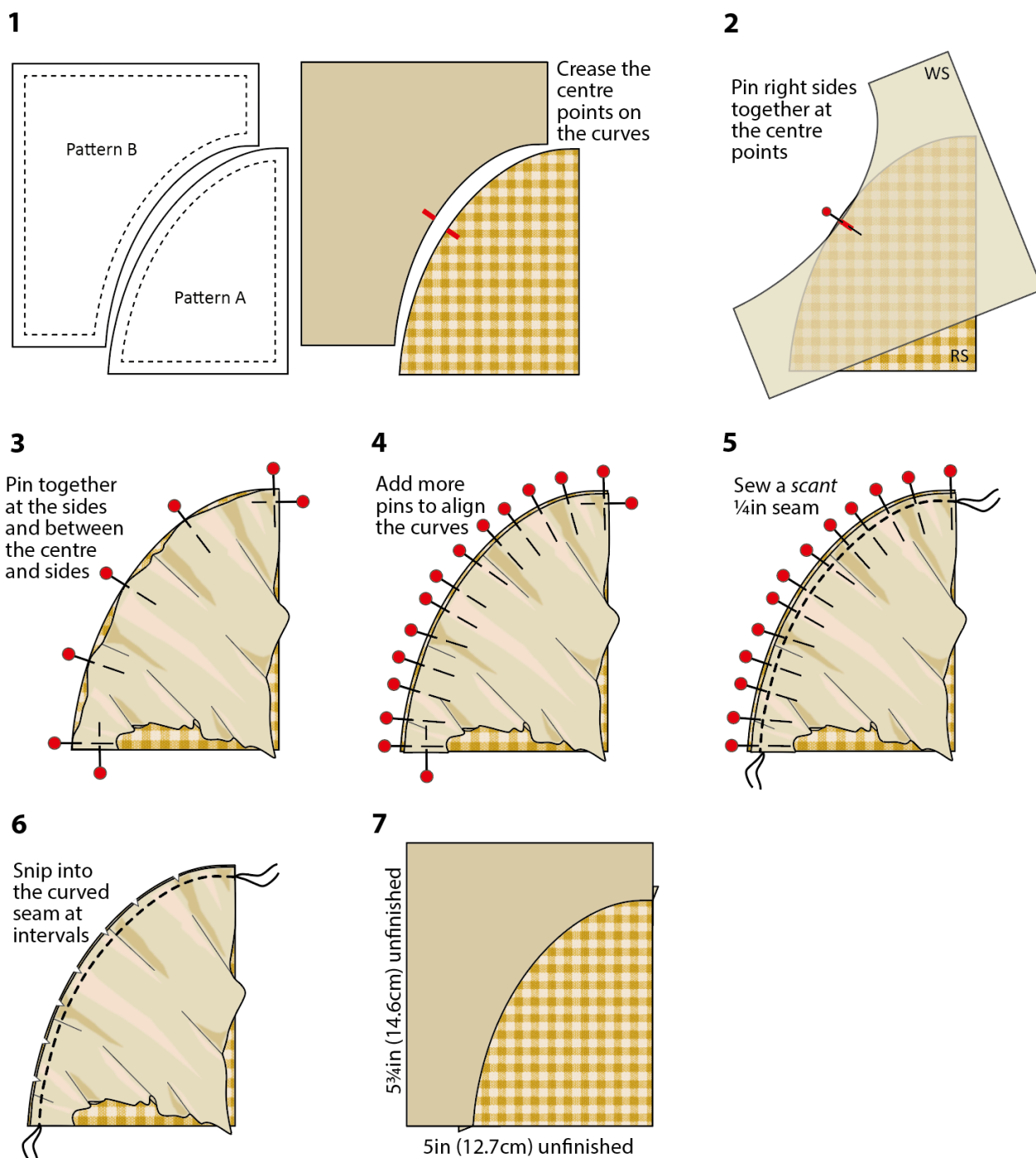
9 Place the pieces right sides together aligning the centre marks and pin (**Fig F 2**). Align the outer edges and pin, and then pin in between (**Fig F 3**). Check that the short straight edge of piece B is aligned with the straight edge of piece A, pinning at these places too.

10 Ease the remaining areas of curved edges together and pin, adding as many pins as needed to ensure that the curves match well (**Fig F 4**). You may need to pull slightly to ease the fabric edges into place. Once pinned, check that there are no pleats or tucks formed on the back of the work.

11 Now sew the seam using a *scant* ¼in (5mm) seam (**Fig F 5**). A scant seam is one or two needle's width narrower than a normal seam. If you've placed the pins as shown, you should be able to sew over them, leaving them in place until the seam is sewn. Sew slowly and check that no pleats or folds are forming in the fabric pieces. Snip into the seam allowance at intervals using sharp-pointed scissors, with cuts about ⅛in (3mm) long (**Fig F 6**).

12 Press the seam outwards, using the nose of the iron to make sure the seam is pressed fully and smooth (**Fig F 7**). Take care not to distort the edges of the unit. Check the unfinished size of the unit is correct – for the A+B unit this is 5in x 5³/₄in (12.7cm x 14.6cm).

Fig F Sewing a curved seam
Pattern A and B shown for Block 1



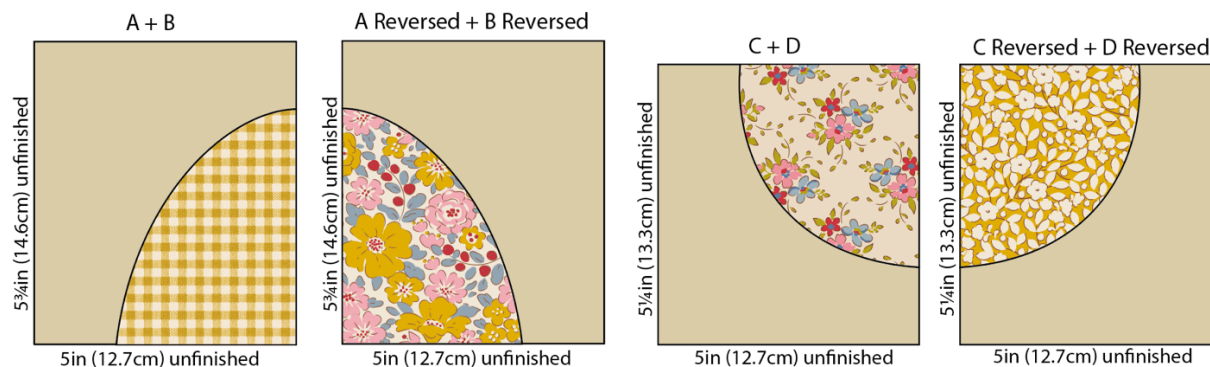
13 Use the same curved technique to sew Patterns A Reversed and B Reversed together. This unit should also be 5in x 5³/₄in (12.7cm x 14.6cm) – see **Fig G**.

14 Use the same curved technique to sew Patterns C and D together. Once sewn, this unit should be 5in x 5¹/₄in (12.7cm x 13.3cm) (slightly shorter than the A/B units) – see **Fig G**.

15 Use the same curved technique to sew Patterns C Reversed and D Reversed together. Once sewn, this unit should be 5in x 5¼in (12.7cm x 13.3cm) (slightly shorter than the A/B units) – see **Fig G**.

Fig G Sizes of the units for an Easter Egg block

Block 1 shown

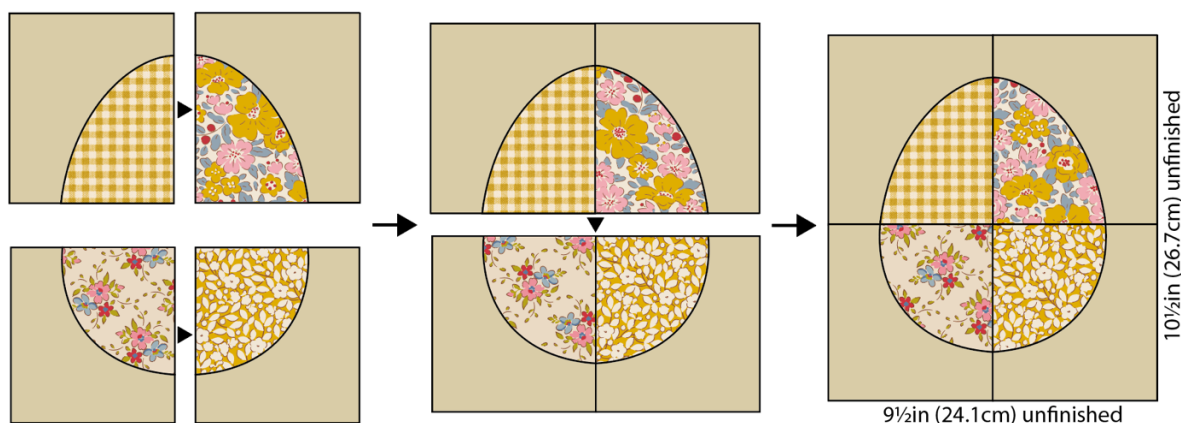


16 When the four units have been sewn, assemble the egg by following **Fig H**, sewing the top units together using a normal ¼in (6mm) seam and matching the curved seams neatly. Press the seam open. Sew the bottom units together in the same way. Now sew the halves together, matching the centre seam and the curves neatly. Press the seam open. Check the block is 9½in x 10½in (24.1cm x 26.7cm).

17 Repeat the block-making process to make one of Block 2 and one of Block 3.

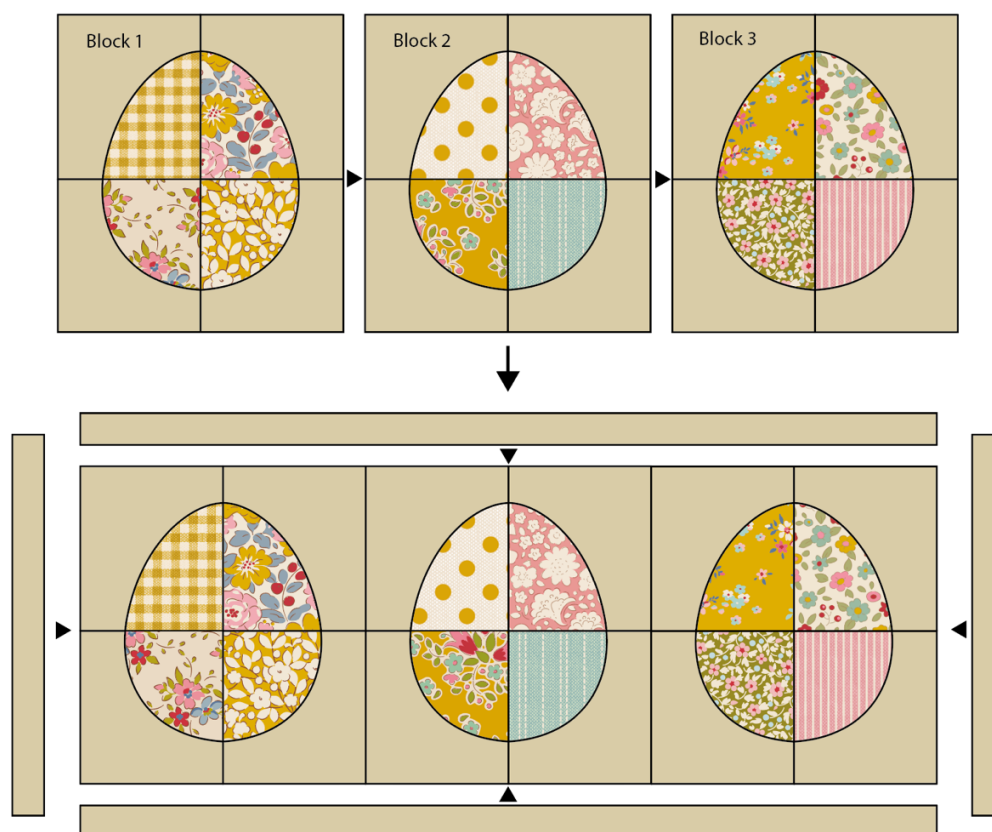
Fig H Assembling an Easter Egg block

Block 1 shown



Assembling the Pillow

18 To complete the patchwork, sew the blocks together in a row as in **Fig I**. Add the top and bottom borders to the patchwork, pressing seams out towards the border strips. Now add the side borders and press seams outwards.

Fig I Assembling the patchwork

Quilting and Finishing

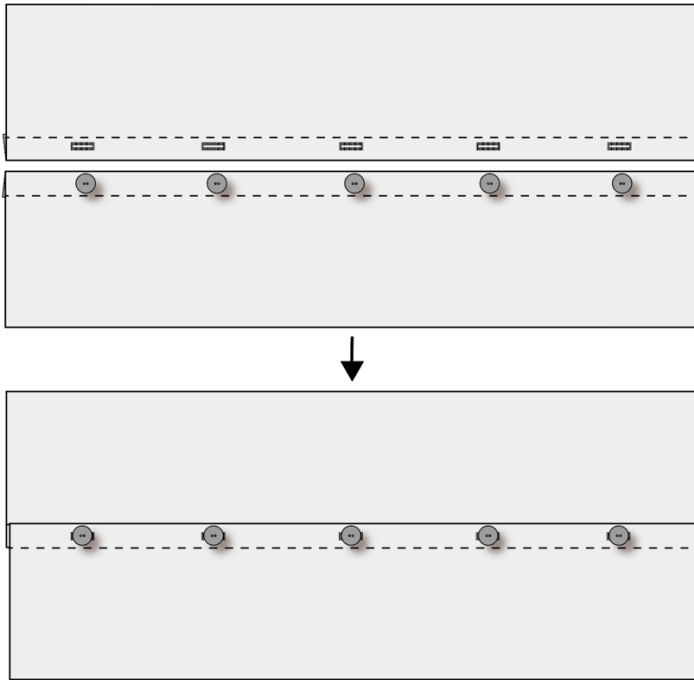
19 Make a quilt sandwich of the patchwork, wadding (batting) and lining fabric (if using). Quilt as desired. Trim off excess wadding and lining fabric to match the patchwork size.

20 To make up the pillow cover, take the two pieces of fabric for the cushion back and on one long edge of each piece, create a hem by turning the edge over by 1 in (2.5cm), twice. Sew the seams with matching thread and press (**Fig J**). The diagram is shown in greys, so you can use the Tilda fabric and buttons suggested in the Materials list, or those of your choice.

21 For the fastening, using your sewing machine, create five equally spaced buttonholes within the hem of one of the pieces. Sew five buttons onto the other piece, matching their positions to the buttonholes. Note: Instead of making buttonholes, you could use a hook and loop fastening, such as Velcro, to fasten the cover and sew on the buttons as a decorative feature.

22 The pillow has a bound edge, so the pieces are assembled with right sides out, as follows. On the backing, fasten the buttons into the buttonholes and place the whole piece right side down. Place the quilted patchwork on top, right side up. Make sure the outer edges of all pieces are aligned, trimming the back piece if needed. Pin or tack (baste) the layers together and then bind as normal. As you sew the binding in place it will fix the other layers together. Press the cover and insert a pillow pad to finish.

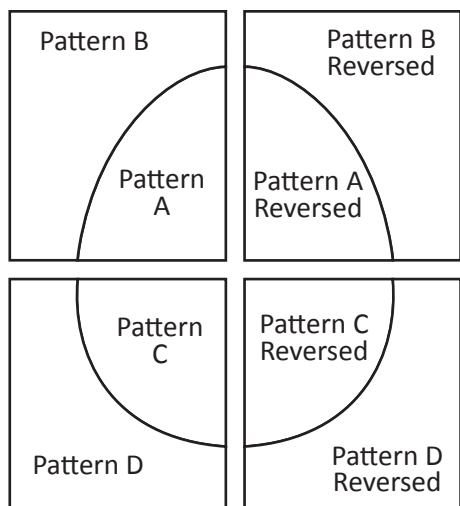
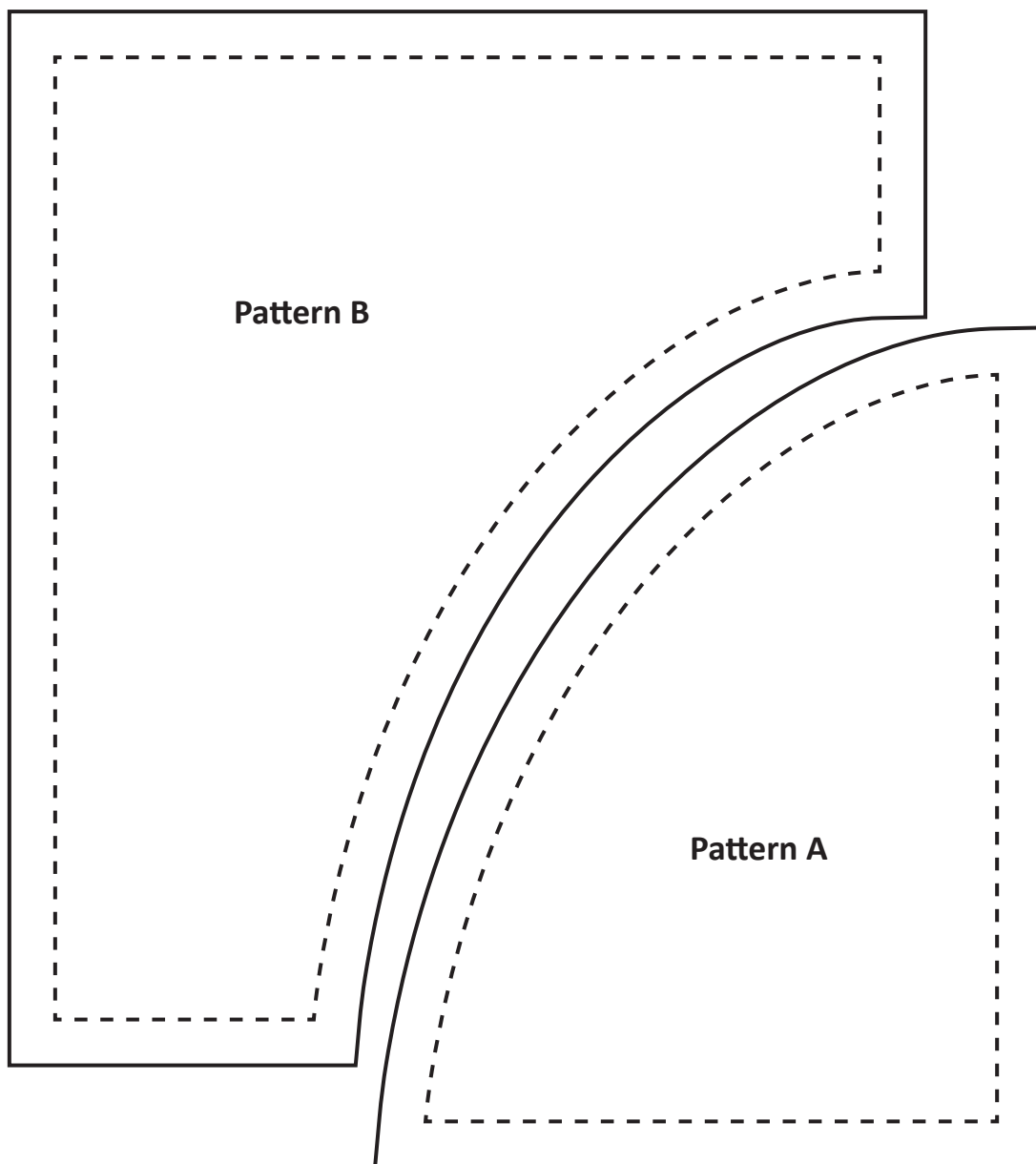
Fig J Making up the cover



Easter Egg Quilt and Pillow – Patterns A and B

Actual size with ¼in (6mm) seam allowances included

Reflect (flip) the patterns vertically for Pattern A Reversed and Pattern B Reversed



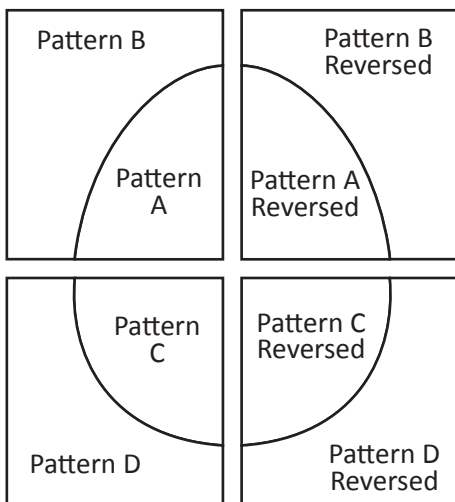
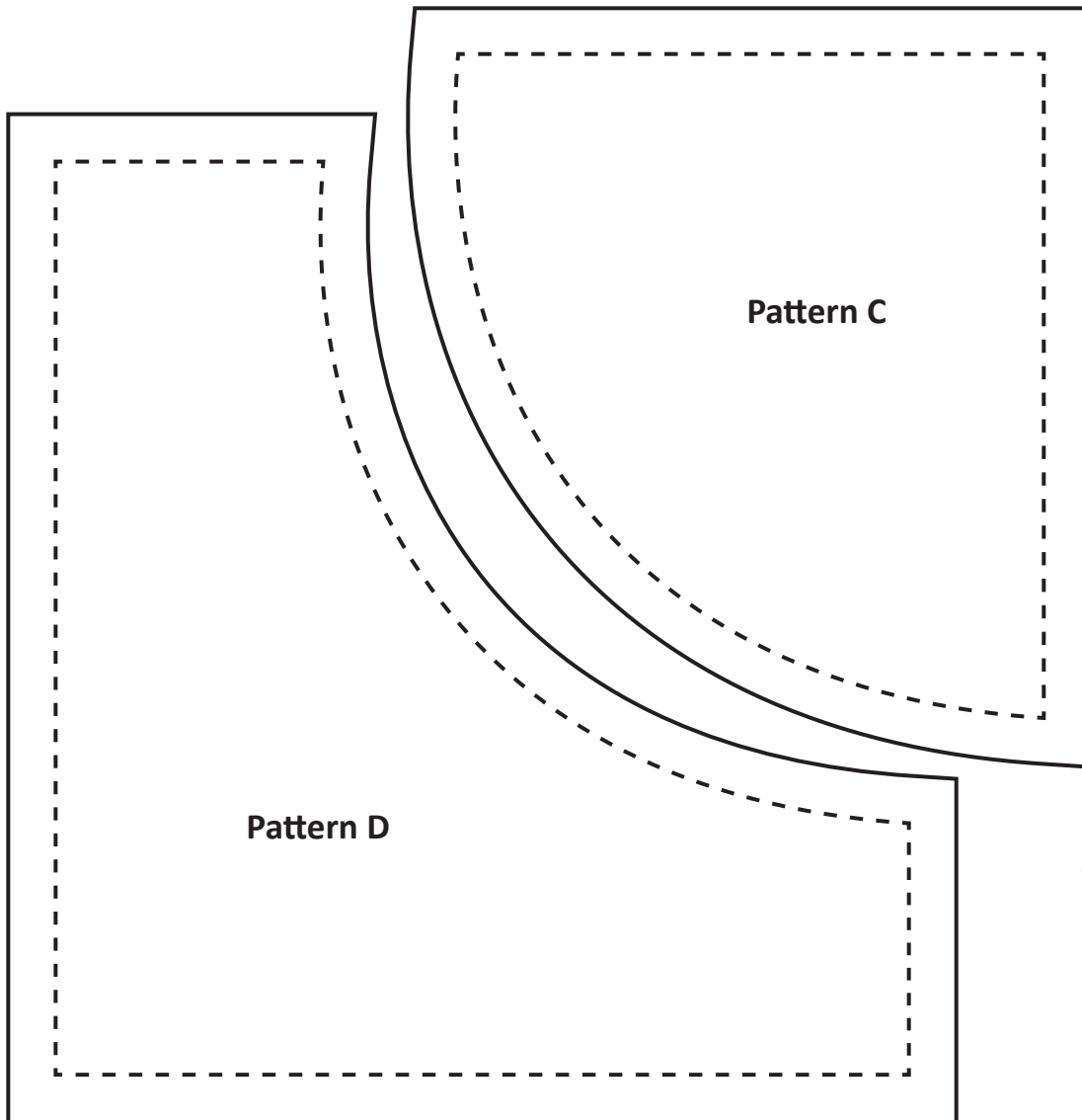
Please check this ruler to ensure that you are printing in 100%. Pages are made in A4.



Easter Egg Quilt and Pillow – Patterns C and D

Actual size with ¼in (6mm) seam allowances included

Reflect (flip) the patterns vertically for Pattern C Reversed and Pattern D Reversed



Please check this ruler to ensure that you are printing in 100%. Pages are made in A4.

